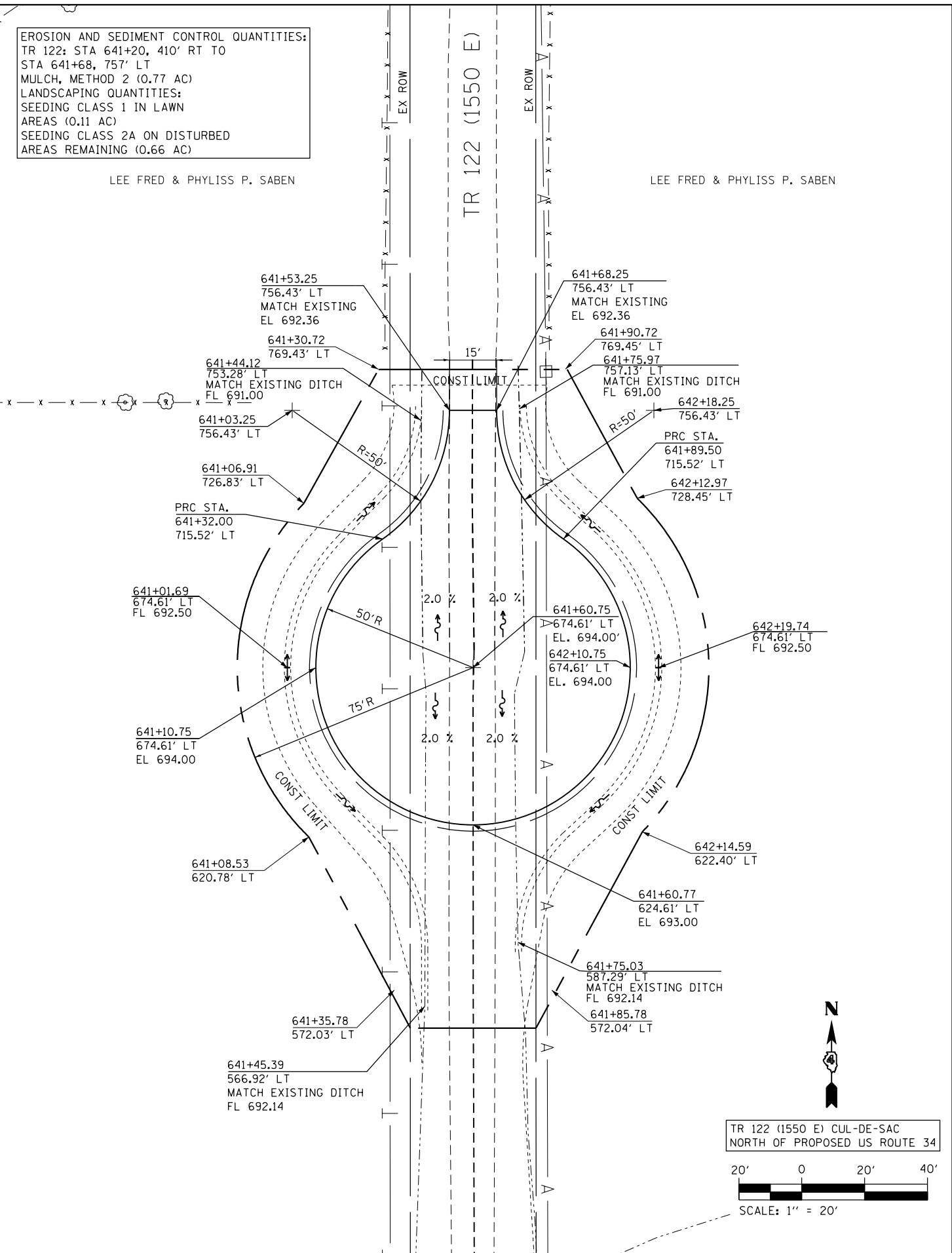


(A) STONE RIPRAP CLASS B4  
 L20' X W10' (AVE)  
 (B) STONE RIPRAP CLASS B4  
 L20' X W20'  
 641+53.98  
 400.00' RT  
 MATCH EXISTING  
 EL 702.15

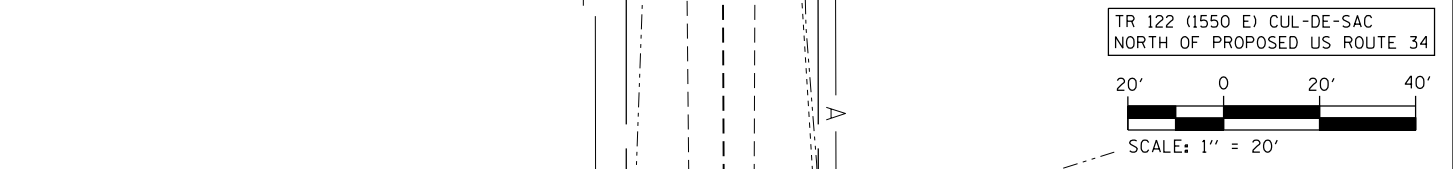
FILE NAME = D468409-SHT-05-INTERSEC-TR122.dgn	USER NAME = zach1	DESIGNED - DBS	REVISED -
		DRAWN - PSBA	REVISED -
		CHECKED - CSB	REVISED -
		DATE - 10/2012	REVISED -



EROSION AND SEDIMENT CONTROL QUANTITIES:  
 TR 122: STA 641+20, 410' RT TO  
 STA 641+68, 757' LT  
 MULCH, METHOD 2 (0.77 AC)  
 LANDSCAPING QUANTITIES:  
 SEEDING CLASS 1 IN LAWN  
 AREAS (0.11 AC)  
 SEEDING CLASS 2A ON DISTURBED  
 AREAS REMAINING (0.66 AC)

LEE FRED & PHYLISS P. SABEN

LEE FRED & PHYLISS P. SABEN



STATE OF ILLINOIS DEPARTMENT OF TRANSPORTATION		INTERSECTION DETAILS TR 122 (1550 E) CUL-DE-SAC	
SCALE: 1" = 20'	SHEET NO. 5 OF 21 SHEETS	STA. TO STA.	

F.A.P. R.T.E. 313	SECTION 7-2 ; 6-1	COUNTY HENDERSON	TOTAL SHEETS 976	SHEET NO. 372
CONTRACT NO. 68409				
ILLINOIS FED. AID PROJECT				