

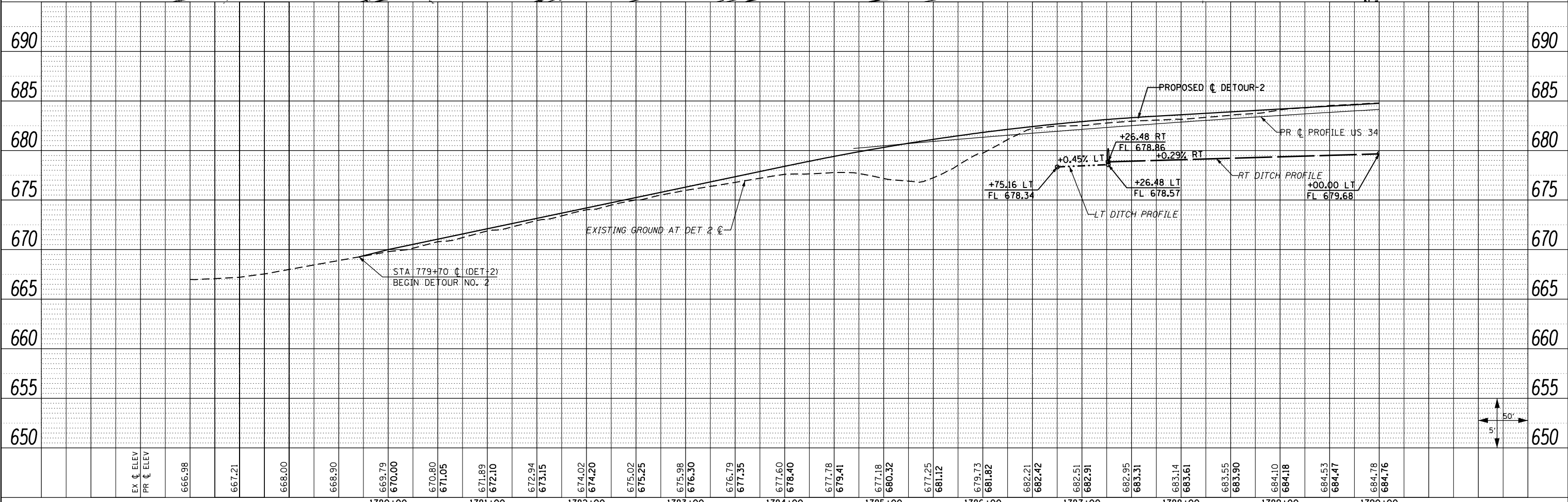
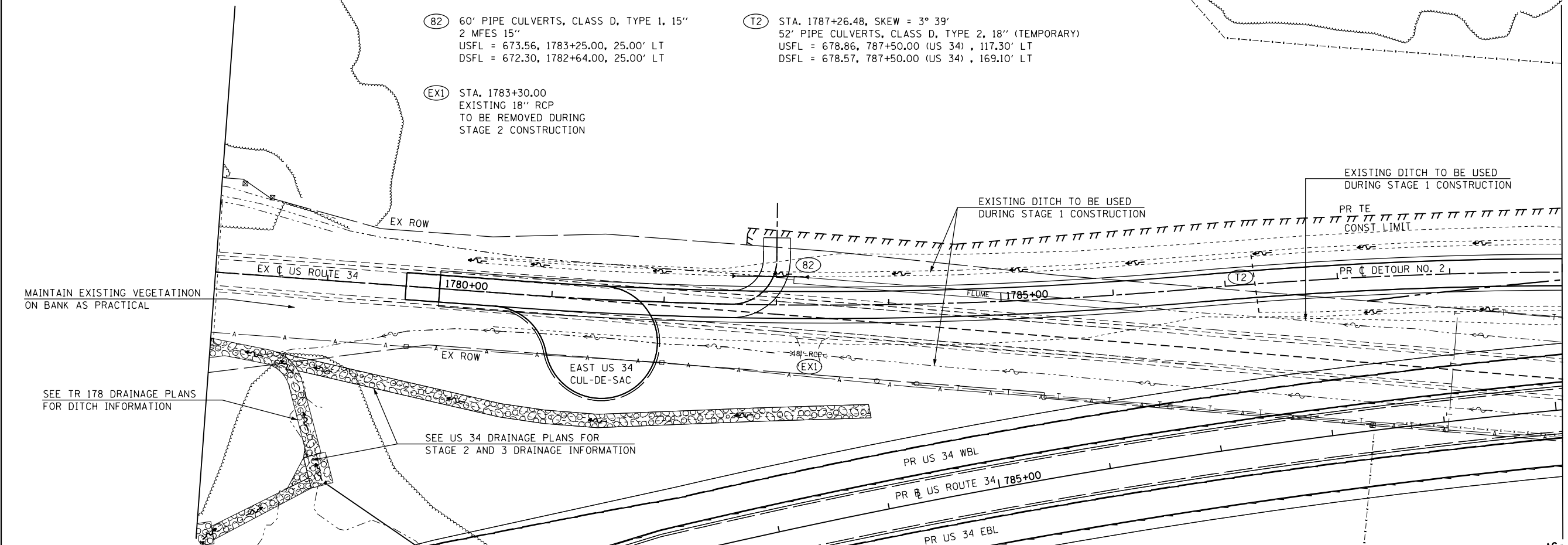
(82) 60' PIPE CULVERTS, CLASS D, TYPE 1, 15" 2 MFES 15"  
 USFL = 673.56, 1783+25.00, 25.00' LT  
 DSFL = 672.30, 1782+64.00, 25.00' LT

(T2) STA. 1787+26.48, SKEW = 3° 39'  
 52' PIPE CULVERTS, CLASS D, TYPE 2, 18" (TEMPORARY)  
 USFL = 678.86, 787+50.00 (US 34) , 117.30' LT  
 DSFL = 678.57, 787+50.00 (US 34) , 169.10' LT

(EX1) STA. 1783+30.00  
 EXISTING 18" RCP  
 TO BE REMOVED DURING  
 STAGE 2 CONSTRUCTION

PLAN	SURVEYED	DATE
	PLOTTED	
	ALIGNED	
	CHECKED	
	FILED	
	BY	
	DATE	
	NO.	

PROFILE	SURVEYED	DATE
	PLOTTED	
	GRADES	
	CHECKED	
	STRUCTURE	
	NOTATIONS	
	CHKD	
	BY	
	DATE	
	NO.	



FILE NAME =	USER NAME = zech1	DESIGNED - DBS	REVISED -	<b>STATE OF ILLINOIS</b> <b>DEPARTMENT OF TRANSPORTATION</b>	<b>DRAINAGE PLAN &amp; PROFILE</b> <b>DETOUR NO. 2</b>			F.A.P. RTE.	SECTION	COUNTY	TOTAL SHEETS	SHEET NO.
D468409-SHT-56-DRAIN-DET2-01.dgn		DRAWN - PSBA	REVISED -		313	7-2 ; 6-1	HENDERSON	976	331			
PLOT SCALE = 100.0000' / 1"		CHECKED - CSB	REVISED -		CONTRACT NO. 68409							
PLOT DATE = 10/16/2012		DATE - 10/2012	REVISED -		ILLINOIS FED. AID PROJECT							