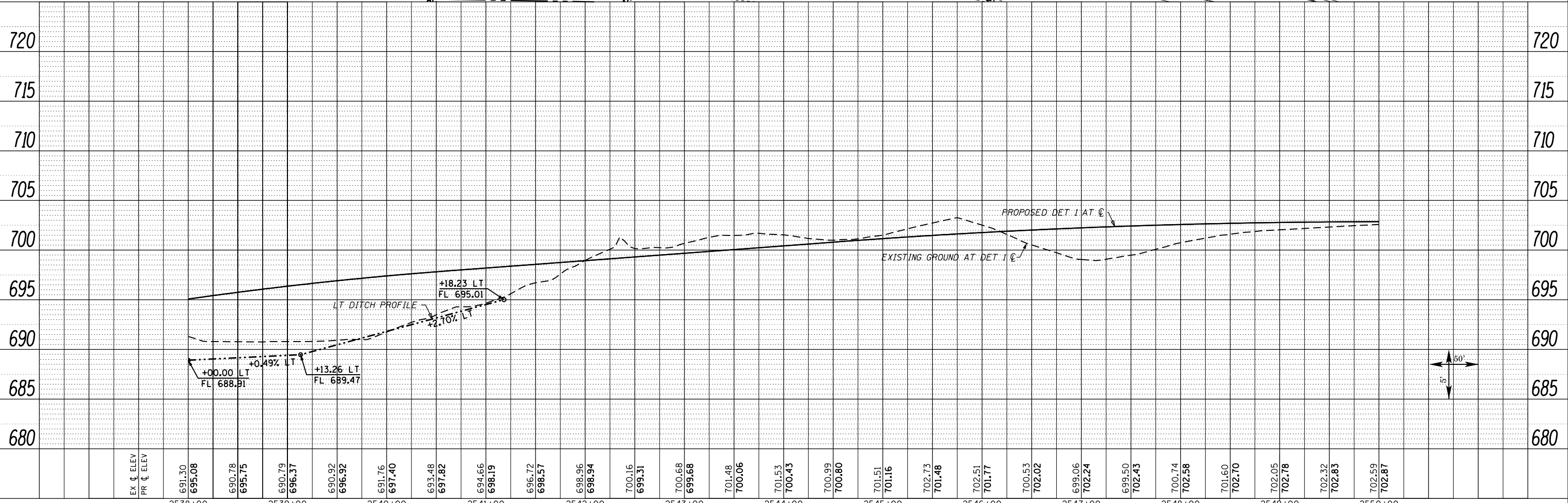
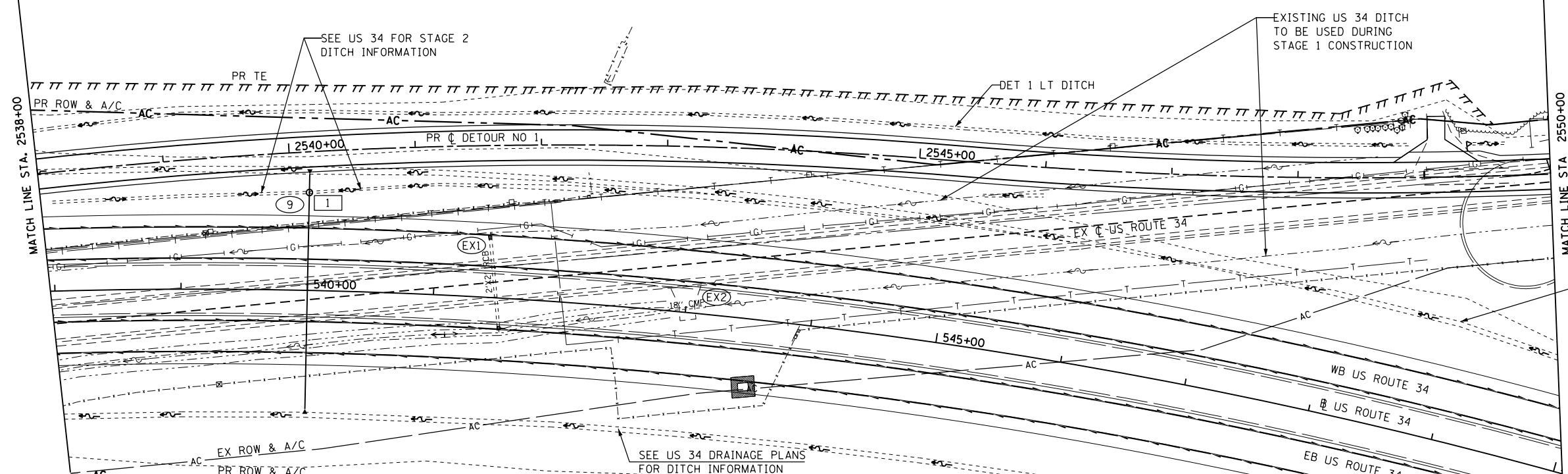


EXISTING STRUCTURES TO REMAIN OPERATIONAL DURING STAGE 1 CONSTRUCTION TO BE REMOVED DURING STAGE 2 CONSTRUCTION (US 34 STATIONING):

(EX1) EXIST 2X2 RCB
 USFL = 693.16, 541+53.24
 OFFSET = 25.22' RT
 DSFL = 691.48, 541+42.19
 OFFSET = 48.65' LT

(EX2) EXIST 18" CMP
 USFL = 695.11, 543+15.30
 OFFSET = 6.18' LT
 DSFL = 694.82, 542+87.37
 OFFSET = 0.90' LT

9 SEE US 34 DRAINAGE PLANS FOR CULVERT & OUTLET INFORMATION
 1



PLAN	SURVEYED	DATE
	PLOTTED	
	ALIGNED	
	CHECKED	
	FILED	
	NO.	

PROFILE	SURVEYED	DATE
	PLOTTED	
	GRADES CHECKED	
	STRUCTURE NOTATIONS CHECKED	
	NO.	

FILE NAME = D468409-SHT-54-DRAIN-DET1-02.dgn	USER NAME = zech1	DESIGNED - DBS	REVISED -	STATE OF ILLINOIS DEPARTMENT OF TRANSPORTATION	DRAINAGE PLAN AND PROFILE DETOUR NO. 1			F.A.P. RTE. 313	SECTION 7-2 ; 6-1	COUNTY HENDERSON	TOTAL SHEETS 976	SHEET NO. 329	
PLOT SCALE = 100.0000' / 1in.	CHECKED - CSB	REVISED -	REVISED -		SCALE: 1" = 50'	SHEET NO. 54 OF 61 SHEETS	STA. 2538+00 TO STA. 2550+00	CONTRACT NO. 68409		ILLINOIS FED. AID PROJECT			
PLOT DATE = 10/16/2012	DATE - 10/2012	REVISED -	REVISED -										