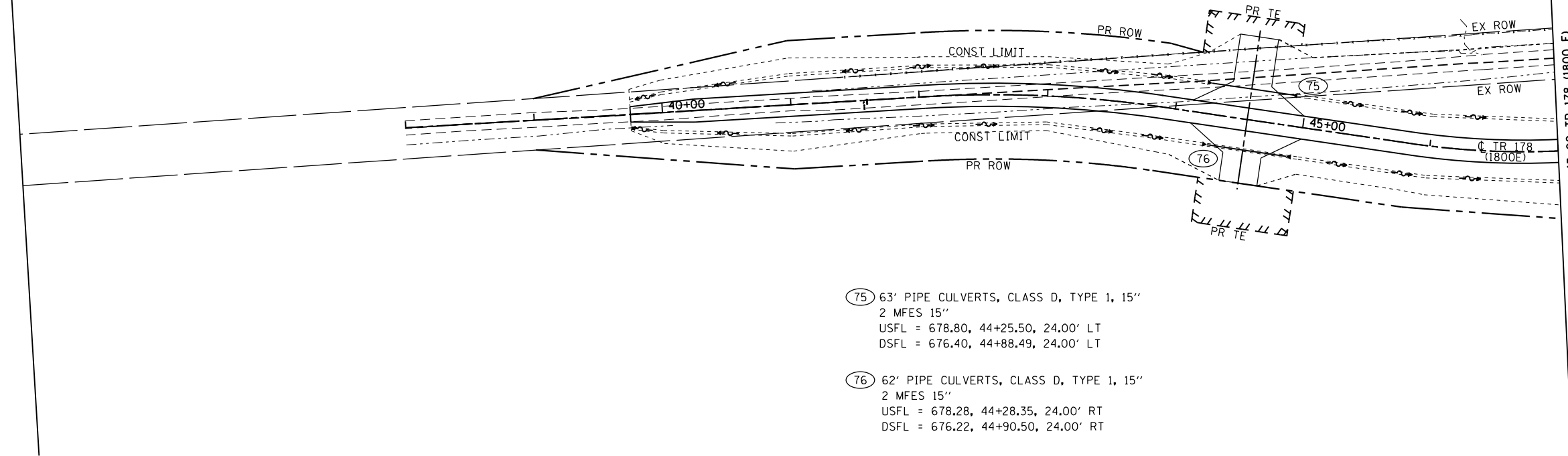


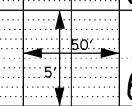
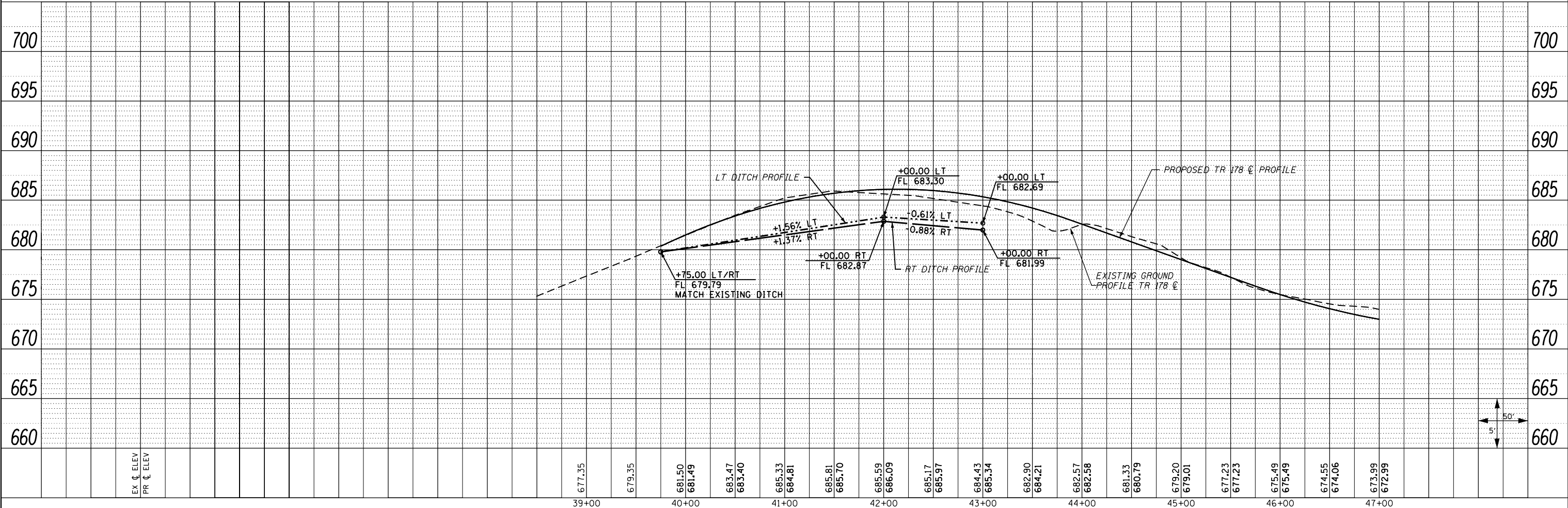
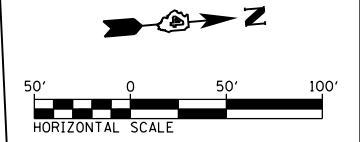
PLAN	SURVEYED	DATE
	PLOTTED	
	ALIGNED	
	CHECKED	
	BY	
	NO.	

PROFILE	SURVEYED	DATE
	PLOTTED	
	GRADES CHECKED	
	STRUCTURE NOTATIONS CHECKED	
	BY	
	NO.	



- 75) 63' PIPE CULVERTS, CLASS D, TYPE 1, 15"
 2 MFES 15"
 USFL = 678.80, 44+25.50, 24.00' LT
 DSFL = 676.40, 44+88.49, 24.00' LT
- 76) 62' PIPE CULVERTS, CLASS D, TYPE 1, 15"
 2 MFES 15"
 USFL = 678.28, 44+28.35, 24.00' RT
 DSFL = 676.22, 44+90.50, 24.00' RT

MATCH LINE STA. 47+00 TR 178 (1800 E)



FILE NAME = D468409-SHT-49-DRAIN-TR178-01.dgn	USER NAME = zachl	DESIGNED - DBS	REVISED -	STATE OF ILLINOIS DEPARTMENT OF TRANSPORTATION	DRAINAGE PLAN AND PROFILE TR 178 (1800E)			F.A.P. RTE. 313	SECTION 7-2 ; 6-1	COUNTY HENDERSON	TOTAL SHEETS 976	SHEET NO. 324
	PLOT SCALE = 100.0000' / in.	CHECKED - CSB	REVISED -		SCALE: 1" = 50'	SHEET NO. 49 OF 61 SHEETS	STA. 40+00.00 TO STA. 47+00.00	CONTRACT NO. 68409		ILLINOIS FED. AID PROJECT		
	PLOT DATE = 10/16/2012	DATE - 10/2012	REVISED -									