

PLAN	SURVEYED	DATE
	PLOTTED	BY
	NOTE BOOK	
	NO.	
	CHECKED	
	FILE NAME	

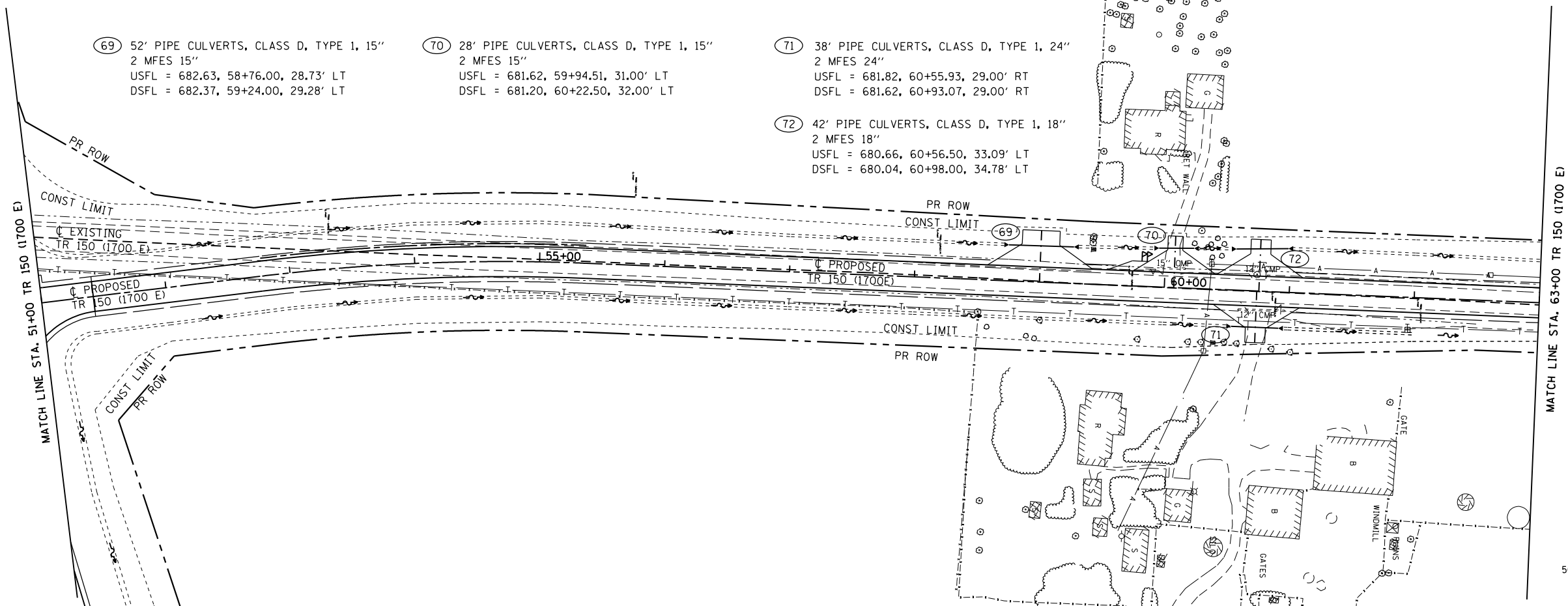
PROFILE	SURVEYED	DATE
	PLOTTED	BY
	NOTE BOOK	
	NO.	
	CHECKED	
	FILE NAME	

69 52' PIPE CULVERTS, CLASS D, TYPE 1, 15"
2 MFES 15"
USFL = 682.63, 58+76.00, 28.73' LT
DSFL = 682.37, 59+24.00, 29.28' LT

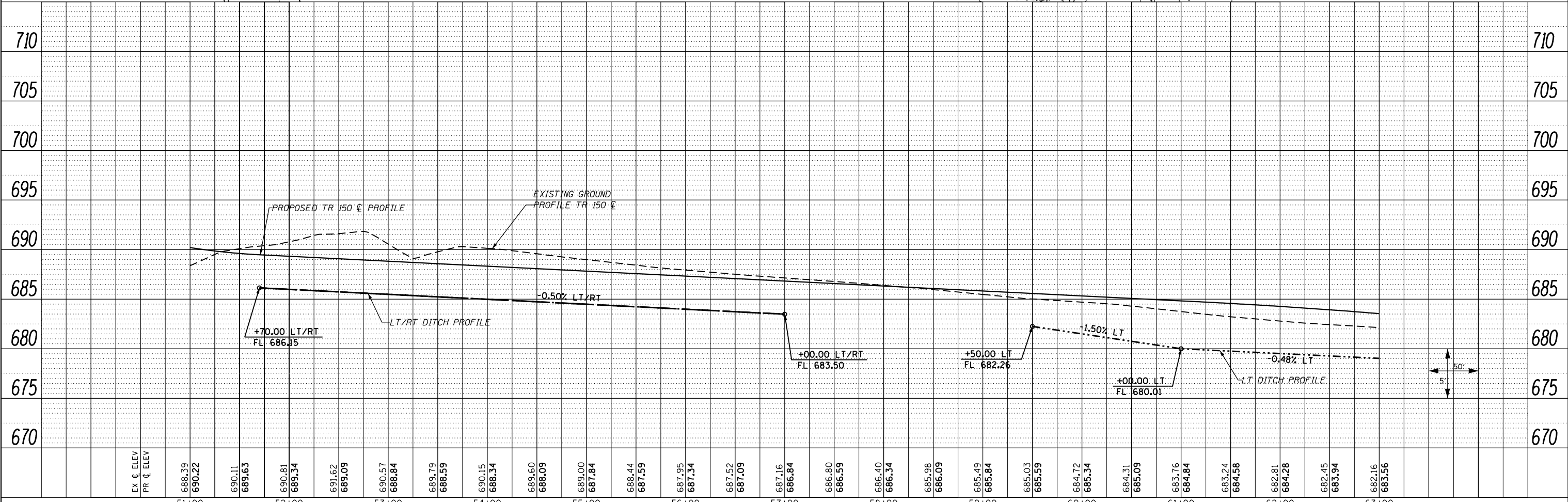
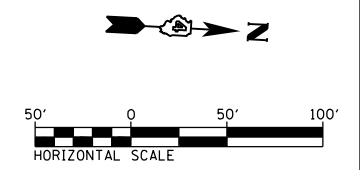
70 28' PIPE CULVERTS, CLASS D, TYPE 1, 15"
2 MFES 15"
USFL = 681.62, 59+94.51, 31.00' LT
DSFL = 681.20, 60+22.50, 32.00' LT

71 38' PIPE CULVERTS, CLASS D, TYPE 1, 24"
2 MFES 24"
USFL = 681.82, 60+55.93, 29.00' RT
DSFL = 681.62, 60+93.07, 29.00' RT

72 42' PIPE CULVERTS, CLASS D, TYPE 1, 18"
2 MFES 18"
USFL = 680.66, 60+56.50, 33.09' LT
DSFL = 680.04, 60+98.00, 34.78' LT



MATCH LINE STA. 63+00 TR 150 (1700 E)



FILE NAME = D468409-SHT-46-DRAIN-TR150-02.dgn	USER NAME = zech1	DESIGNED - DBS	REVISED -	STATE OF ILLINOIS DEPARTMENT OF TRANSPORTATION	DRAINAGE PLAN AND PROFILE TR 150 (1700 E)			F.A.P. RTE. 313	SECTION 7-2 ; 6-1	COUNTY HENDERSON	TOTAL SHEETS 976	SHEET NO. 321
PLOT SCALE = 100.0000' / 1"	CHECKED - CSB	REVISED -	SCALE: 1" = 50'		SHEET NO. 46 OF 61 SHEETS	STA. 51+00 TO STA. 63+00	CONTRACT NO. 68409					
PLOT DATE = 10/16/2012	DATE - 10/2012	REVISED -	ILLINOIS FED. AID PROJECT									