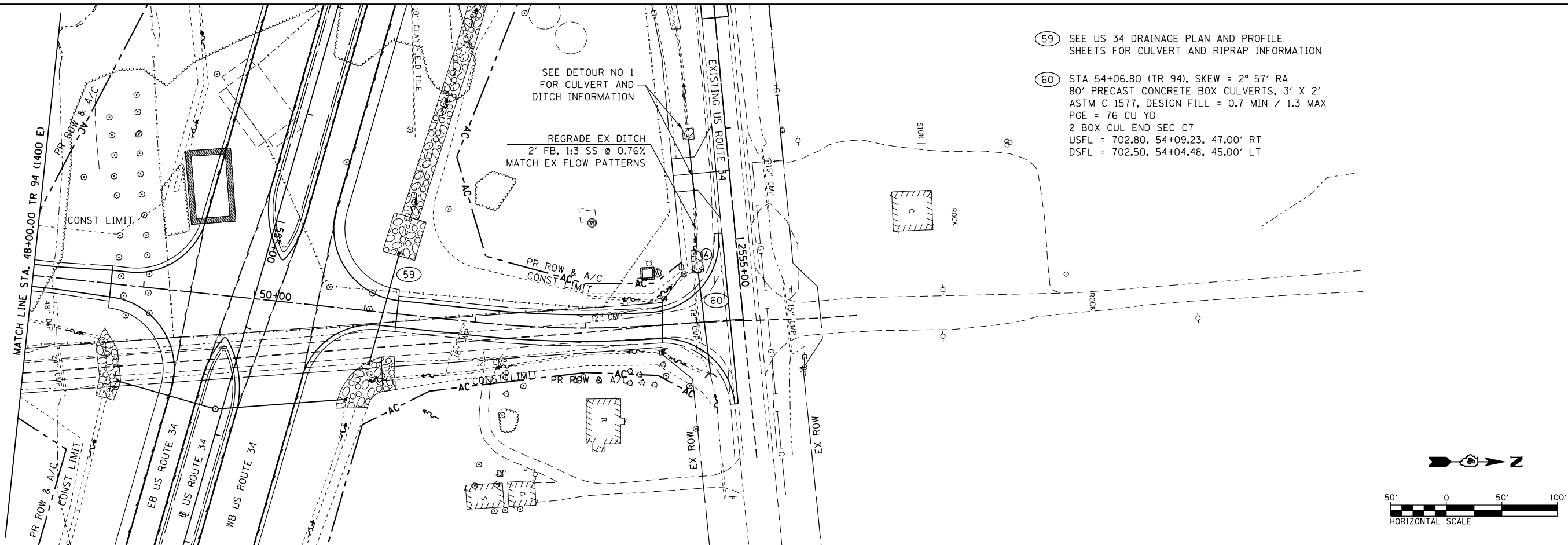


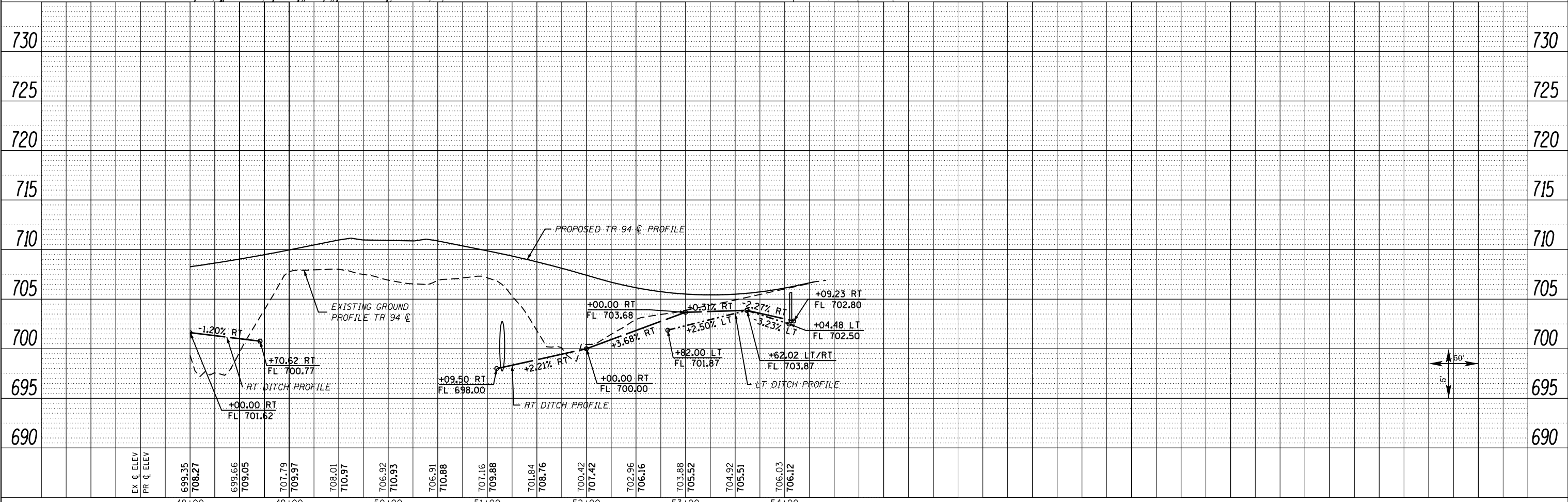
Ⓐ STONE RIPRAP  
CLASS B3  
L20' X W10'

- Ⓔ SEE US 34 DRAINAGE PLAN AND PROFILE SHEETS FOR CULVERT AND RIPRAP INFORMATION
- Ⓕ STA 54+06.80 (TR 94), SKEW = 2° 57' RA  
80' PRECAST CONCRETE BOX CULVERTS, 3' X 2'  
ASTM C 1577, DESIGN FILL = 0.7 MIN / 1.3 MAX  
PGE = 76 CU YD  
2 BOX CUL END SEC C7  
USFL = 702.80, 54+09.23, 47.00' RT  
DSFL = 702.50, 54+04.48, 45.00' LT

PLAN	SURVEYED	DATE
	PLOTTED	
	NOTE BOOK	
	NO.	
	CHECKED	
	FILE NAME	



PROFILE	SURVEYED	DATE
	PLOTTED	
	GRADES CHECKED	
	STRUCTURE NOTATIONS CHECKED	
	NO.	



FILE NAME =	USER NAME = zech1	DESIGNED - DBS	REVISED -	<b>STATE OF ILLINOIS DEPARTMENT OF TRANSPORTATION</b>	<b>DRAINAGE PLAN AND PROFILE TR 94 (1400 E)</b>	F.A.P. RTE.	SECTION	COUNTY	TOTAL SHEETS	SHEET NO.
D468409-SHT-43-DRAIN-TR94-02.dgn		DRAWN - PSBA	REVISED -			313	7-2; 6-1	HENDERSON	976	318
PLOT SCALE = 100.0000' / 1"		CHECKED - CSB	REVISED -			CONTRACT NO. 68409				
PLOT DATE = 10/16/2012		DATE - 10/2012	REVISED -			ILLINOIS FED. AID PROJECT				