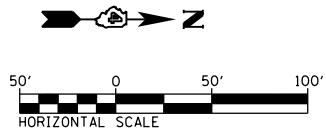


④ STONE RIPRAP
CLASS B4
L20' X W20'

⑤7 49' PIPE CULVERT, CLASS D, TYPE 1, 24"
2 MFES 24"
USFL = 708.46, 40+26.51, 29.00' RT
DSFL = 708.14, 40+73.98, 29.49' RT

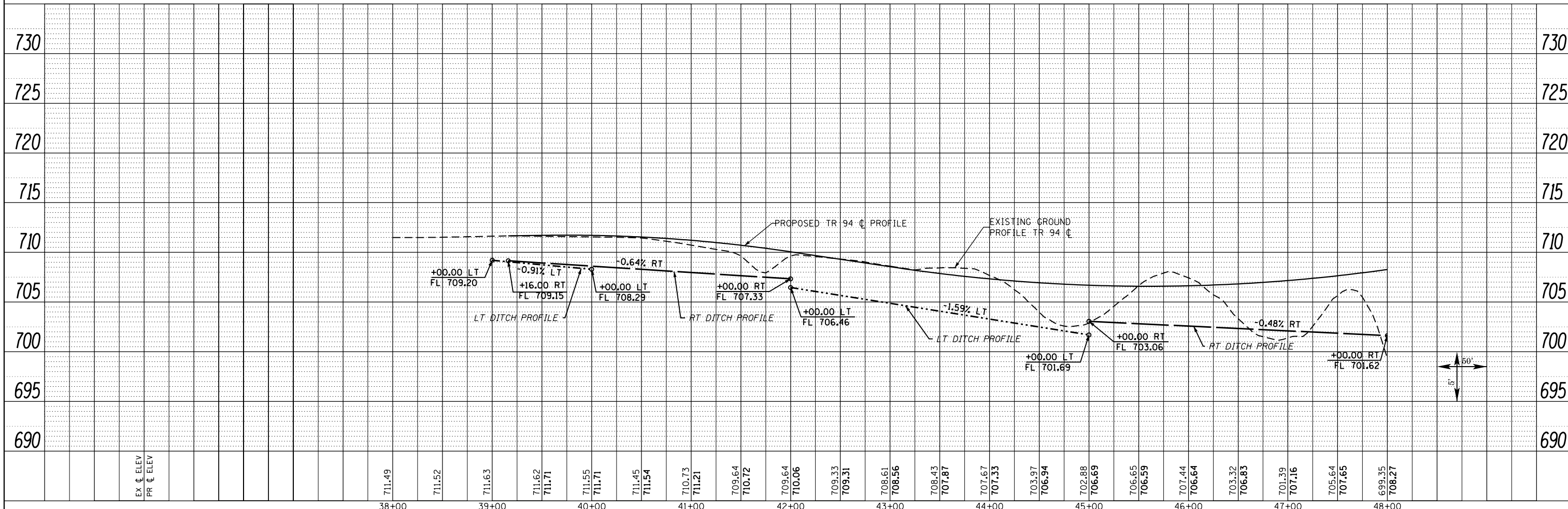
⑤8 64' PIPE CULVERT, CLASS D, TYPE 1, 15"
2 MFES 15"
USFL = 703.23, 44+12.52, 31.91' LT
DSFL = 702.19, 44+74.32, 36.27' LT

STA 39+00.00, LT & RT
MATCH EXISTING DITCH
WIDTHS AND GRADES



PLAN	SURVEYED	DATE
	PLOTTED	
	ALIGNED	
	CHECKED	
	FILED	
	NO.	

PROFILE	SURVEYED	DATE
	PLOTTED	
	GRADES	
	CHECKED	
	STRUCTURE	
	NOTATIONS	
	CHKD	
	NO.	



FILE NAME =	USER NAME = zechl	DESIGNED - DBS	REVISED -	STATE OF ILLINOIS DEPARTMENT OF TRANSPORTATION	DRAINAGE PLAN AND PROFILE TR 94 (1400 E)	F.A.P. RTE.	SECTION	COUNTY	TOTAL SHEETS	SHEET NO.	
D468409-SHT-42-DRAIN-TR94-01.dgn		DRAWN - PSBA	REVISED -			313	7-2; 6-1	HENDERSON	976	317	
PLOT SCALE = 100.0000' / 1"		CHECKED - CSB	REVISED -			CONTRACT NO. 68409					
PLOT DATE = 10/16/2012		DATE - 10/2012	REVISED -			ILLINOIS FED. AID PROJECT					