

(A) STONE RIPRAP  
CLASS B3  
L16' X W10'

(55) SEE US 34 DRAINAGE PLANS FOR  
CULVERT AND RIPRAP INFORMATION

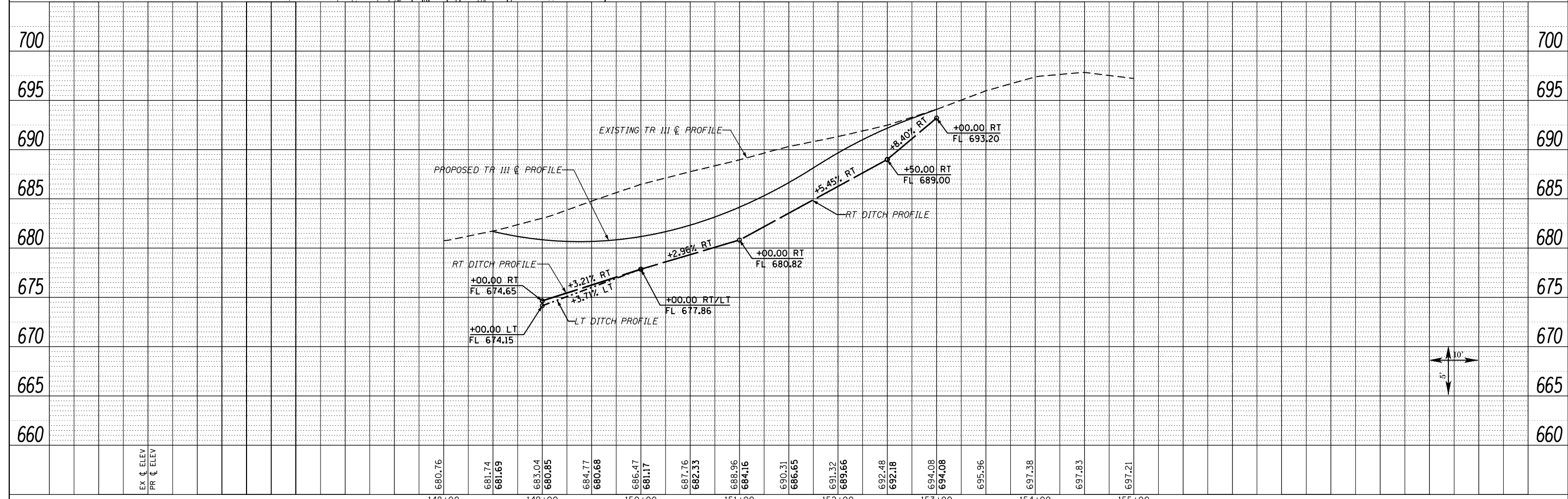
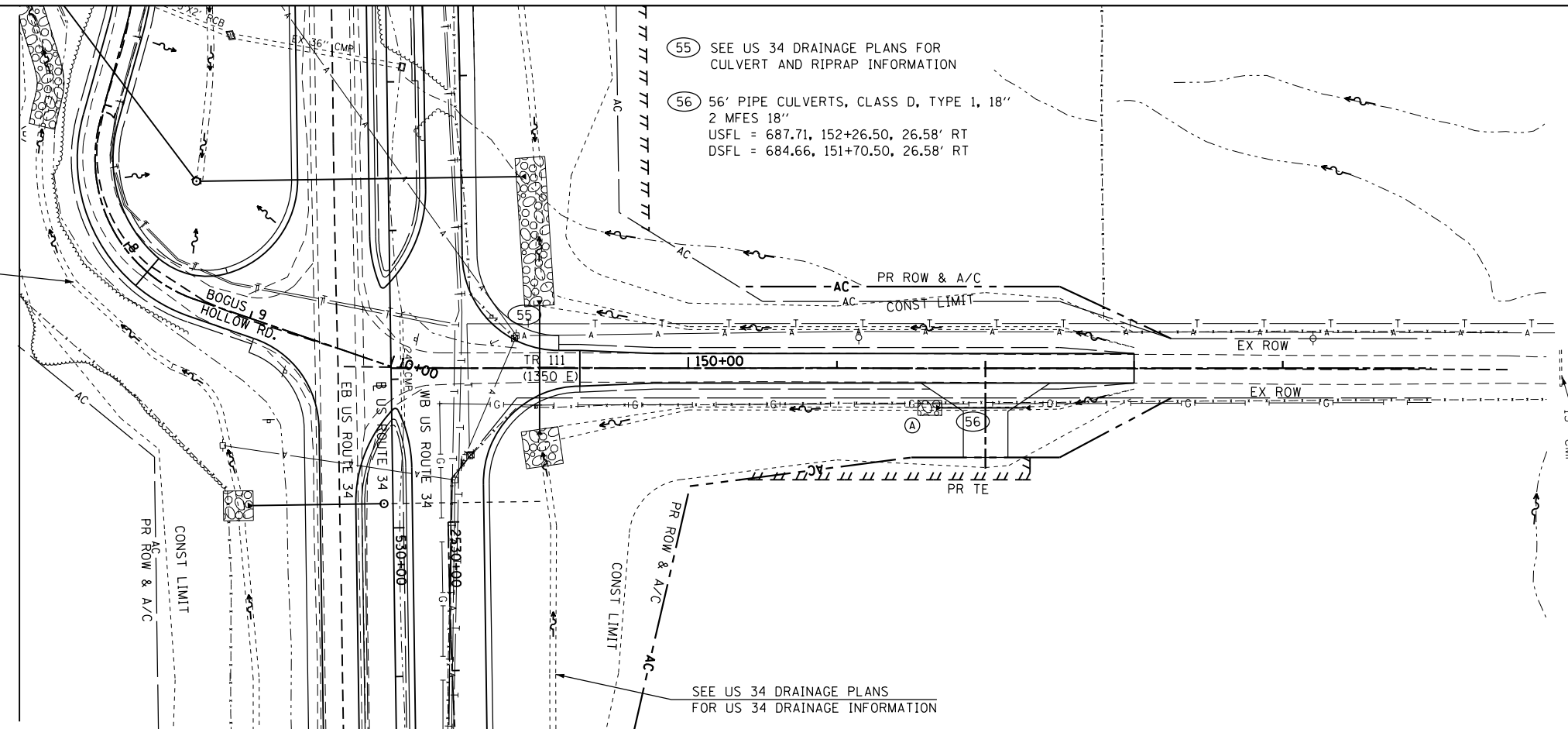
(56) 56" PIPE CULVERTS, CLASS D, TYPE 1, 18"  
2 MFES 18"  
USFL = 687.71, 152+26.50, 26.58' RT  
DSFL = 684.66, 151+70.50, 26.58' RT

SEE BOGUS HOLLOW RD  
DRAINAGE PLANS FOR  
DRAINAGE INFORMATION

SEE US 34 DRAINAGE PLANS  
FOR US 34 DRAINAGE INFORMATION

DATE	
BY	
PLAN	
NO.	
NO.	
NO.	
NO.	
NO.	
NO.	

DATE	
BY	
PROFILE	
NO.	
NO.	
NO.	
NO.	
NO.	
NO.	



FILE NAME = D468409-SHT-41-DRAIN-TR111-01.dgn	USER NAME = zech1	DESIGNED - DBS	REVISOR -	<b>STATE OF ILLINOIS</b> <b>DEPARTMENT OF TRANSPORTATION</b>	<b>DRAINAGE PLAN AND PROFILE</b> <b>TR 111 (1350 E)</b>			F.A.P. RTE. 313	SECTION 7-2 ; 6-1	COUNTY HENDERSON	TOTAL SHEETS 976	SHEET NO. 316	
	PLOT SCALE = 100.0000' / 1" =	CHECKED - CSB	REVISOR -		SCALE: 1" = 50'	SHEET NO. 41 OF 61 SHEETS	STA. 149+00 TO STA. 153+00	CONTRACT NO. 68409		ILLINOIS FED. AID PROJECT			
	PLOT DATE = 10/16/2012	DATE - 10/2012	REVISOR -										