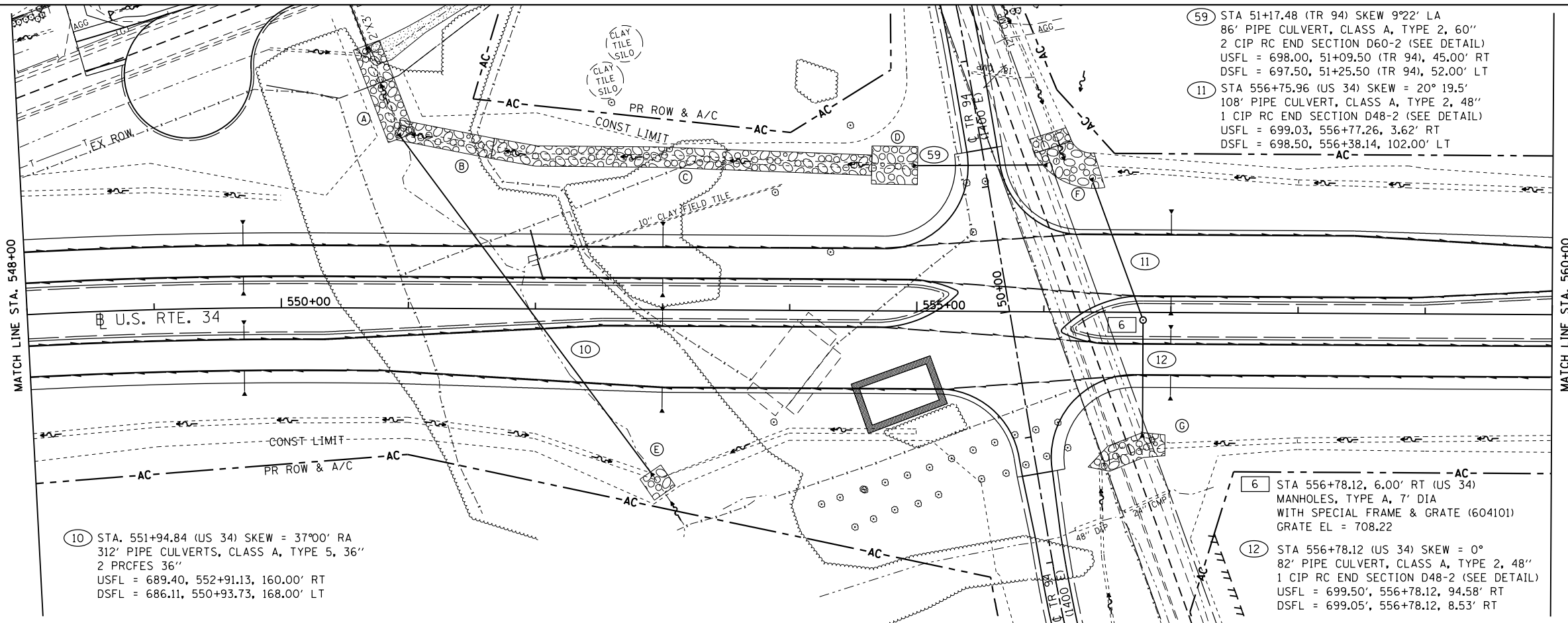


- (A) STONE RIPRAP CLASS B5 L75' X W22'
- (B) STONE RIPRAP CLASS B5 L70' X W16'
- (C) STONE RIPRAP CLASS B4 L300' X W16'
- (D) STONE RIPRAP CLASS B5 L36' X W30'
- (E) STONE RIPRAP CLASS B4 L20' X W20'
- (F) STONE RIPRAP CLASS B4 L55' X W30'
- (G) STONE RIPRAP CLASS B4 L50' X W20'

PLAN	SURVEYED	DATE
	PLOTTED	BY
	NOTE BOOK	
	NO.	
	CHECKED	
	FILE NAME	
	NO.	



(59) STA 51+17.48 (TR 94) SKEW 9°22' LA 86' PIPE CULVERT, CLASS A, TYPE 2, 60" 2 CIP RC END SECTION D60-2 (SEE DETAIL) USFL = 698.00, 51+09.50 (TR 94), 45.00' RT DSFL = 697.50, 51+25.50 (TR 94), 52.00' LT

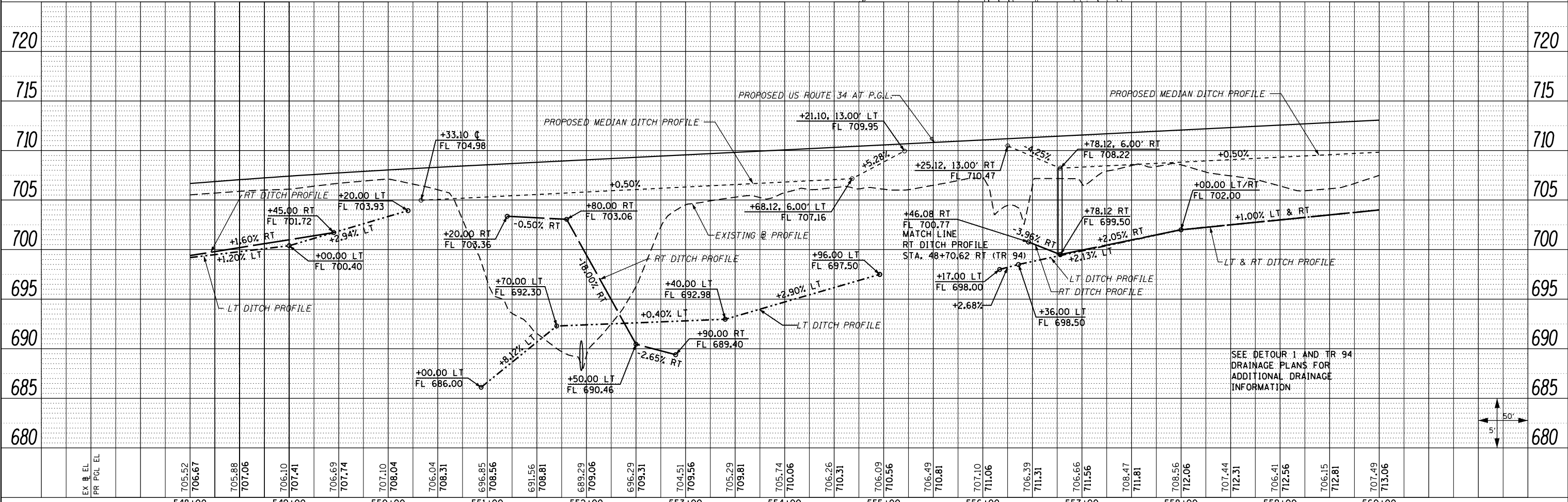
(11) STA 556+75.96 (US 34) SKEW = 20° 19.5' 108' PIPE CULVERT, CLASS A, TYPE 2, 48" 1 CIP RC END SECTION D48-2 (SEE DETAIL) USFL = 699.03, 556+77.26, 3.62' RT DSFL = 698.50, 556+38.14, 102.00' LT

(10) STA. 551+94.84 (US 34) SKEW = 37°00' RA 312' PIPE CULVERTS, CLASS A, TYPE 5, 36" 2 PRCFS 36" USFL = 689.40, 552+91.13, 160.00' RT DSFL = 686.11, 550+93.73, 168.00' LT

(6) STA 556+78.12, 6.00' RT (US 34) MANHOLES, TYPE A, 7' DIA WITH SPECIAL FRAME & GRATE (604101) GRATE EL = 708.22

(12) STA 556+78.12 (US 34) SKEW = 0° 82' PIPE CULVERT, CLASS A, TYPE 2, 48" 1 CIP RC END SECTION D48-2 (SEE DETAIL) USFL = 699.50', 556+78.12, 94.58' RT DSFL = 699.05', 556+78.12, 8.53' RT

PROFILE	SURVEYED	DATE
	PLOTTED	BY
	GRADES CHECKED	
	STRUCTURE NOTATIONS CHECKED	
	NO.	



SEE DETOUR 1 AND TR 94 DRAINAGE PLANS FOR ADDITIONAL DRAINAGE INFORMATION

FILE NAME =	USER NAME = zech1	DESIGNED - DBS	REVISED -	STATE OF ILLINOIS		F.A.P. 313	SECTION 7-2 ; 6-1	COUNTY HENDERSON	TOTAL SHEETS 976	SHEET NO. 278
D468409-sh-04-drain-US34-04.dgn		DRAWN - PSBA	REVISED -	DEPARTMENT OF TRANSPORTATION		DRAINAGE PLAN AND PROFILE		CONTRACT NO. 68409		
	PLOT SCALE = 100.0000' / 1"	CHECKED - CSB	REVISED -			US ROUTE 34		ILLINOIS FED. AID PROJECT		
	PLOT DATE = 10/16/2012	DATE - 10/2012	REVISED -			SCALE: 1"=50'	SHEET NO. 4 OF 61 SHEETS	STA. 548+00 TO STA. 560+00		