
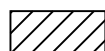


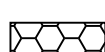


-  GRADING, DRAINAGE STRUCTURES AND PAVEMENT
-  GRADING AND DRAINAGE STRUCTURES
-  PAVING OF PREVIOUSLY GRADED SECTION
-  TEMPORARY CROSSOVER
-  REMOVAL OF TEMPORARY PAVEMENT

MAINTENANCE OF TRAFFIC STAGE 3B

SEQUENCE OF CONSTRUCTION - STAGE 3B

1. REMOVE US 34 DETOUR No. 1, COMPLETE EMBANKMENT PROPOSED US 34 FROM STA 515+00 TO 537+00±.
2. PAVE FINAL SURFACE COURSE UNDER TRAFFIC ON US 34 FROM STA 515+00 TO STA 537+00±.
3. PLACE EMBANKMENT AND PAVE WEST CUL-DE-SAC ON EXISTING US 34.

TRAFFIC PLACEMENT - STAGE 3B

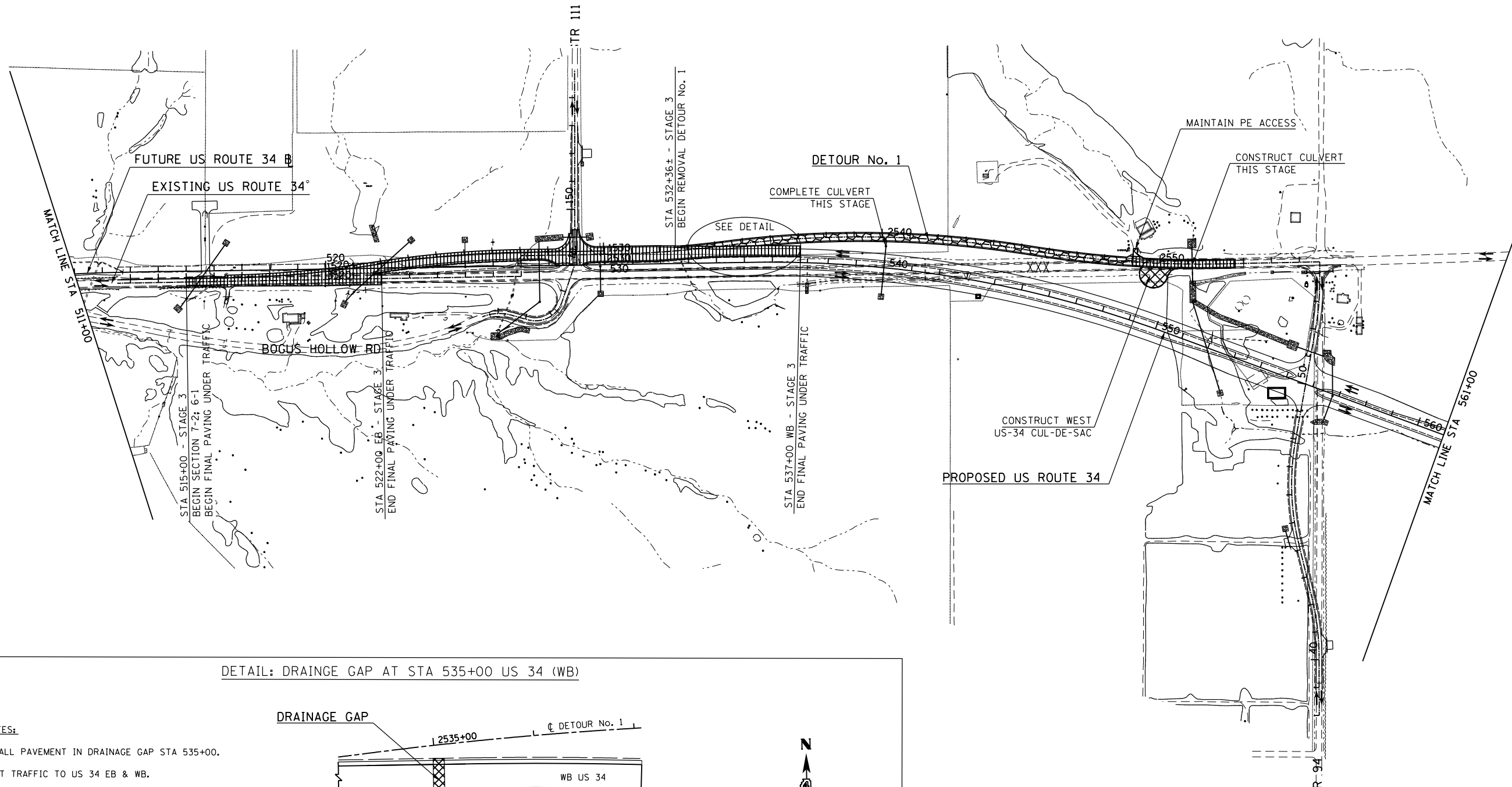
1. STAGE 3A (SHIFT DETOUR No. 3 TRAFFIC TO RECONSTRUCT IL 94 / 116) MUST BE COMPLETE PRIOR TO STAGE 3B.
2. SHIFT DETOUR No. 1 TRAFFIC TO FUTURE US 34 SIMULTANEOUSLY WITH TRAFFIC SHIFT OF DETOUR No. 2.

TRAFFIC CONTROL STANDARDS

701001 701006 701011 701326

NOTES:

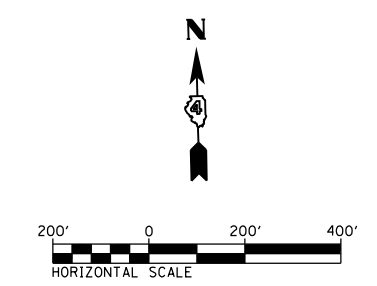
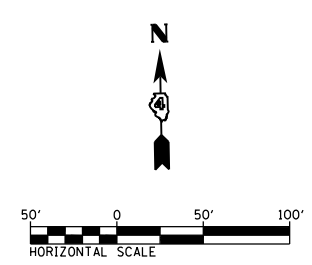
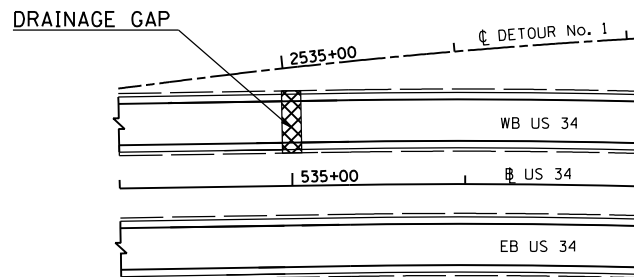
1. PLACE FINISH SURFACE UNDER TRAFFIC USING STANDARD 701400 & 701406.
2. ALL SIDEROADS / ENTRANCES NOT BEING CLOSED FOR CONSTRUCTION ARE TO REMAIN OPEN AND BE CONSTRUCTED WITH MINIMAL TEMPORARY SHUTDOWNS AT DIRECTION OF THE ENGINEER.



DETAIL: DRAINAGE GAP AT STA 535+00 US 34 (WB)

KEY NOTES:

- 1.) INSTALL PAVEMENT IN DRAINAGE GAP STA 535+00.
- 2.) SHIFT TRAFFIC TO US 34 EB & WB.
- 3.) PLACE FINISH SURFACE EB & WB UNDER TRAFFIC.
- 4.) REMOVE DETOUR No. 1 AND INSTALL OUTER SHOULDER OF US 34 (WB) FROM STA 515+00 TO STA 537+00.



FILE NAME = D468409-SHT-STAGING_3-16.dgn

USER NAME = zach1
 PLOT SCALE = 400.0000' / in.
 PLOT DATE = 10/16/2012

DESIGNED - DBS
 DRAWN - PSBA
 CHECKED - CSB
 DATE - 10/2012

REVISED -
 REVISED -
 REVISED -
 REVISED -

**STATE OF ILLINOIS
 DEPARTMENT OF TRANSPORTATION**

**CONSTRUCTION STAGING PLANS
 STAGE 3A & 3B - US ROUTE 34**

SCALE: 1" = 200' SHEET NO. 16 OF 17 SHEETS STA. 500+00 TO STA. 550+00

F.A.P. RTE.	SECTION	COUNTY	TOTAL SHEETS	SHEET NO.
313	7-2; 6-1	HENDERSON	976	239
CONTRACT NO. 68409				
ILLINOIS FED. AID PROJECT				