
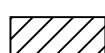




-  GRADING, DRAINAGE STRUCTURES AND PAVEMENT
-  GRADING AND DRAINAGE STRUCTURES
-  PAVING OF PREVIOUSLY GRADED SECTION
-  TEMPORARY CROSSOVER

MAINTENANCE OF TRAFFIC STAGE 2

SEQUENCE OF CONSTRUCTION

1. PAVE PROPOSED US 34 FROM STA 550+00 TO STA 591+00±.
2. PLACE EMBANKMENT, DRAINAGE STRUCTURES AND PAVE PROPOSED US 34 FROM STA 591+00± TO STA 600+00.
2. PLACE EMBANKMENT, DRAINAGE STRUCTURES AND PAVE RAMP C FROM STA 0+00 TO STA 21+98.
3. PLACE EMBANKMENT, DRAINAGE STRUCTURES AND PAVE RAMP D FROM STA 0+23 TO STA 24+49.

TRAFFIC PLACEMENT

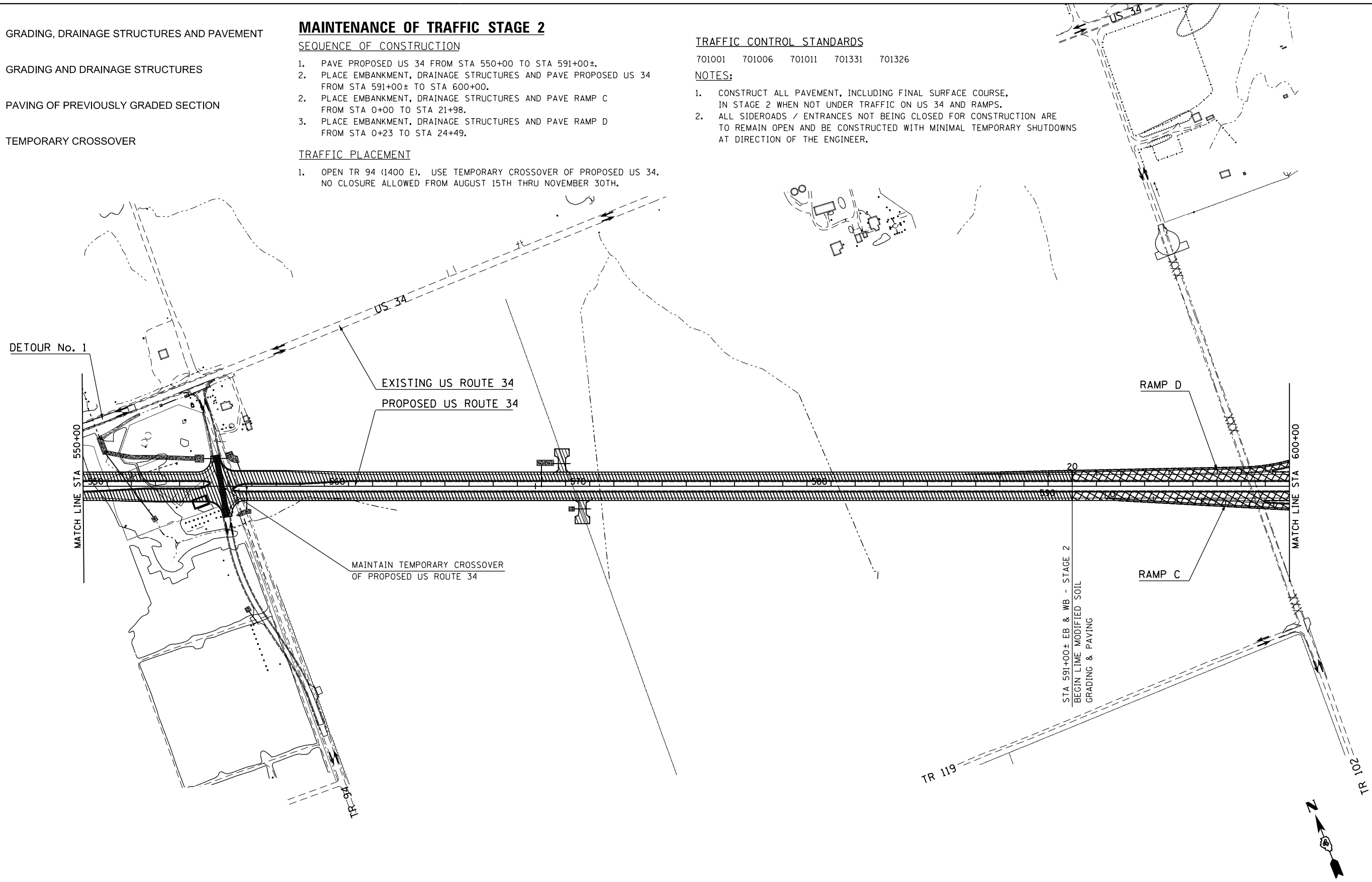
1. OPEN TR 94 (1400 E). USE TEMPORARY CROSSOVER OF PROPOSED US 34. NO CLOSURE ALLOWED FROM AUGUST 15TH THRU NOVEMBER 30TH.

TRAFFIC CONTROL STANDARDS

701001 701006 701011 701331 701326

NOTES:

1. CONSTRUCT ALL PAVEMENT, INCLUDING FINAL SURFACE COURSE, IN STAGE 2 WHEN NOT UNDER TRAFFIC ON US 34 AND RAMPS.
2. ALL SIDEROADS / ENTRANCES NOT BEING CLOSED FOR CONSTRUCTION ARE TO REMAIN OPEN AND BE CONSTRUCTED WITH MINIMAL TEMPORARY SHUTDOWNS AT DIRECTION OF THE ENGINEER.



FILE NAME = D468409-SHT-STAGING-2-09.dgn	USER NAME = zach1	DESIGNED - DBS	REVISED -
		DRAWN - PSBA	REVISED -
	PLOT SCALE = 400.0000' / in.	CHECKED - CSB	REVISED -
	PLOT DATE = 10/16/2012	DATE - 10/2012	REVISED -

**STATE OF ILLINOIS
DEPARTMENT OF TRANSPORTATION**

**CONSTRUCTION STAGING PLANS
STAGE 2 - US ROUTE 34**

SCALE: 1" = 200' SHEET NO. 9 OF 17 SHEETS STA. 550+00 TO STA. 600+00

F.A.P. RTE.	SECTION	COUNTY	TOTAL SHEETS	SHEET NO.
313	7-2; 6-1	HENDERSON	976	232
CONTRACT NO. 68409				
ILLINOIS FED. AID PROJECT				