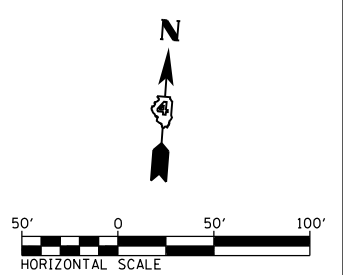
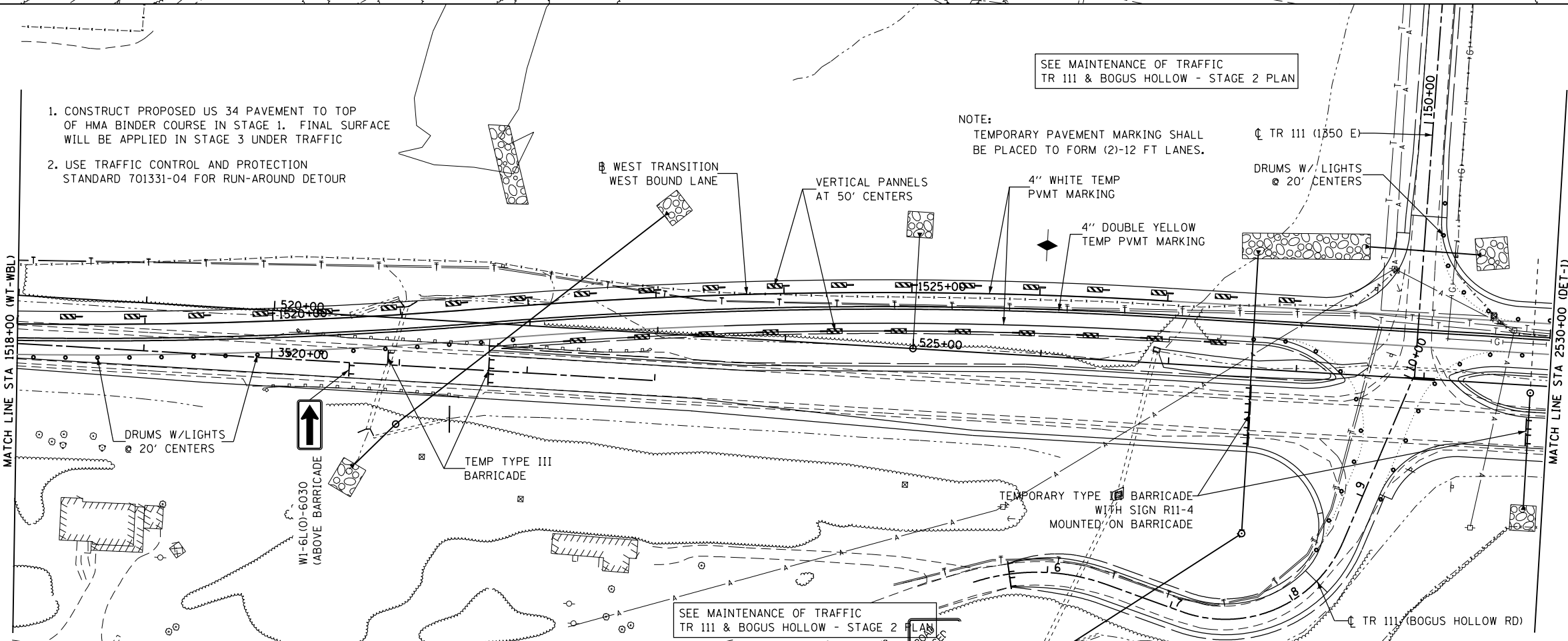
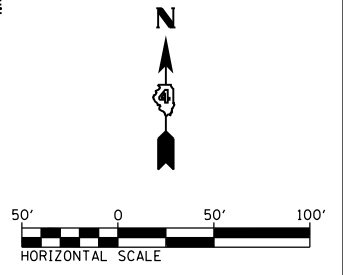
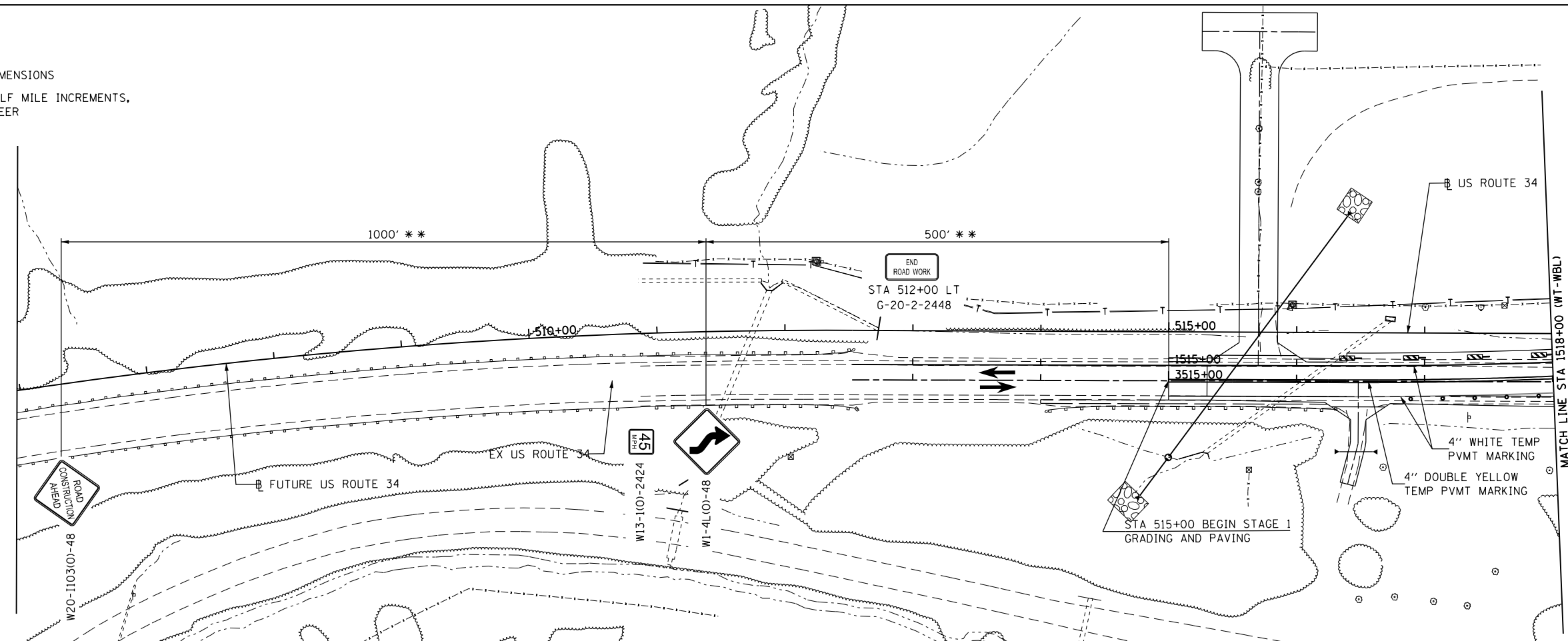


•• NOT TO SCALE, FOLLOW DIMENSIONS
 ••• SIGNS ARE LOCATED AT HALF MILE INCREMENTS,
 OR AS DIRECTED BY ENGINEER



1. CONSTRUCT PROPOSED US 34 PAVEMENT TO TOP OF HMA BINDER COURSE IN STAGE 1. FINAL SURFACE WILL BE APPLIED IN STAGE 3 UNDER TRAFFIC
2. USE TRAFFIC CONTROL AND PROTECTION STANDARD 701331-04 FOR RUN-AROUND DETOUR

NOTE:
 TEMPORARY PAVEMENT MARKING SHALL BE PLACED TO FORM (2)-12 FT LANES.

SEE MAINTENANCE OF TRAFFIC TR 111 & BOGUS HOLLOW - STAGE 2 PLAN

SEE MAINTENANCE OF TRAFFIC TR 111 & BOGUS HOLLOW - STAGE 2 PLAN

FILE NAME = D468409-SHT-15-STAGE2-US34.dgn
 USER NAME = zach1

DESIGNED - DBS
 DRAWN - PSBA
 CHECKED - CSB
 DATE - 10/2012

REVISED -
 REVISED -
 REVISED -
 REVISED -

STATE OF ILLINOIS
 DEPARTMENT OF TRANSPORTATION

MAINTENANCE OF TRAFFIC
 STAGE 2 - US ROUTE 34 & DETOUR No. 1

SCALE: 1" = 50'
 SHEET NO. 15 OF 22 SHEETS
 STA. 506+00 TO STA. 2530+00

F.A.P. RTE.	SECTION	COUNTY	TOTAL SHEETS	SHEET NO.
313	7-2; 6-1	HENDERSON	976	216
CONTRACT NO. 68409				
ILLINOIS FED. AID PROJECT				