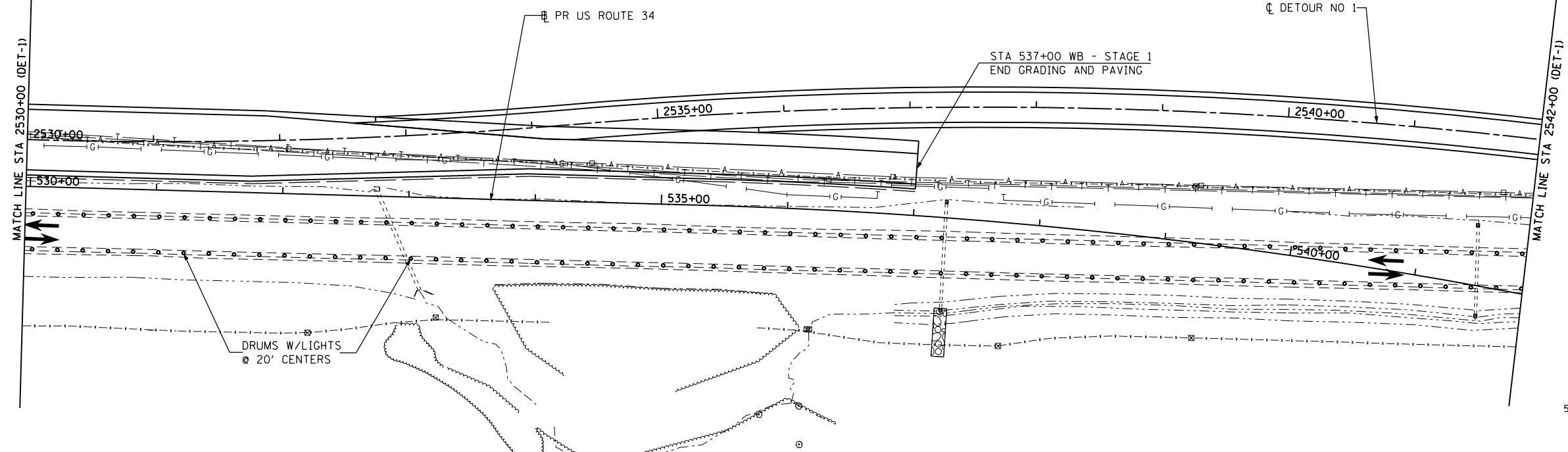


MAINTAIN TRAFFIC ON EXISTING US ROUTE 34
FOR CONSTRUCTION OF DETOUR No. 1

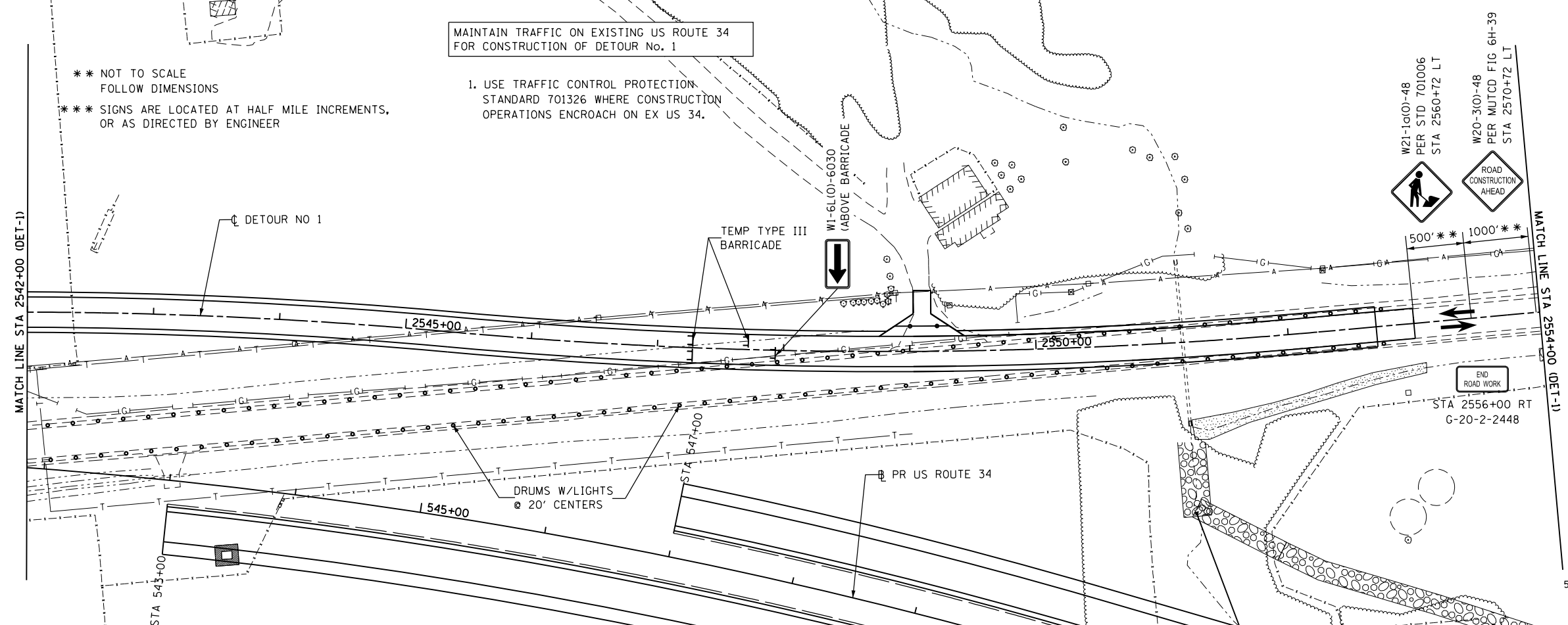
NOTE:
TEMPORARY PAVEMENT MARKING SHALL
BE PLACED TO FORM (2)-12 FT LANES.



MAINTAIN TRAFFIC ON EXISTING US ROUTE 34
FOR CONSTRUCTION OF DETOUR No. 1

** NOT TO SCALE
FOLLOW DIMENSIONS
*** SIGNS ARE LOCATED AT HALF MILE INCREMENTS,
OR AS DIRECTED BY ENGINEER

1. USE TRAFFIC CONTROL PROTECTION
STANDARD 701326 WHERE CONSTRUCTION
OPERATIONS ENCR OACH ON EX US 34.



FILE NAME =
D468409-SHT-03-STAGE1-DET-1.dgn

USER NAME = zachl
PLOT SCALE = 100.0000' / in.
PLOT DATE = 10/16/2012

DESIGNED - DBS
DRAWN - PSBA
CHECKED - CSB
DATE - 10/2012

REVISED -
REVISED -
REVISED -
REVISED -

**STATE OF ILLINOIS
DEPARTMENT OF TRANSPORTATION**

**MAINTENANCE OF TRAFFIC
STAGE 1 - US ROUTE 34 & DETOUR No. 1**
SCALE: 1" = 50'
SHEET NO. 3 OF 22 SHEETS
STA. 2530+00 TO STA. 2554+00

F.A.P. RTE.	SECTION	COUNTY	TOTAL SHEETS	SHEET NO.
313	7-2; 6-1	HENDERSON	976	204
CONTRACT NO. 68409				
ILLINOIS FED. AID PROJECT				