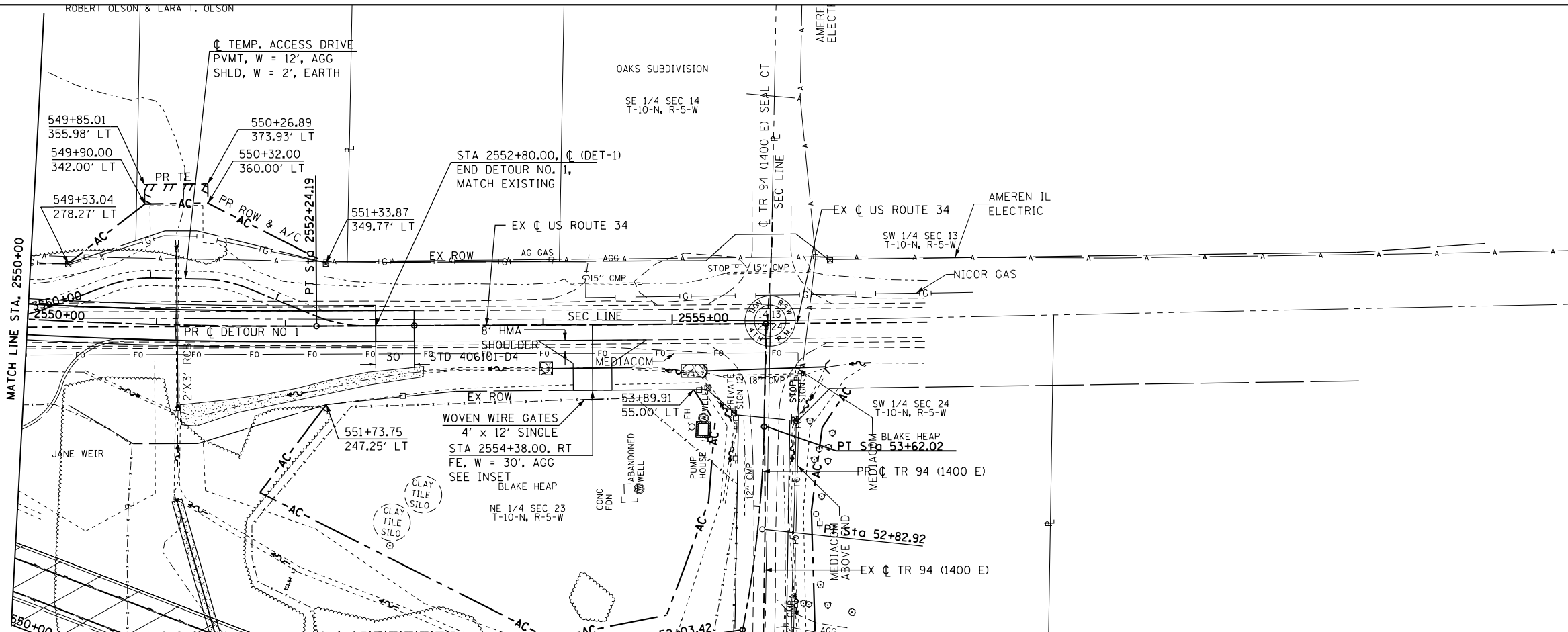


ROBERT OLSON & LARA T. OLSON

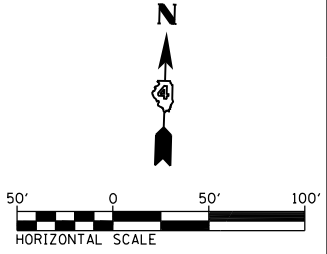
PROP. CURVE DET-1-3
 PI STA. = 2548+80.37
 $\Delta = 10^\circ 20' 31''$ (LT)
 $D = 1^\circ 30' 00''$
 $R = 3,820.00'$
 $T = 345.70'$
 $L = 689.52'$
 $E = 15.61'$
 $e = N.C.$ (60 MPH)
 $T.R. = N.A.$
 $S.E. RUN = N.A.$
 $P.C. STA. = 2545+34.67$
 $P.T. STA. = 2552+24.19$

SEE DETOUR NO. 1 - TEMP
 ACCESS DR PLAN & PROFILE
 FOR LAYOUT INFORMATION

SEE WEST US 34 CUL-DE-SAC
 INTERSECTION DETAIL
 FOR LAYOUT INFORMATION

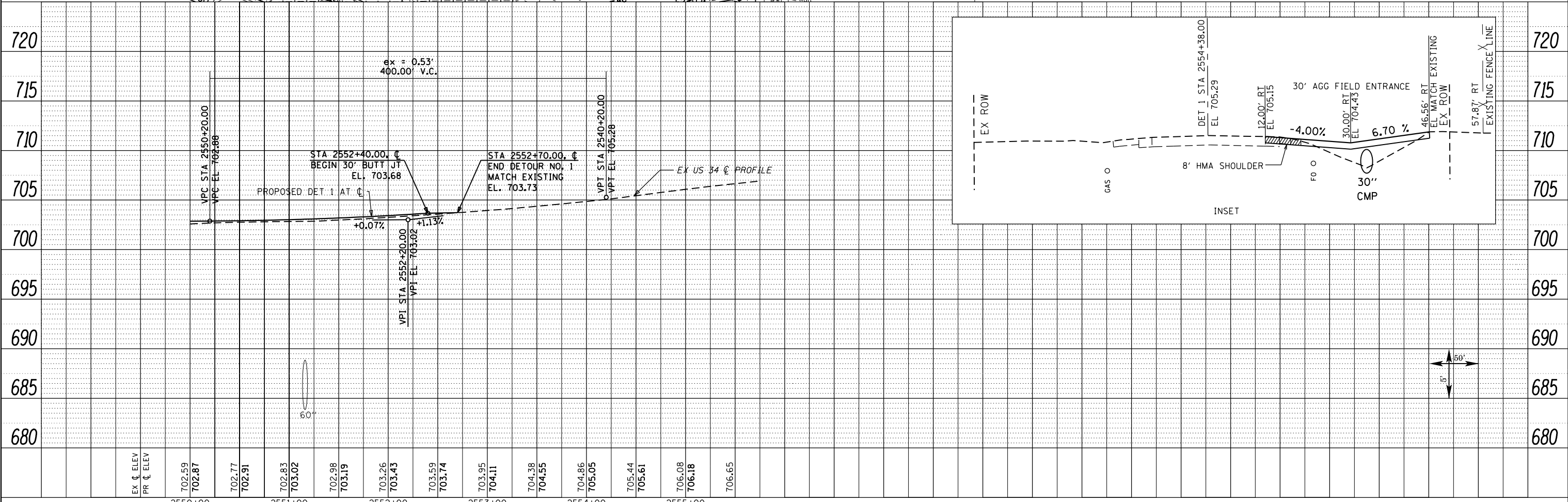


MATCH LINE STA. 2555+73 EXT. 627.44



PLAN	SURVEYED	DATE
	PLOTTED	
	GRADES CHECKED	
	STRUCTURE NOTATIONS CHECKED	
	NOTE BOOK NO.	
	FIELD FILE NAME	

PROFILE	SURVEYED	DATE
	PLOTTED	
	GRADES CHECKED	
	STRUCTURE NOTATIONS CHECKED	
	NOTE BOOK NO.	
	FIELD FILE NAME	



FILE NAME =	USER NAME = zech1	DESIGNED - DBS	REVISED -
D468409-SHT-60-PLNPRF-DET1-03.dgn		DRAWN - PSBA	REVISED -
		CHECKED - CSB	REVISED -
		DATE - 10/2012	REVISED -

STATE OF ILLINOIS
 DEPARTMENT OF TRANSPORTATION

ROADWAY PLAN & PROFILE
 DETOUR NO. 1

F.A.P. RTE.	SECTION	COUNTY	TOTAL SHEETS	SHEET NO.
313	7-2 ; 6-1	HENDERSON	976	194
CONTRACT NO. 68409				

SCALE: 1" = 50' SHEET NO. 60 OF 67 SHEETS STA. 2550+00 TO STA. 2555+72.56

ILLINOIS FED. AID PROJECT