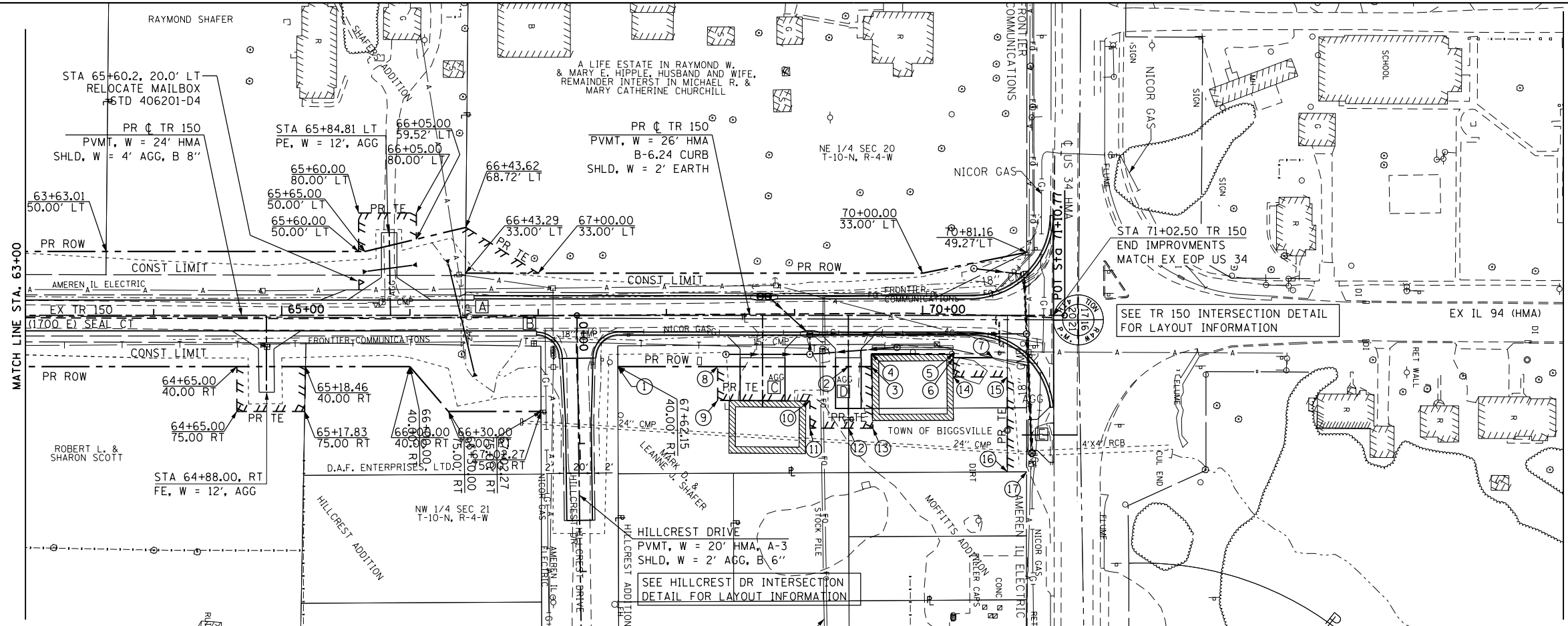


PLAN	SURVEYED	BY	DATE
	PLOTTED		
	NOTE BOOK		
	NO.		
	CHECKED		
	FILE NAME		

PROFILE	SURVEYED	BY	DATE
	GRADES CHECKED		
	STRUCTURE		
	NOTATIS CHFD		

- A STA 66+50.00 LT
BEGIN B-6.24 CC&G
- B STA 66+98.73 RT
BEGIN B-6.24 CC&G
- C STA 68+75.00 RT
CE, W = 35', CONC 7" / AGG
- D STA 69+42.00 RT
CE, W = 20', CONC 7" / AGG
- E STA 71+02.37, 93.25' RT
CE, W = 24', CONC 7"

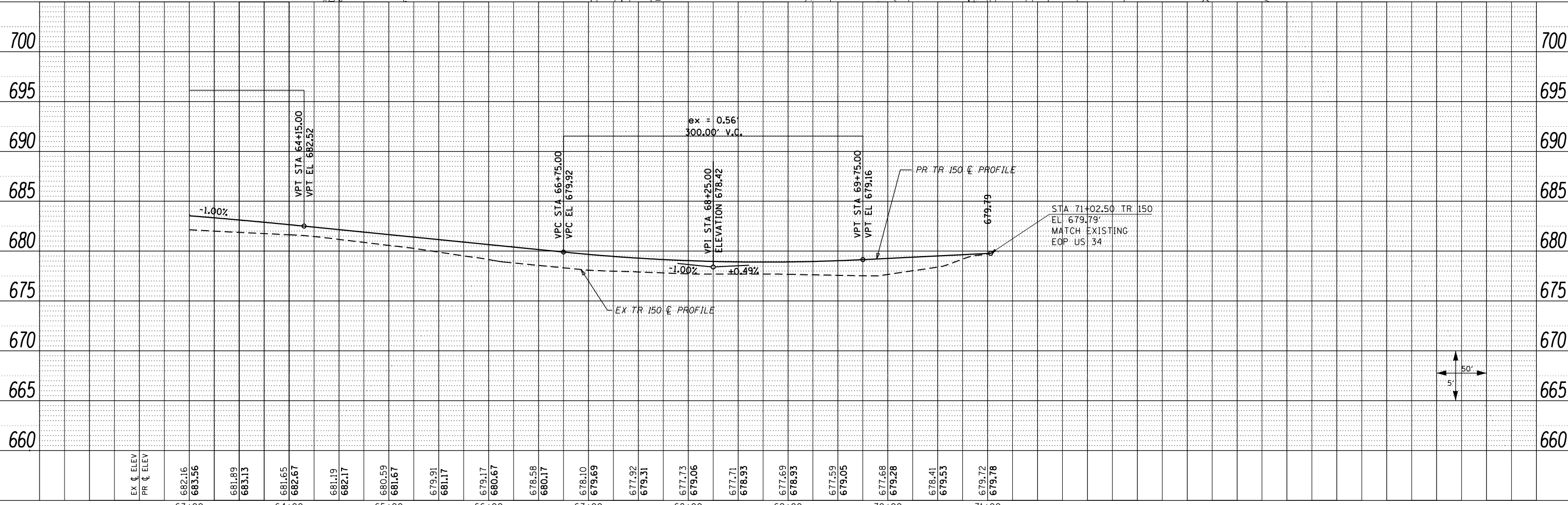
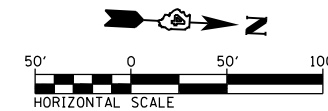


PROPOSED R.O.W.

1. 67+62.15
40.00 RT
2. 69+42.12
40.00 RT
3. 69+60.00
40.00 RT
4. 69+60.00
30.00 RT
5. 70+24.00
30.00 RT
6. 70+24.00
33.00 RT
7. 70+54.64
33.00 RT

TEMPORARY EASEMENT

8. 68+40.00
40.00 RT
9. 68+40.00
66.37 RT
10. 69+12.00
66.82 RT
11. 69+12.00
88.00 RT
12. 69+42.21
88.00 RT
13. 69+60.00
88.00 RT
14. 70+24.00
48.00 RT
15. 70+66.00
48.00 RT
16. 70+66.00
122.09 RT
17. 70+81.06
122.01 RT



FILE NAME =	USER NAME = zech1	DESIGNED - DBS	REVISED -	STATE OF ILLINOIS DEPARTMENT OF TRANSPORTATION	ROADWAY PLAN AND PROFILE TR 150 (1700 E)	F.A.P. RTE.	SECTION	COUNTY	TOTAL SHEETS	SHEET NO.	
D468409-SHT-51-PLNPRF-TR150-03.dgn		DRAWN - PSBA	REVISED -			313	7-2 ; 6-1	HENDERSON	976	185	
		CHECKED - CSB	REVISED -			CONTRACT NO. 68409					
		DATE - 10/2012	REVISED -			ILLINOIS FED. AID PROJECT					

SCALE: 1" = 50' SHEET NO. 51 OF 67 SHEETS STA. 63+00 TO STA. 71+02.50