

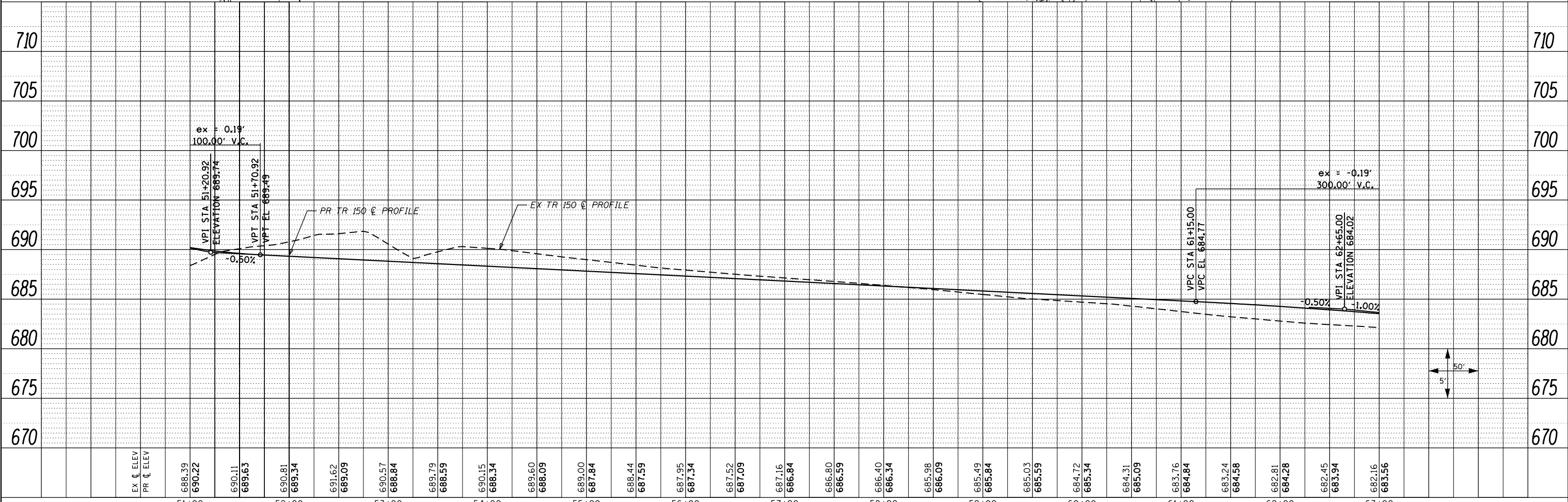
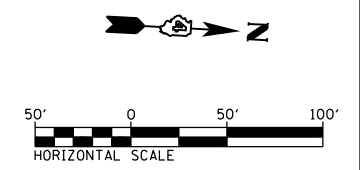
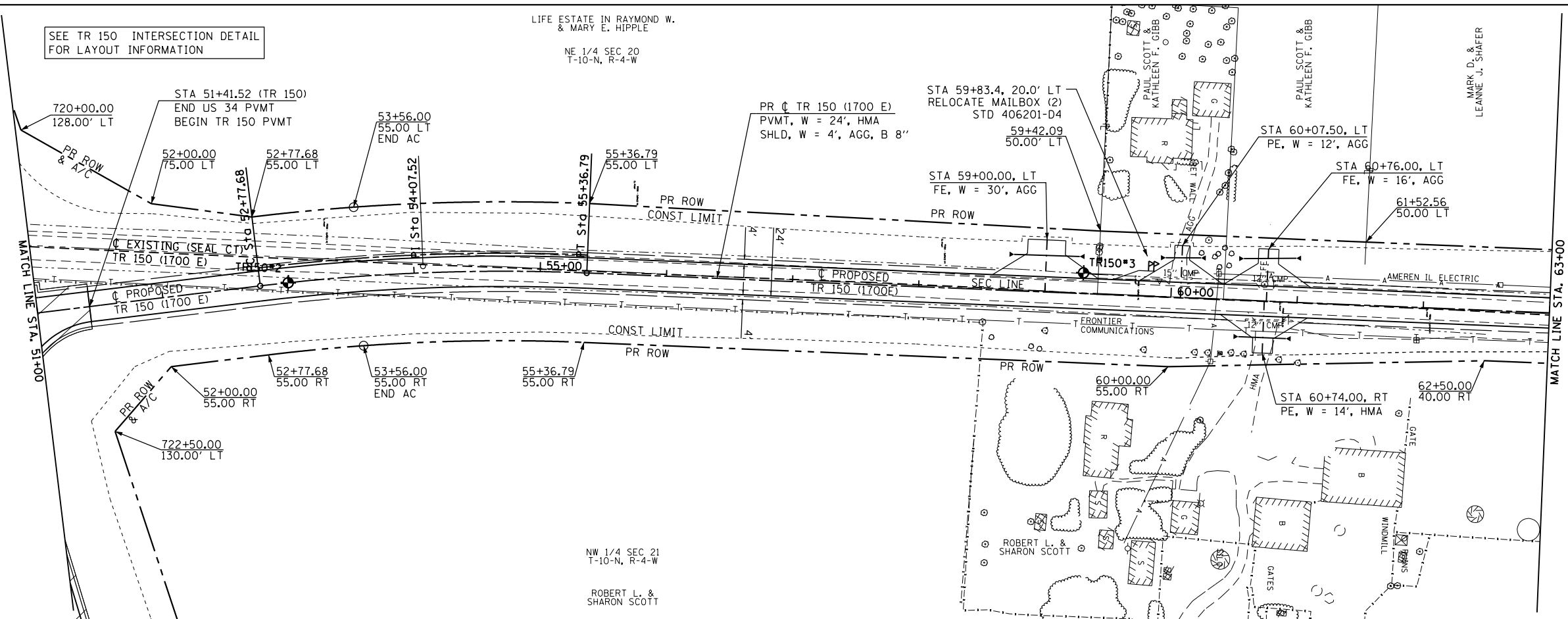
PLAN	SURVEYED	DATE
	PLOTTED	BY
	GRADES CHECKED	
	STRUCTURE NOTATIONS OK'D	
	NOTE BOOK NO.	
	FILE NAME	

PROFILE	SURVEYED	DATE
	PLOTTED	BY
	GRADES CHECKED	
	STRUCTURE NOTATIONS OK'D	
	NOTE BOOK NO.	
	FILE NAME	

PROP. CURVE TR150-3
 PI STA. = 54+07.52
 $\Delta = 9^\circ 16' 43''$ (RT)
 $D = 3^\circ 34' 52''$
 $R = 1,600.00'$
 $T = 129.84'$
 $L = 259.11'$
 $e = 5.26'$
 $e = 4.20\%$ (50 MPH)
 $T.R. = 54'$
 $S.E. RUN = 150'$
 $P.C. STA. = 52+77.68$
 $P.T. STA. = 55+36.79$

SEE TR 150 INTERSECTION DETAIL FOR LAYOUT INFORMATION

LIFE ESTATE IN RAYMOND W. & MARY E. HIPPLE
 NE 1/4 SEC 20
 T-10-N, R-4-W



FILE NAME =	USER NAME = zech1	DESIGNED - DBS	REVISED -	STATE OF ILLINOIS DEPARTMENT OF TRANSPORTATION	ROADWAY PLAN AND PROFILE		F.A.P. R.T.E.	SECTION	COUNTY	TOTAL SHEETS	SHEET NO.
D468409-SHT-50-PLNPRF-TR150-02.dgn		DRAWN - PSBA	REVISED -		TR 150 (1700 E)		313	7-2 ; 6-1	HENDERSON	976	184
		CHECKED - CSB	REVISED -		SCALE: 1" = 50'		SHEET NO. 50 OF 67 SHEETS		CONTRACT NO. 68409		
		DATE - 10/16/2012	REVISED -		STA. 51+00 TO STA. 63+00		ILLINOIS FED. AID PROJECT				