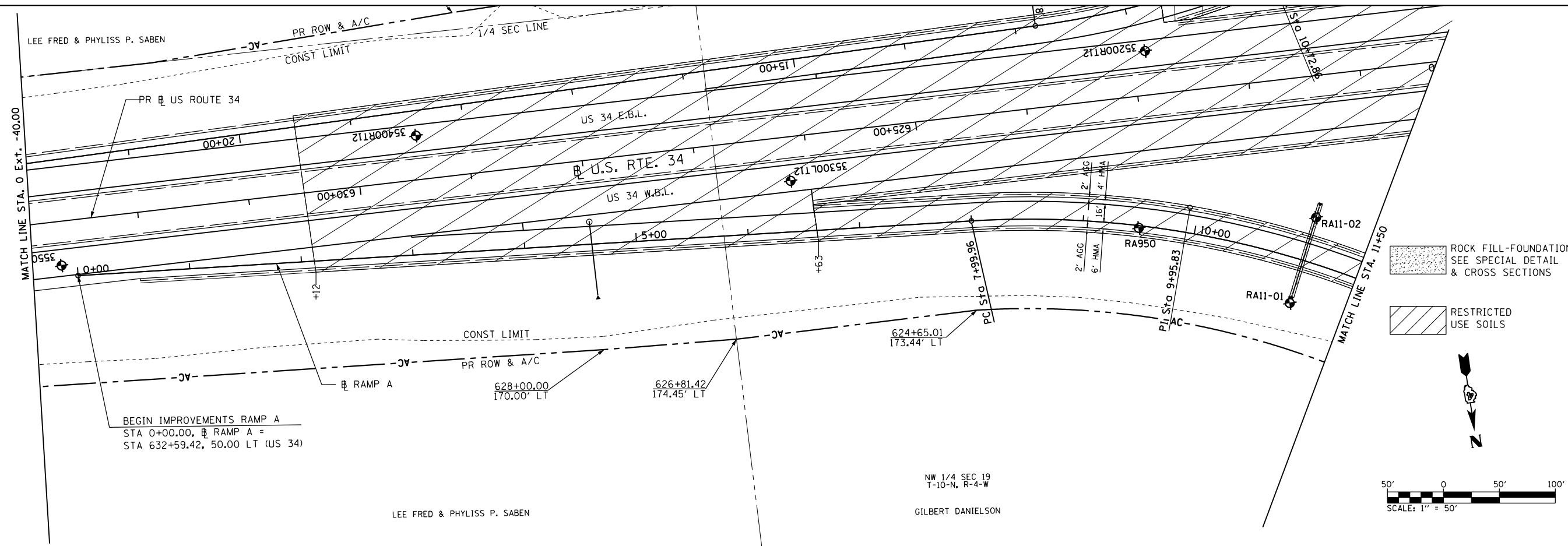


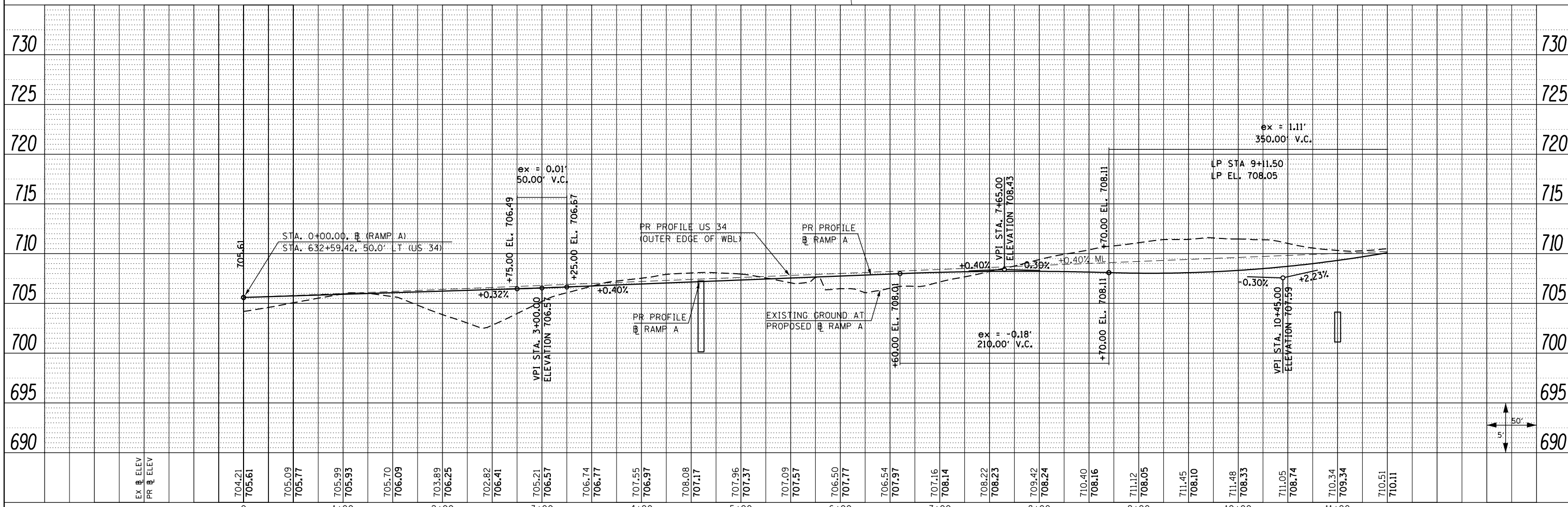
DATE	
BY	
PLAN	SURVEYED
	PLOTTED
	NOTE BOOK
	NO.
	CHECKED
	FILE NAME

SEE US ROUTE 34
PLAN & PROFILE SHEET
FOR LAYOUT INFORMATION

PROP. CURVE RAMP A-1
PI STA. = 9+95.83
 $\Delta = 26^\circ 24' 12''$ (RT)
 $D = 6^\circ 51' 42''$
 $R = 835.00'$
 $T = 195.87'$
 $L = 384.79'$
 $E = 22.67'$
 $e = 6.0\%$ (50 MPH)
T.R. = N/A
S.E. RUN = 207'
P.C. STA. = 7+99.96
P.T. STA. = 11+84.75



DATE	
BY	
PROFILE	SURVEYED
	PLOTTED
	GRADES CHECKED
	STRUCTURE NOTATIONS CHECKED
	NO.



FILE NAME = 0468409-SHT-36-PLNPRF-RAMPA-01.dgn	USER NAME = zech1	DESIGNED - DBS	REVISED -	STATE OF ILLINOIS DEPARTMENT OF TRANSPORTATION	ROADWAY PLAN & PROFILE RAMP A		F.A.P. RTE. 313	SECTION 7-2 ; 6-2	COUNTY HENDERSON	TOTAL SHEETS 976	SHEET NO. 170	
PLOT SCALE = 100.0000' / 1" =	CHECKED - CSB	REVISED -	REVISED -		SCALE: 1" = 50'	SHEET NO. 36 OF 67 SHEETS	STA. 0+00 TO STA. 11+50	CONTRACT NO. 68409		ILLINOIS FED. AID PROJECT		
PLOT DATE = 10/16/2012	DATE = 10/2012	REVISED -	REVISED -									