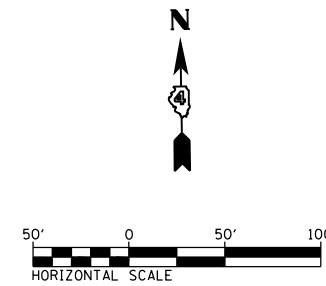
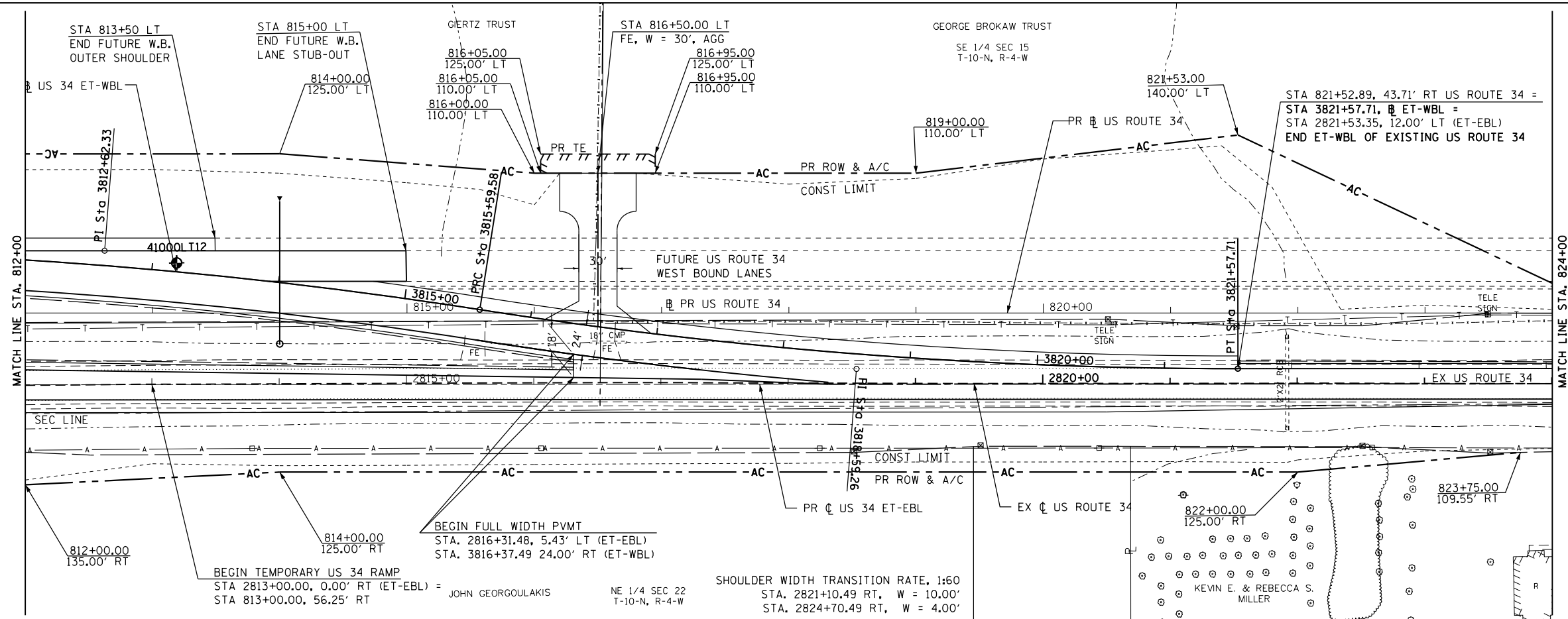


DATE	
BY	
PLAN	
NO.	
NO.	
NO.	
NO.	

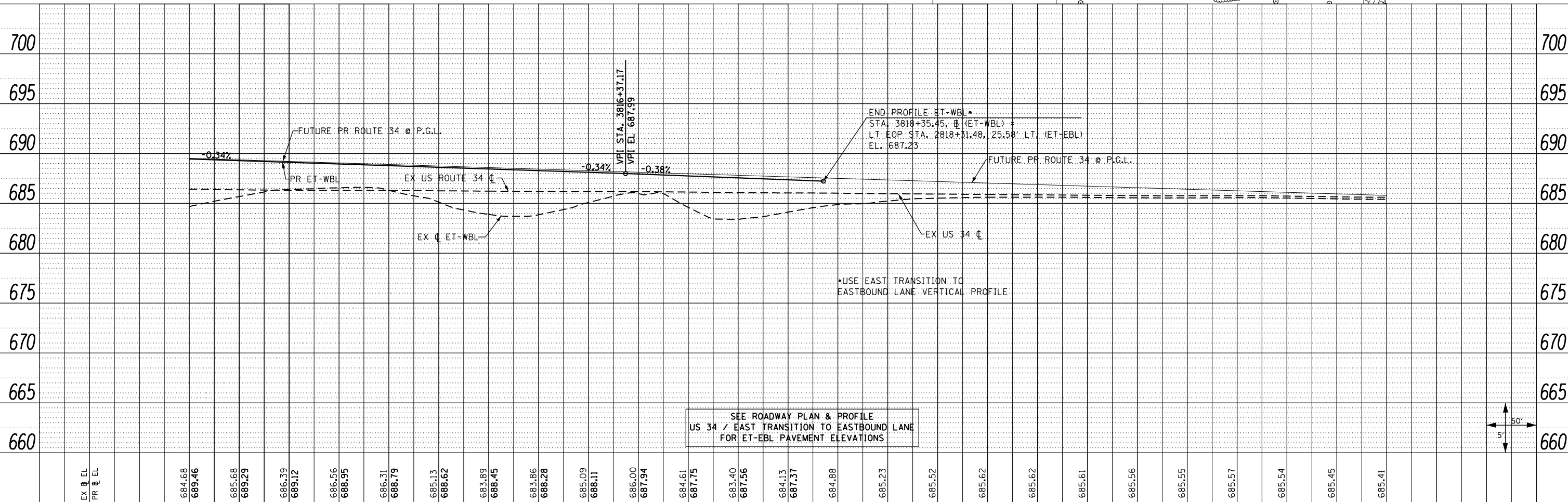
PROP. CURVE ET-WBL-1
 PI STA. = 3812+62.33
 $\Delta = 8^\circ 56' 06''$ (RT)
 $D = 1^\circ 30' 00''$
 $R = 3,820.00'$
 $T = 298.46'$
 $L = 595.70'$
 $E = 11.64'$
 $e = NC$ (60 MPH)
 T.R. = N/A
 S.E. RUN = N/A
 P.C. STA. = 3809+63.87
 P.T. STA. = 3815+59.58

PROP. CURVE ET-WBL-2
 PI STA. = 3818+59.26
 $\Delta = 8^\circ 58' 17''$ (LT)
 $D = 1^\circ 30' 00''$
 $R = 3,820.00'$
 $T = 299.68'$
 $L = 598.13'$
 $E = 11.74'$
 $e = NC$ (60 MPH)
 T.R. = N/A
 S.E. RUN = N/A
 P.C. STA. = 3815+59.58
 P.T. STA. = 3821+57.71

ET-WBL = EAST TRANSITION TO WESTBOUND LANE
 ET-EBL = EAST TRANSITION TO EASTBOUND LANE



DATE	
BY	
PROFILE	
NO.	
NO.	
NO.	
NO.	



EX @ EL	684.68	685.68	686.39	686.56	686.31	685.13	683.89	683.86	685.09	686.00	684.61	683.40	684.13	684.88	685.23	685.62	685.62	685.61	685.56	685.55	685.57	685.54	685.45	685.41
PR @ EL	689.46	689.29	689.12	688.95	688.79	688.62	688.45	688.28	688.11	687.94	687.75	687.56	687.37	687.18	687.01	686.82	686.62	686.41	686.20	686.00	685.79	685.58	685.37	685.16
US 34 ET WBL	3812+00	3813+00	3814+00	3815+00	3816+00	3817+00	3818+00	3819+00	3820+00	3821+00	3822+00	3823+00	3824+00											