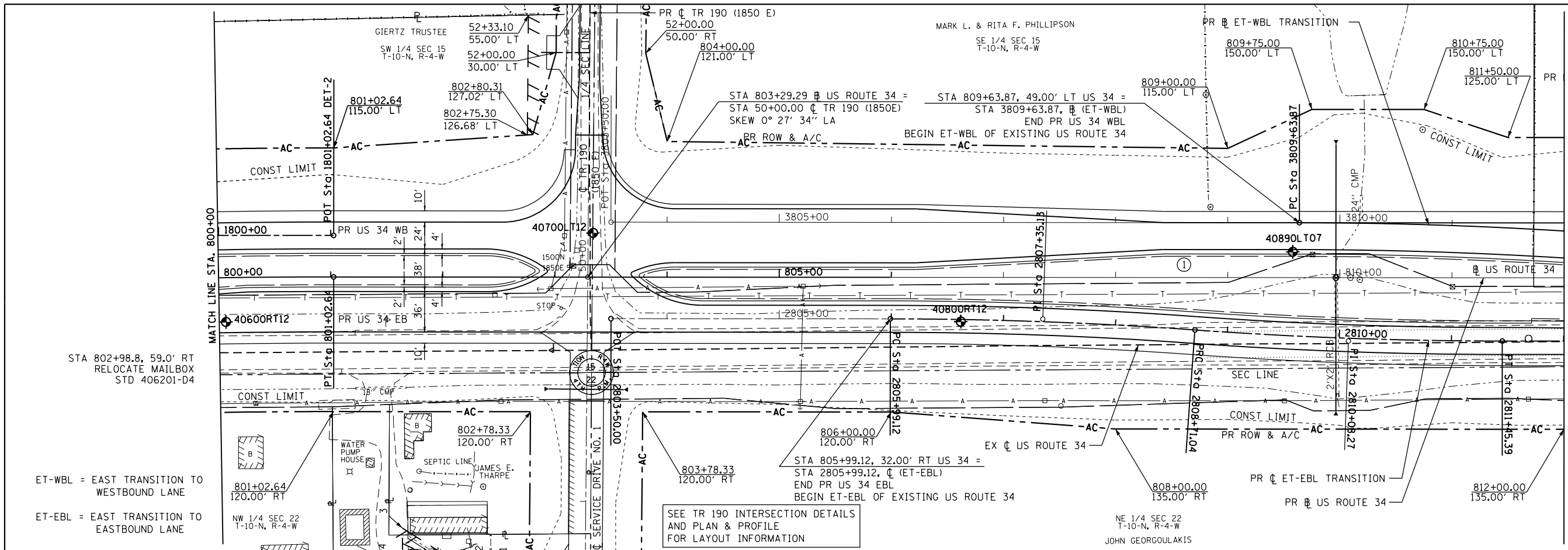


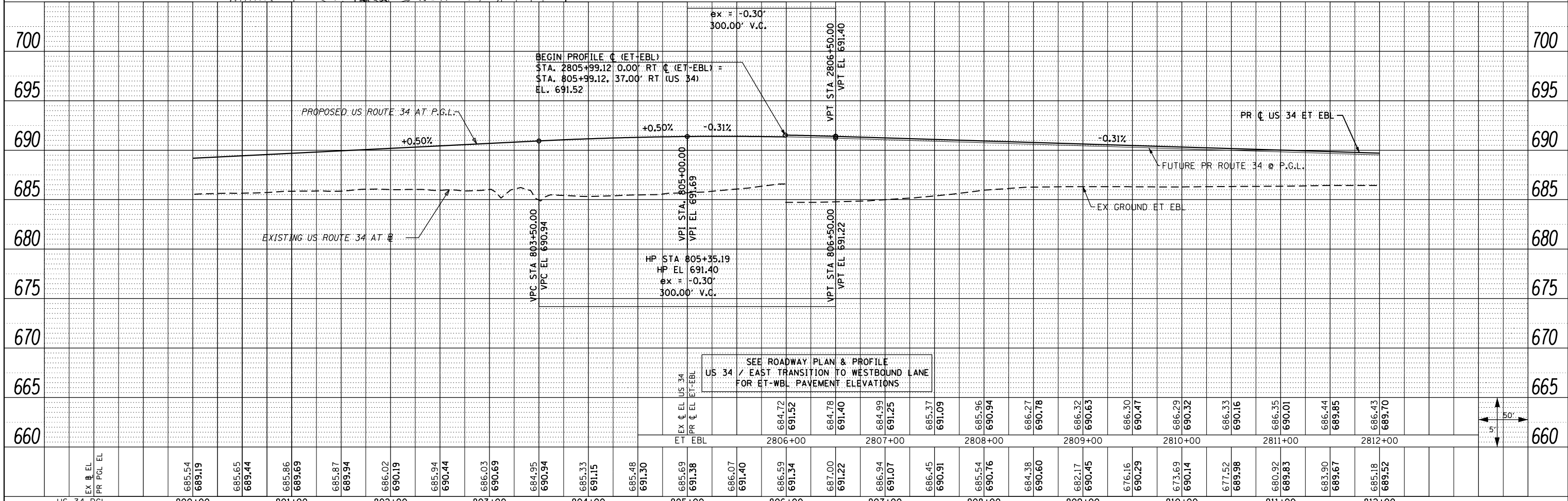
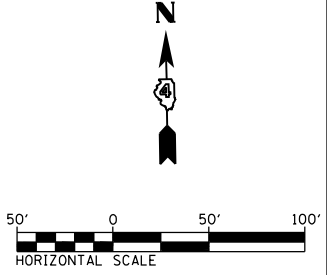
PLAN	SURVEYED	DATE
	PLOTTED	
	ALIGNED	
	CHECKED	
	FILED	
	NO.	

PROFILE	SURVEYED	DATE
	PLOTTED	
	GRADES	
	CHECKED	
	STRUCTURE	
	NOTATIONS	
	CHKD	
	NO.	



PROP. CURVE ET-EBL-1
 PI STA. = 2807+35.13
 $\Delta = 4^\circ 04' 43''$ (RT)
 $D = 1^\circ 30' 00''$
 $R = 3,820.0'$
 $L = 271.92'$
 $E = 2.42'$
 $e = NC$ (60 MPH)
 T.R. = N/A
 S.E. RUN = N/A
 P.C. STA. = 2805+99.12
 P.T. STA. = 2808+71.04

PROP. CURVE ET-EBL-2
 PI STA. = 2810+08.27
 $\Delta = 4^\circ 06' 54''$ (LT)
 $D = 1^\circ 30' 00''$
 $R = 3,820.0'$
 $L = 274.35'$
 $E = 2.46'$
 $e = NC$ (60 MPH)
 T.R. = N/A
 S.E. RUN = N/A
 P.C. STA. = 2808+71.04
 P.T. STA. = 2811+45.39



FILE NAME =	USER NAME = zech1	DESIGNED - DBS	REVISED -	ROADWAY PLAN AND PROFILE		F.A.P. RT. = 313	SECTION = 7-2 ; 6-1	COUNTY = HENDERSON	TOTAL SHEETS = 976	SHEET NO. = 161
D468409-shr-27-plnprf-US34-025E.dgn		DRAWN - PSBA	REVISED -	US ROUTE 34 - EAST TRANSITION TO EASTBOUND LANE				CONTRACT NO. 68409		
	PLOT SCALE = 100.0000' / 1"	CHECKED - CSB	REVISED -	SCALE: 1"=50'	SHEET NO. 27 OF 67 SHEETS	STA. 800+00 TO STA. 812+00		ILLINOIS FED. AID PROJECT		
	PLOT DATE = 10/16/2012	DATE = 10/2012	REVISED -							