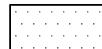
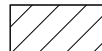
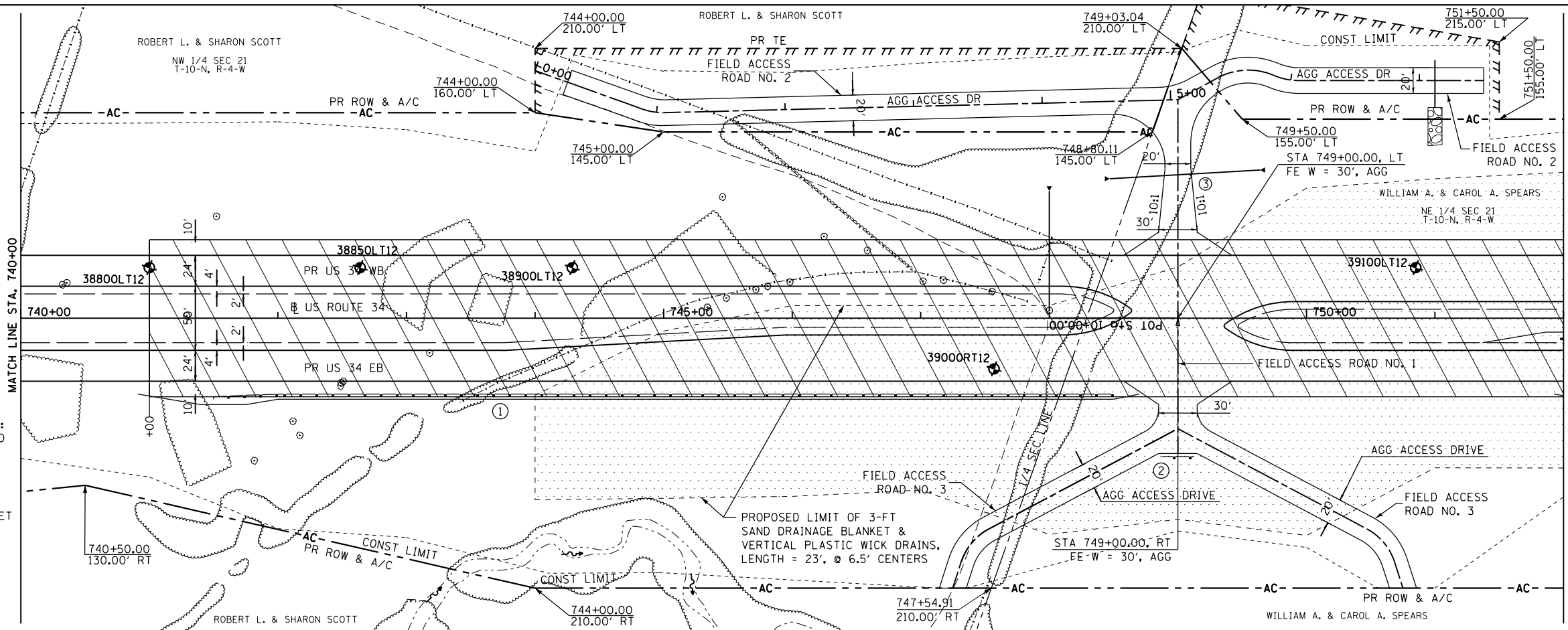


PLAN	SURVEYED	BY	DATE
	PLOTTED		
	NOTE BOOK		
	NO.		

PROFILE	SURVEYED	BY	DATE
	GRADES CHECKED		
	STRUCTURE NOTATIONS CHECKED		
	NO.		

SAND DRAINAGE BLANKET AND VERTICAL PLASTIC DRAINAGE WICKS; SEE CROSS SECTION FOR ESTIMATED LIMITS. ACTUAL LIMITS WILL BE DETERMINED BY ENGINEER.

-  SAND DRAINAGE BLANKET & VERT WICK DRAINS
-  RESTRICTED USE SOILS



- ① STA 741+50.00, 59.00' RT. TO STA 748+50.00, 59.00' RT.
1 - TR BAR TRM T1 SPL TAN
687.50' SPBGR TY A
1 - TRAF BAR TERM T2
 - ② STA 748+87.50, 107.55' RT. TO STA 749+12.50, 107.55' RT.
25.00' SPBGR TY A
- SEE SPECIAL DETAILS FOR FIELD ACCESS ROADS



FILE NAME =	USER NAME = zech1	DESIGNED - DBS	REVISED -	STATE OF ILLINOIS DEPARTMENT OF TRANSPORTATION	ROADWAY PLAN AND PROFILE		F.A.P. RT. = 313	SECTION = 7-2 ; 6-1	COUNTY = HENDERSON	TOTAL SHEETS = 976	SHEET NO. = 155
D468409-sh-21-plnprf-US34-20.dgn		DRAWN - PSBA	REVISED -		US ROUTE 34		CONTRACT NO. 68409		ILLINOIS FED. AID PROJECT		
		CHECKED - CSB	REVISED -		SCALE: 1"=50'	SHEET NO. 21 OF 67 SHEETS	STA. 740+00 TO STA. 752+00				
		DATE - 10/2012	REVISED -								