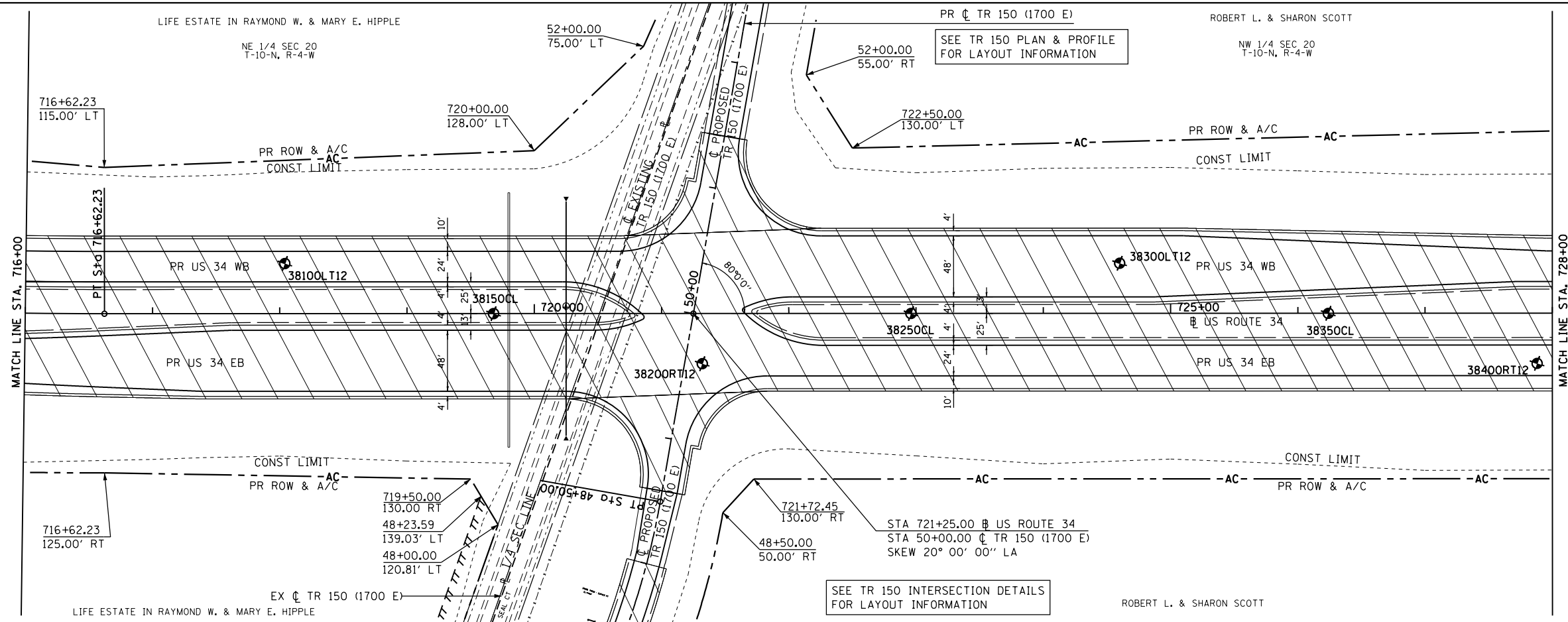
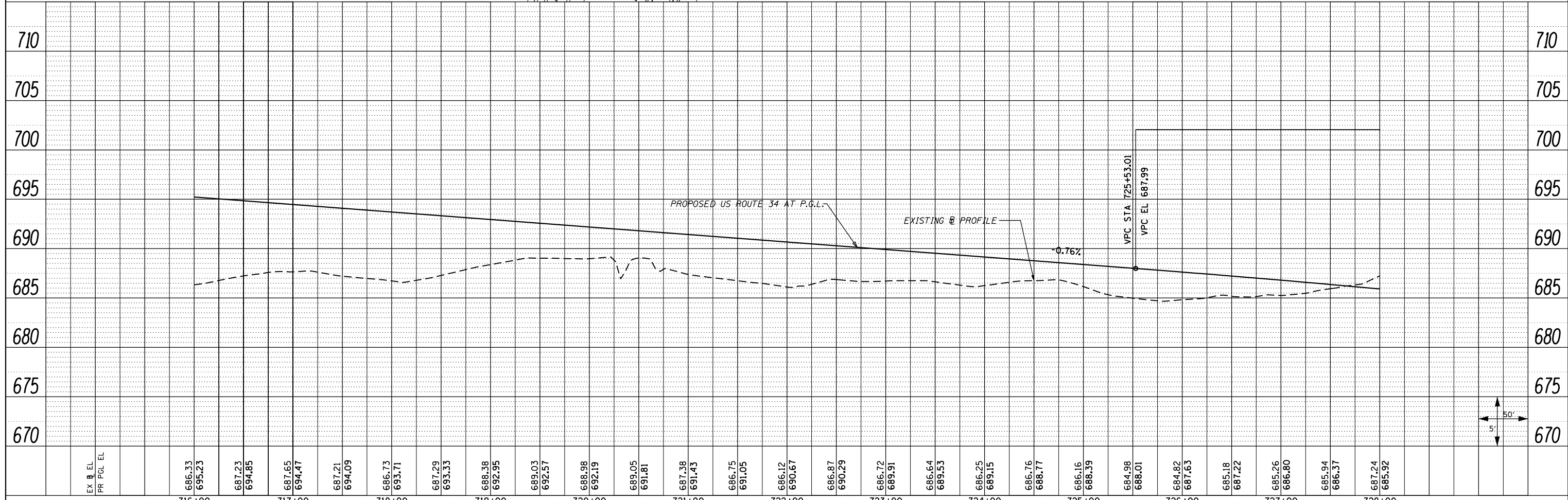


PROP. CURVE US34-10
 PI STA. = 708+60.68
 $\Delta = 20^\circ 15' 08''$ (LT)
 $D = 1^\circ 15' 00''$
 $R = 4,583.66'$
 $T = 818.63'$
 $L = 1,620.18'$
 $E = 72.53'$
 $e = 4.00\%$
 $T.R. = 42'$
 $S.E. RUN = 180'$
 $P.C. STA. = 700+42.05$
 $P.T. STA. = 716+62.23$

PLAN	SURVEYED	BY	DATE
	PLOTTED		
	NOTE BOOK		
	NO.		
	CHECKED		
	FILE NAME		
	NO.		



PROFILE	SURVEYED	BY	DATE
	PLOTTED		
	GRADES CHECKED		
	STRUCTURE		
	NOT AT THIS OFFICE		
	NO.		



FILE NAME =	USER NAME = zechl	DESIGNED -	DBS	REVISED -	
D468409-sh-19-plnprf-US34-18.dgn		DRAWN -	PSBA	REVISED -	
		CHECKED -	CSB	REVISED -	
		DATE -	10/2012	REVISED -	

STATE OF ILLINOIS
 DEPARTMENT OF TRANSPORTATION

ROADWAY PLAN AND PROFILE
 US ROUTE 34

SCALE: 1"=50' SHEET NO. 19 OF 67 SHEETS STA. 716+00 TO STA. 728+00

F.A.P. RTE.	SECTION	COUNTY	TOTAL SHEETS	SHEET NO.
313	7-2 ; 6-1	HENDERSON	976	153
CONTRACT NO. 68409			ILLINOIS FED. AID PROJECT	