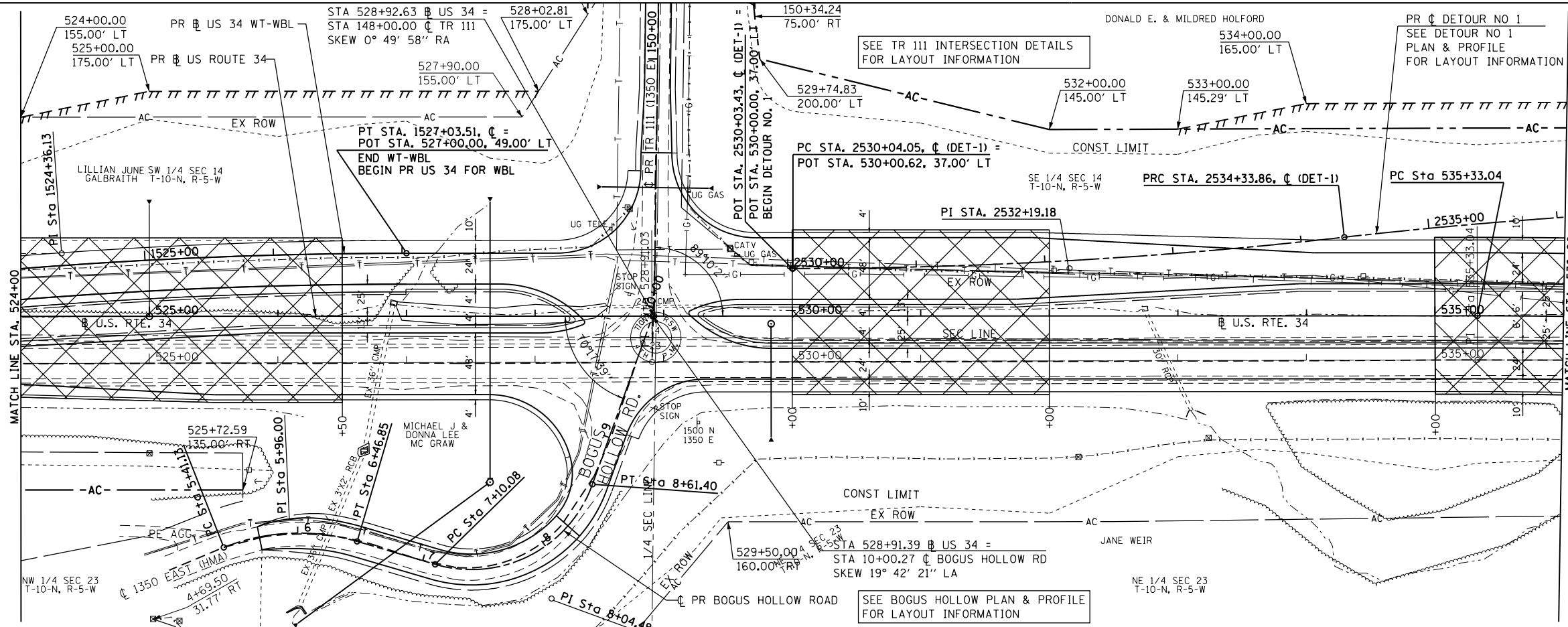


PLAN	SURVEYED	DATE
	PLOTTED	
	ALIGNED	
	CHECKED	
	FILED	
	NO.	

PROP. CURVE WT-WLT-2  
 PI STA. = 1524+36.13  
 $\Delta = 8^{\circ} 02' 02''$  (RT)  
 $D = 1^{\circ} 30' 00''$   
 $R = 3,820.00'$   
 $T = 268.26'$   
 $L = 535.64'$   
 $E = 9.41'$   
 $e = N.C. (60 MPH)$   
 $T.R. = N.A.$   
 $S.E. RUN = N.A.$   
 $P.C. STA. = 1521+67.87$   
 $P.T. STA. = 1527+03.51$

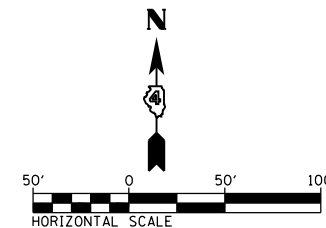
PROP. CURVE DET-1-1  
 PI STA. = 2532+19.18  
 $\Delta = 6^{\circ} 26' 48''$  (LT)  
 $D = 1^{\circ} 30' 00''$   
 $R = 3,820.00'$   
 $T = 215.13'$   
 $L = 429.81'$   
 $E = 6.05'$   
 $e = N.C. (60 MPH)$   
 $T.R. = N.A.$   
 $S.E. RUN = N.A.$   
 $P.C. STA. = 2530+04.05$   
 $P.T. STA. = 2534+33.86$



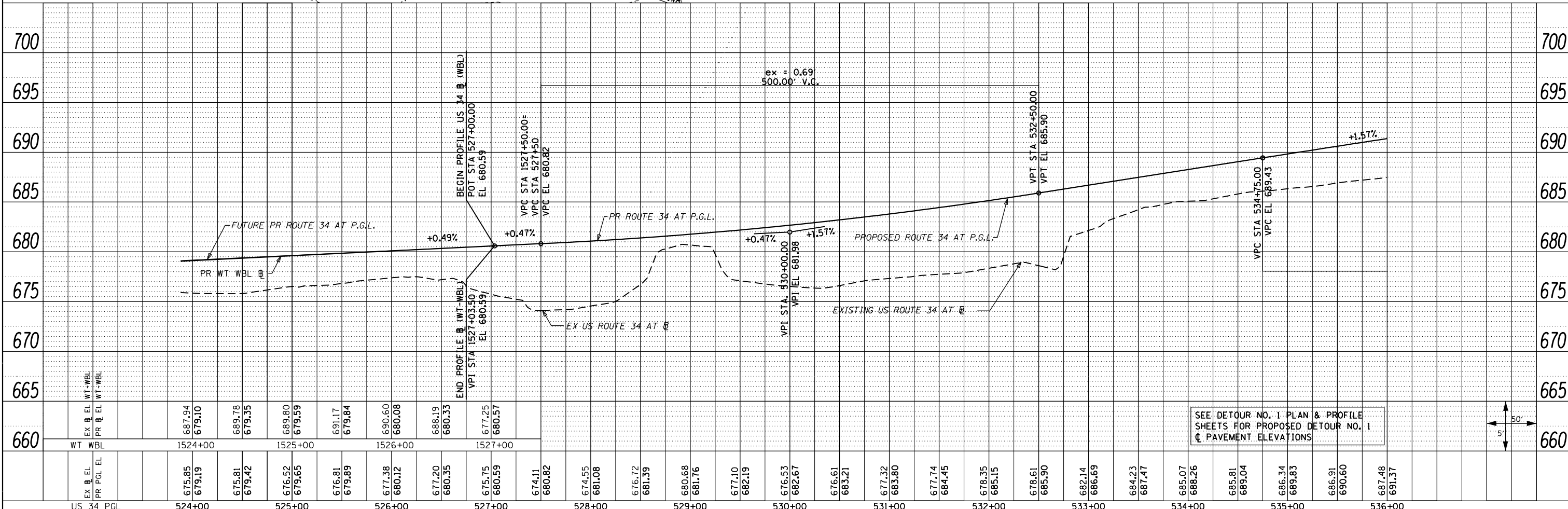
WT-WBL = WEST TRANSITION TO WESTBOUND LANE  
 WT-EBL = WEST TRANSITION TO EASTBOUND LANE

REMOVAL AND DISPOSAL OF UNSUITABLE MATERIAL LIMITS SHOWN ARE ESTIMATED. EXACT LIMITS TO BE DETERMINED BY THE ENGINEER.

REMOVAL AND DISPOSAL OF UNSUITABLE MATERIALS



PROFILE	SURVEYED	DATE
	PLOTTED	
	GRADES CHECKED	
	STRUCTURE NOTATIONS CHECKED	
	NO.	



FILE NAME = 0468409-sh-03-plnprf-US34-02.dgn	USER NAME = danw	DESIGNED - DBS	REVISED -	<b>STATE OF ILLINOIS</b> <b>DEPARTMENT OF TRANSPORTATION</b> <b>ROADWAY PLAN AND PROFILE</b> <b>US ROUTE 34</b>	F.A.P. RTE. 313	SECTION 7-2 ; 6-1	COUNTY HENDERSON	TOTAL SHEETS 976	SHEET NO. 137	
PLOT SCALE = 100.0000' / 1"	CHECKED - CSB	REVISED -	REVISED -		SCALE: 1"=50'	SHEET NO. 3 OF 67 SHEETS	STA. 524+00 TO STA. 536+00	CONTRACT NO. 68409	ILLINOIS FED. AID PROJECT	
PLOT DATE = 11/14/2012	DATE - 10/2012	REVISED -	REVISED -							