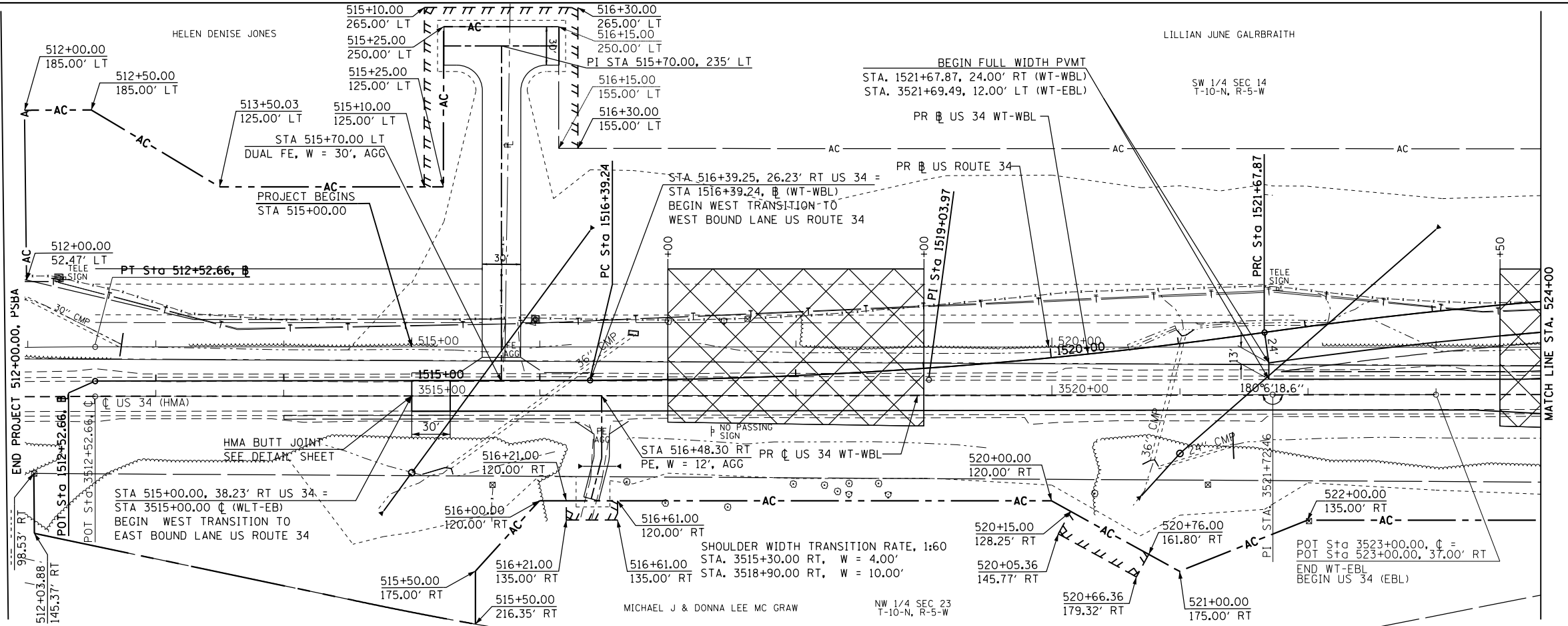


PLAN	SURVEYED	DATE
	PIOTTED	
	GRADES CHECKED	
	STRUCTURE NOTATIONS CHECKED	
NOTE BOOK NO.	FILE NAME	

PROFILE	SURVEYED	DATE
	PIOTTED	
	GRADES CHECKED	
	STRUCTURE NOTATIONS CHECKED	
NOTE BOOK NO.	FILE NAME	

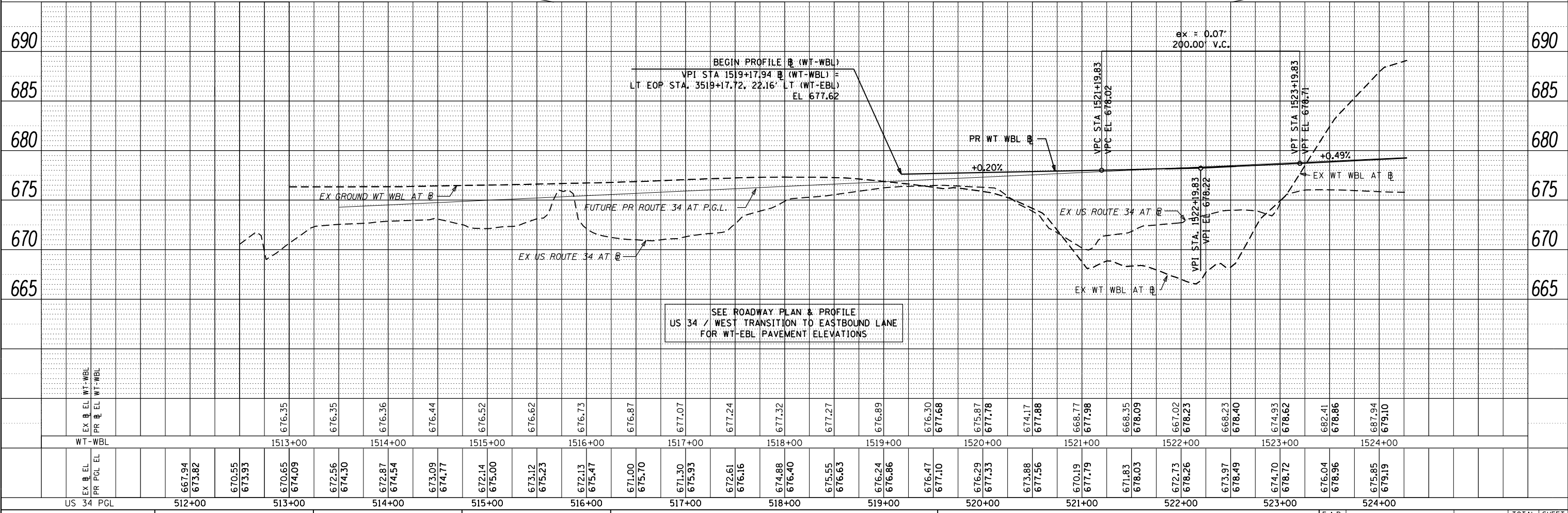
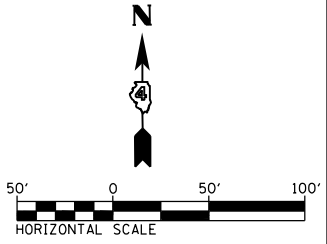
 UNSUITABLE SOILS



WT-WBL = WEST TRANSITION TO WESTBOUND LANE
WT-EBL = WEST TRANSITION TO EASTBOUND LANE

PROP. CURVE WT-WLT-1
PI STA. = 1519+03.97
 $\Delta = 7^\circ 55' 44''$ (LT)
D = $1^\circ 30' 00''$
R = 3,820.00'
T = 264.74'
L = 528.63'
E = 9.16'
e = N.C. (60 MPH)
T.R. = N.A.
S.E. RUN = N.A.
P.C. STA. = 1516+39.24
P.T. STA. = 1521+67.87

PROP. CURVE WT-WLT-2
PI STA. = 1524+36.13
 $\Delta = 8^\circ 02' 02''$ (RT)
D = $1^\circ 30' 00''$
R = 3,820.00'
T = 268.26'
L = 535.64'
E = 9.41'
e = N.C. (60 MPH)
T.R. = N.A.
S.E. RUN = N.A.
P.C. STA. = 1521+67.87
P.T. STA. = 1527+03.51



SEE ROADWAY PLAN & PROFILE
US 34 / WEST TRANSITION TO EASTBOUND LANE
FOR WT-EBL PAVEMENT ELEVATIONS

FILE NAME =	USER NAME = zachl	DESIGNED - DBS	REVISED -	STATE OF ILLINOIS DEPARTMENT OF TRANSPORTATION	ROADWAY PLAN AND PROFILE US ROUTE 34 - WEST TRANSITION TO WESTBOUND LANE	F.A.P. RTE. =	SECTION	COUNTY	TOTAL SHEETS	SHEET NO.	
D468409-sh-02-plnprf-US34-01W.dgn		DRAWN - PSBA	REVISED -			313	7-2 ; 6-1	HENDERSON	976	136	
		CHECKED - CSB	REVISED -			CONTRACT NO. 68409					
		DATE - 10/2012	REVISED -			ILLINOIS FED. AID PROJECT					