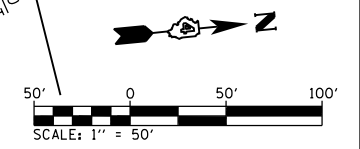
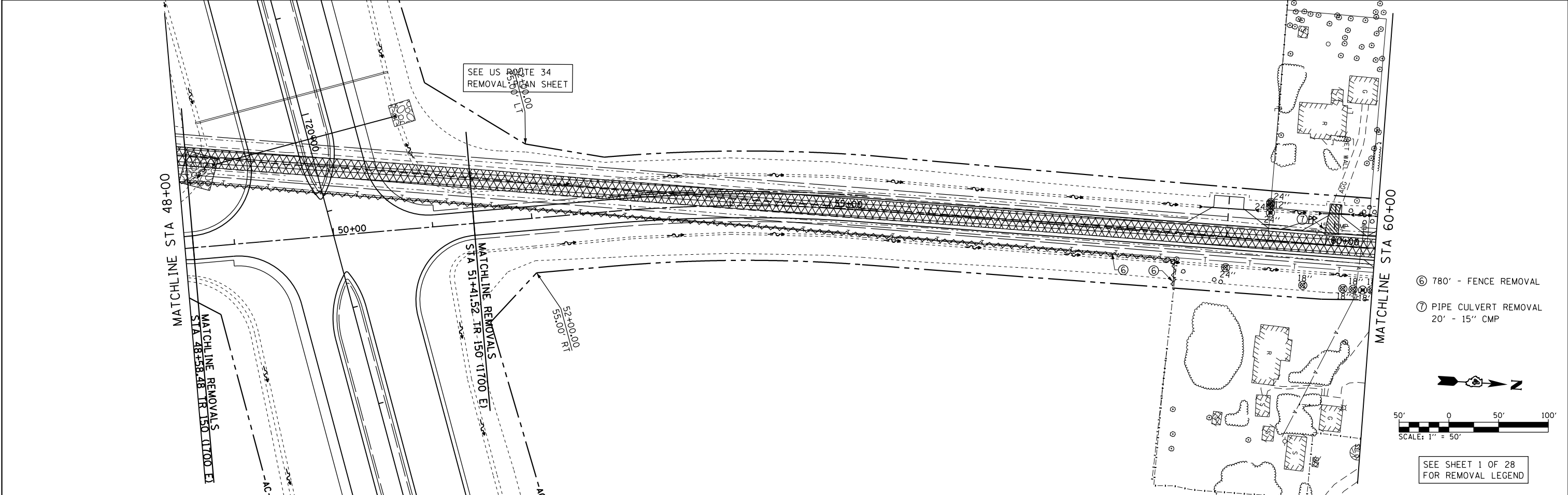


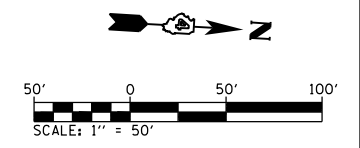
- ① PIPE CULVERT REMOVAL
34' - 15" CMP
- ② PIPE CULVERT REMOVAL
26' - 24" CMP
- ③ 440' - FENCE REMOVAL
- ④ 100' - FENCE REMOVAL
- ⑤ 380' - FENCE REMOVAL



SEE SHEET 1 OF 28
FOR REMOVAL LEGEND



- ⑥ 780' - FENCE REMOVAL
- ⑦ PIPE CULVERT REMOVAL
20' - 15" CMP



SEE SHEET 1 OF 28
FOR REMOVAL LEGEND

FILE NAME = D468409-SHT-REM-023-TR150.dgn	USER NAME = zach1	DESIGNED - DBS	REVISED -	STATE OF ILLINOIS DEPARTMENT OF TRANSPORTATION	REMOVAL PLAN TR 150 (1700 E)	SCALE: 1" = 50'	SHEET NO. 23 OF 28 SHEETS	STA. 40+00 TO STA. 60+00	F.A.P. RTE. 313	SECTION 7-2; 6-1	COUNTY HENDERSON	TOTAL SHEETS 976	SHEET NO. 129		
PLOT SCALE = 100.0000' / in.		CHECKED - CSB	REVISED -			CONTRACT NO. 68409				ILLINOIS FED. AID PROJECT					
PLOT DATE = 10/16/2012		DATE - 10/2012	REVISED -												