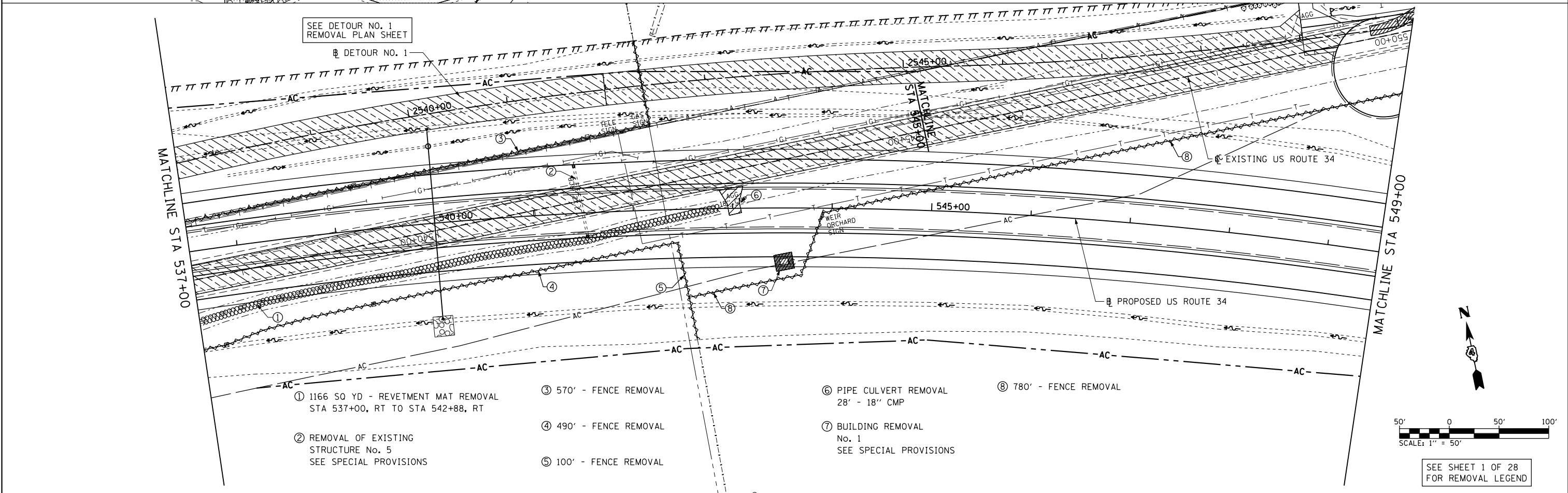


- ① 360' - FENCE REMOVAL
- ② REMOVAL OF EXISTING STRUCTURE No. 2 SEE SPECIAL PROVISIONS
- ③ PIPE CULVERT REMOVAL 74' - 24" CMP
- ④ 900' - FENCE REMOVAL
- ⑤ REMOVAL OF EXISTING STRUCTURE No. 3 SEE SPECIAL PROVISIONS
- ⑥ 780' - FENCE REMOVAL
- ⑦ REMOVAL OF EXISTING STRUCTURE No. 4 SEE SPECIAL PROVISIONS
- ⑧ 180 SQ YD - REVETMENT MAT REMOVAL STA 536+90, RT TO STA 537+00, RT



- ① 1166 SQ YD - REVETMENT MAT REMOVAL STA 537+00, RT TO STA 542+88, RT
- ② REMOVAL OF EXISTING STRUCTURE No. 5 SEE SPECIAL PROVISIONS
- ③ 570' - FENCE REMOVAL
- ④ 490' - FENCE REMOVAL
- ⑤ 100' - FENCE REMOVAL
- ⑥ PIPE CULVERT REMOVAL 28' - 18" CMP
- ⑦ BUILDING REMOVAL No. 1 SEE SPECIAL PROVISIONS
- ⑧ 780' - FENCE REMOVAL

FILE NAME = D468409-SHT-REM-02-US34.dgn	USER NAME = zachl	DESIGNED - DBS	REVISED -	<b>STATE OF ILLINOIS DEPARTMENT OF TRANSPORTATION</b>	<b>REMOVAL PLANS US ROUTE 34</b>			F.A.P. RTE. 313	SECTION 7-2 ; 6-1	COUNTY HENDERSON	TOTAL SHEETS 976	SHEET NO. 108
		DRAWN - PSBA	REVISED -		SCALE: SHEET NO. 2 OF 28 SHEETS STA. 525+00 TO STA. 549+00			CONTRACT NO. 68409				
		CHECKED - CSB	REVISED -		ILLINOIS FED. AID PROJECT							
		DATE - 10/2012	REVISED -									