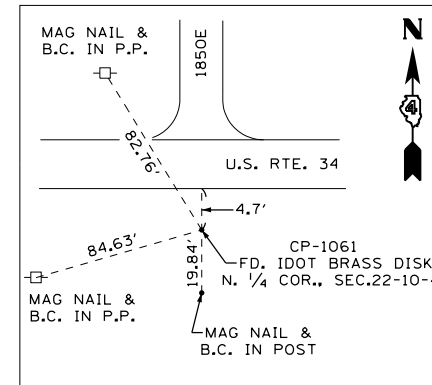


ALIGNMENT COORDINATES - TR 190 (1850E)			
ALIGNMENT COORDINATES - SERVICE DRIVE 1			
TR 190	STATION	N	E
POT	40+00.00	1523592.4857	2111529.1936
PI	50+00.00	1524592.1936	2111553.3633
POT	59+00.00	1525491.9307	2111575.1160

ALIGNMENT COORDINATES - PR U.S. 34			
U.S.34	STATION	N	E
PI	803+29.29	1524592.1936	2111553.3633
POT	844+03.96	1524526.3152	2115627.4985

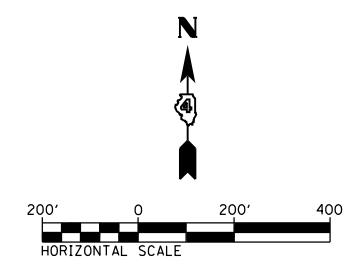
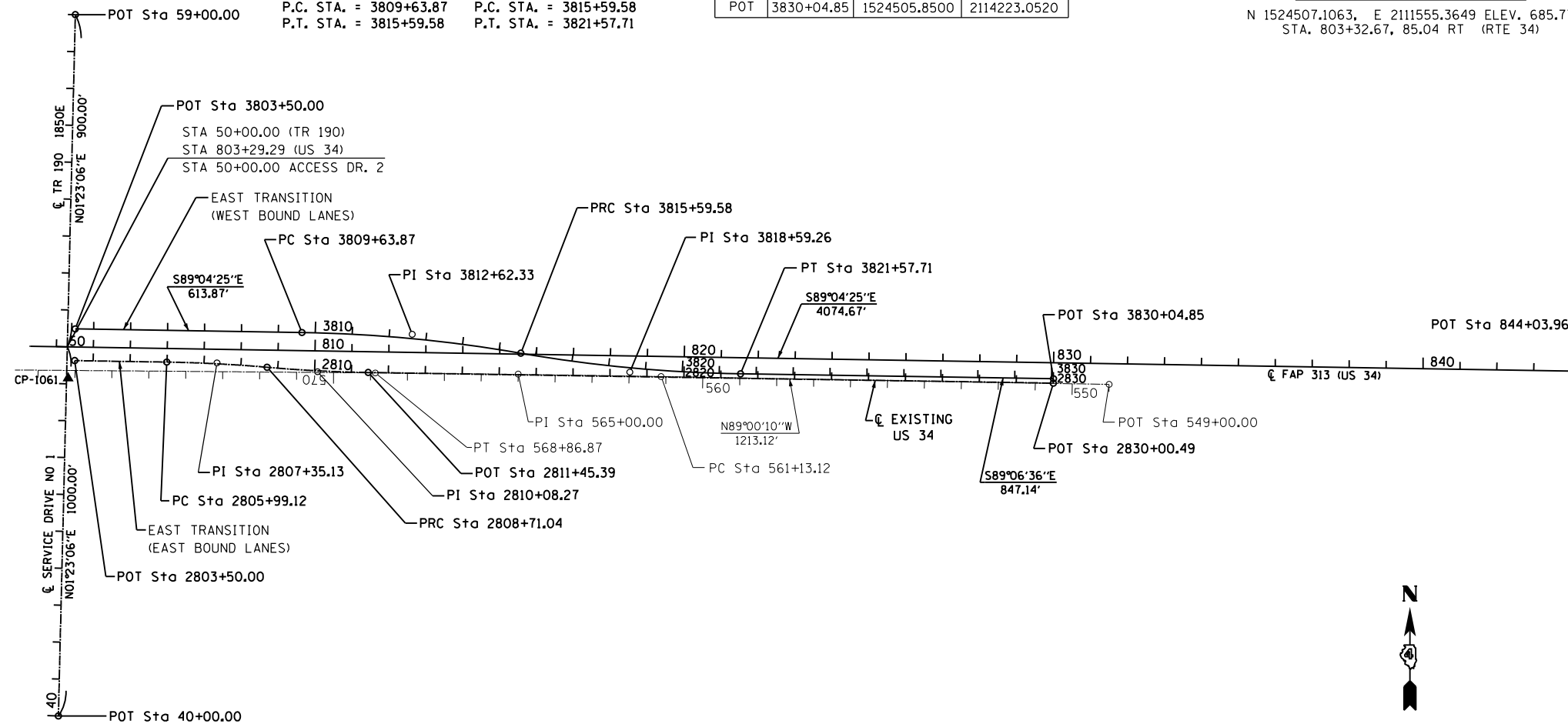


CONTROL POINT #1061
 N 1524507.1063, E 2111555.3649 ELEV. 685.77
 STA. 803+32.67, 85.04 RT (RTE 34)

ALIGNMENT COORDINATES - ET-WBL			
U.S.34	STATION	N	E
POT	3803+50.00	1524640.8524	2111574.8612
PC	3809+63.87	1524630.9274	2112188.6538
PI	3812+62.33	1524626.1020	2112487.0723
PRC	3815+59.58	1524574.9871	2112781.1201
PI	3818+59.26	1524523.6631	2113076.3706
PT	3821+57.71	1524519.0083	2113376.0126
POT	3830+04.85	1524505.8500	2114223.0520

PROP. CURVE ELT-WB-1
 PI STA. = 3812+62.33
 $\Delta = 8^\circ 56' 06''$ (RT)
 $D = 1^\circ 30' 00''$
 $R = 3,820.00'$
 $T = 298.46'$
 $L = 595.70'$
 $E = 11.64'$
 $e = NC$ (60 MPH)
 $T.R. = N/A$
 $S.E. RUN = N/A$
 $P.C. STA. = 3809+63.87$
 $P.T. STA. = 3815+59.58$

PROP. CURVE ELT-WB-2
 PI STA. = 3818+59.26
 $\Delta = 8^\circ 58' 17''$ (LT)
 $D = 1^\circ 30' 00''$
 $R = 3,820.00'$
 $T = 299.68'$
 $L = 598.13'$
 $E = 11.74'$
 $e = NC$ (60 MPH)
 $T.R. = N/A$
 $S.E. RUN = N/A$
 $P.C. STA. = 3815+59.58$
 $P.T. STA. = 3821+57.71$



PROP. CURVE ELT-EB-1
 PI STA. = 2807+35.13
 $\Delta = 4^\circ 04' 43''$ (RT)
 $D = 1^\circ 30' 00''$
 $R = 3,820.00'$
 $T = 136.02'$
 $L = 271.92'$
 $E = 2.42'$
 $e = NC$ (60 MPH)
 $T.R. = N/A$
 $S.E. RUN = N/A$
 $P.C. STA. = 2805+99.12$
 $P.T. STA. = 2808+71.04$

PROP. CURVE ELT-EB-2
 PI STA. = 2810+08.27
 $\Delta = 4^\circ 06' 54''$ (LT)
 $D = 1^\circ 30' 00''$
 $R = 3,820.00'$
 $T = 137.23'$
 $L = 274.35'$
 $E = 2.46'$
 $e = NC$ (60 MPH)
 $T.R. = N/A$
 $S.E. RUN = N/A$
 $P.C. STA. = 2808+71.04$
 $P.T. STA. = 2811+45.39$

ALIGNMENT COORDINATES - ET-EBL			
U.S.34	STATION	N	E
POT	2803+50.00	1524554.8637	2111573.4707
PC	2805+99.12	1524550.8360	2111822.5535
PI	2807+35.13	1524548.6368	2111958.5546
PRC	2808+71.04	1524536.7703	2112094.0550
PI	2810+08.27	1524524.7978	2112230.7658
PT	2811+45.39	1524522.6661	2112367.9834
POT	2830+0049	1524493.8514	2114222.8656

FILE NAME = D468409-SHT-ATB-07.dgn	USER NAME = zachl	DESIGNED - KEF	REVISED -
		DRAWN - PSBA	REVISED -
		CHECKED - CSB	REVISED -
		DATE - 10/2012	REVISED -

STATE OF ILLINOIS
 DEPARTMENT OF TRANSPORTATION

ALIGNMENT TIES AND BENCHMARKS
 US ROUTE 34
 SCALE: 1" = 200'
 SHEET NO. 7 OF 8 SHEETS
 STA. 801+00 TO STA. 844+03.96

F.A.P. RTE.	SECTION	COUNTY	TOTAL SHEETS	SHEET NO.
313	7-2; 6-1	HENDERSON	976	105
CONTRACT NO. 68409				
ILLINOIS FED. AID PROJECT				