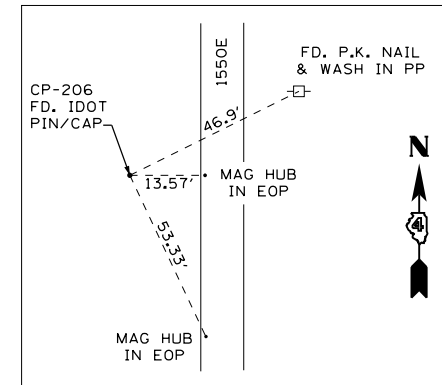


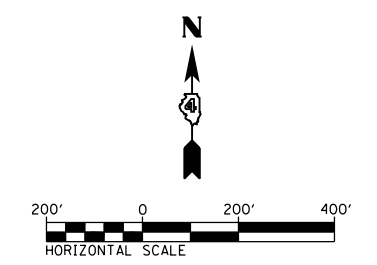
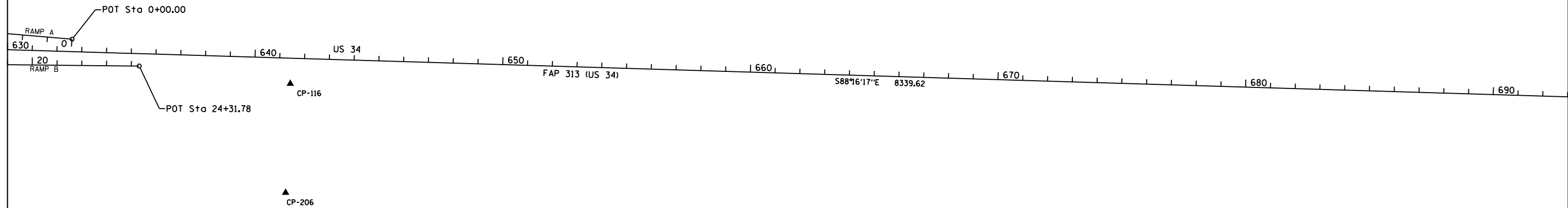
CONTROL POINT #116

N 1522086.1690, E 2095760.9080 ELEV. 698.80
641+45.00, 102.46' RT (RTE 34)



CONTROL POINT #206

N 1521647.0540, E 2095742.4940 ELEV. 704.72
641+39.84, 541.93' RT (RTE 34)



FILE NAME = D468409-SHT-ATB-04.dgn	USER NAME = zach1	DESIGNED - KEF	REVISED -
		DRAWN - PSBA	REVISED -
	PLOT SCALE = 400.0000' / in.	CHECKED - CSB	REVISED -
	PLOT DATE = 10/16/2012	DATE - 10/2012	REVISED -

**STATE OF ILLINOIS
DEPARTMENT OF TRANSPORTATION**

**ALIGNMENT TIES AND BENCHMARKS
US ROUTE 34**

SCALE: 1" = 200' SHEET NO. 4 OF 8 SHEETS STA. 630+00 TO STA. 693+00

F.A.P. RTE.	SECTION	COUNTY	TOTAL SHEETS	SHEET NO.
313	7-2; 6-1	HENDERSON	976	102
CONTRACT NO. 68409				
ILLINOIS FED. AID PROJECT				