

| ALIGNMENT COORDINATES - PR U.S. 34 |           |              |              |
|------------------------------------|-----------|--------------|--------------|
| U.S.34                             | STATION   | N            | E            |
| POT                                | 477+51.71 | 1523840.1950 | 2079957.4330 |
| PC                                 | 497+53.61 | 1524518.9869 | 2081840.7397 |
| PI                                 | 505+10.93 | 1524775.7745 | 2082553.1959 |
| PT                                 | 512+52.66 | 1524771.8868 | 2083310.5059 |
| PI                                 | 528+91.39 | 1524763.4754 | 2084949.2102 |
| PI                                 | 528+92.63 | 1524763.4690 | 2084950.4550 |

| ALIGNMENT COORDINATES - BOGUS HOLLOW RD |          |              |              |
|---|----------|--------------|--------------|
| BHR                                     | STATION  | N            | E            |
| PC                                      | 5+41.13  | 1524585.5160 | 2084614.7190 |
| PI                                      | 5+96.00  | 1524605.3260 | 2084665.8910 |
| PT                                      | 6+46.85  | 1524589.5609 | 2084718.4502 |
| PC                                      | 7+10.08  | 1524571.3950 | 2084779.0140 |
| PI                                      | 8+04.48  | 1524544.2760 | 2084869.4290 |
| PT                                      | 8+61.40  | 1524632.9781 | 2084901.7130 |
| POT                                     | 10+00.27 | 1524763.4754 | 2084949.2102 |

| ALIGNMENT COORDINATES - STRAND TR 111 (1350E) |           |              |              |
|---|-----------|--------------|--------------|
| TR 111  | STATION   | N            | E            |
| POT   | 148+00.00 | 1524763.4690 | 2084950.4550 |
| POT   | 155+00.00 | 1525463.3330 | 2084964.2220 |

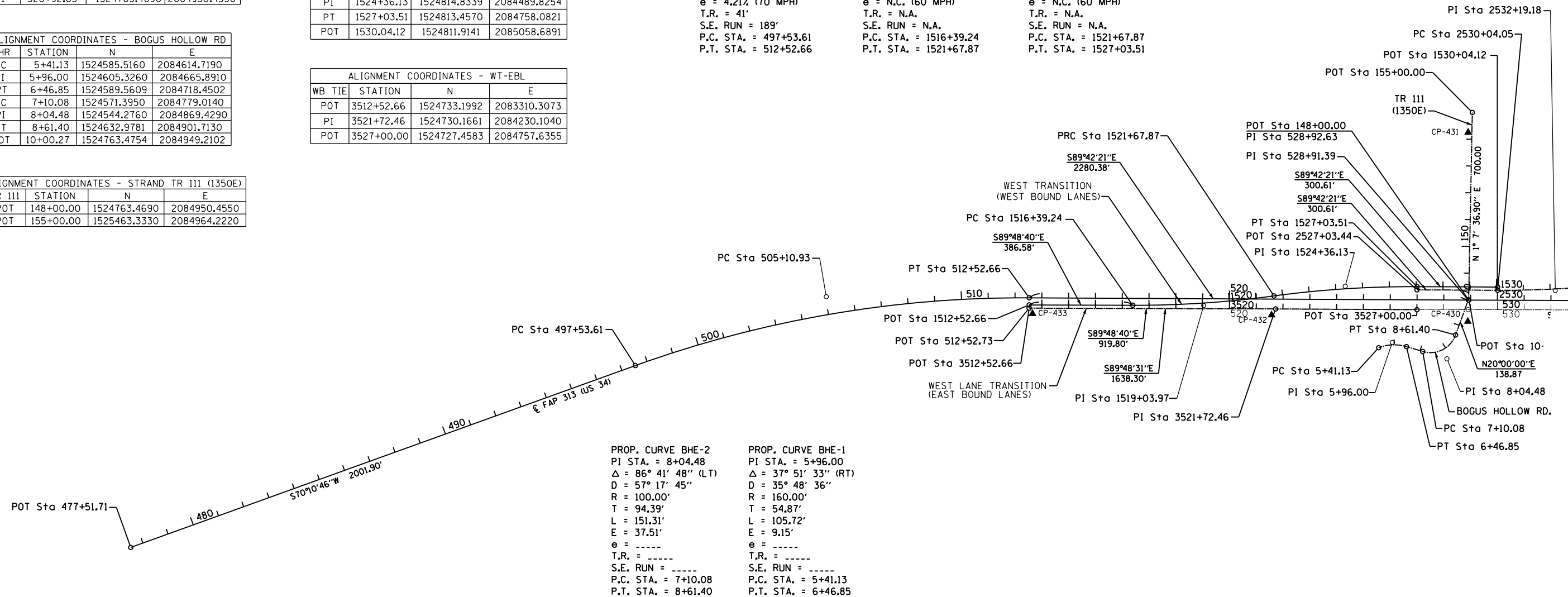
| ALIGNMENT COORDINATES - WT-WBL |            |              |              |
|--------------------------------|------------|--------------|--------------|
| WB TIE                         | STATION    | N            | E            |
| POT                            | 1512+52.66 | 1524745.1990 | 2083310.3720 |
| PC                             | 1516+39.24 | 1524743.9242 | 2083696.9463 |
| PI                             | 1519+03.97 | 1524743.0513 | 2083961.6829 |
| PRC                            | 1521+67.87 | 1524778.7054 | 2084224.0090 |
| PI                             | 1524+36.13 | 1524814.8339 | 2084489.8254 |
| PT                             | 1527+03.51 | 1524813.4570 | 2084758.0821 |
| POT                            | 1530.04.12 | 1524811.9141 | 2085058.6891 |

| ALIGNMENT COORDINATES - WT-EBL |            |              |              |
|--------------------------------|------------|--------------|--------------|
| WB TIE                         | STATION    | N            | E            |
| POT                            | 3512+52.66 | 1524733.1992 | 2083310.3073 |
| PI                             | 3521+72.46 | 1524730.1661 | 2084230.1040 |
| POT                            | 3527+00.00 | 1524727.4583 | 2084757.6355 |

PROP. CURVE US34-7  
 PI STA. = 505+10.93  
 $\Delta = 20^{\circ} 06' 53''$  (RT)  
 $D = 1^{\circ} 20' 31''$   
 $R = 4,270.00'$   
 $T = 757.32'$   
 $L = 1,499.05'$   
 $E = 66.64'$   
 $e = 4.21\%$  (70 MPH)  
 $T.R. = 41'$   
 $S.E. RUN = 189'$   
 $P.C. STA. = 497+53.61$   
 $P.T. STA. = 512+52.66$

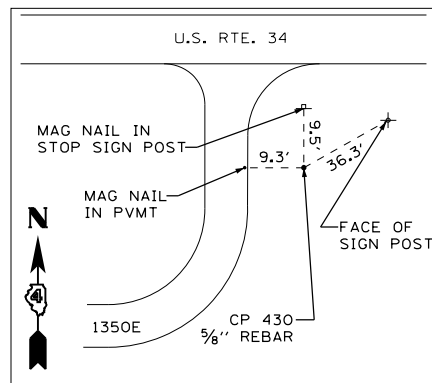
PROP. CURVE WLT-WB-1  
 PI STA. = 1519+03.97  
 $\Delta = 7^{\circ} 55' 44''$  (LT)  
 $D = 1^{\circ} 30' 00''$   
 $R = 3,820.00'$   
 $T = 264.74'$   
 $L = 528.63'$   
 $E = 9.16'$   
 $e = N.C.$  (60 MPH)  
 $T.R. = N.A.$   
 $S.E. RUN = N.A.$   
 $P.C. STA. = 1516+39.24$   
 $P.T. STA. = 1521+67.87$

PROP. CURVE WLT-WB-2  
 PI STA. = 1524+36.13  
 $\Delta = 8^{\circ} 02' 02''$  (RT)  
 $D = 1^{\circ} 30' 00''$   
 $R = 3,820.00'$   
 $T = 268.26'$   
 $L = 535.64'$   
 $E = 9.41'$   
 $e = N.C.$  (60 MPH)  
 $T.R. = N.A.$   
 $S.E. RUN = N.A.$   
 $P.C. STA. = 1521+67.87$   
 $P.T. STA. = 1527+03.51$

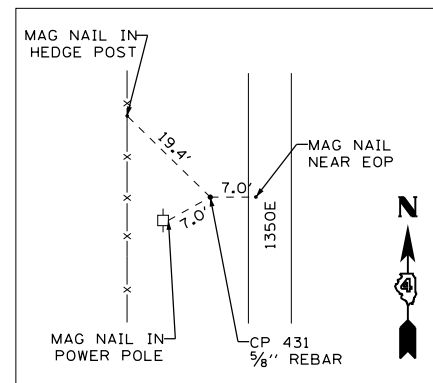


PROP. CURVE BHE-2  
 PI STA. = 8+04.48  
 $\Delta = 86^{\circ} 41' 48''$  (LT)  
 $D = 57^{\circ} 17' 45''$   
 $R = 100.00'$   
 $T = 94.39'$   
 $L = 151.31'$   
 $E = 37.51'$   
 $e =$  -----  
 $T.R. =$  -----  
 $S.E. RUN =$  -----  
 $P.C. STA. = 7+10.08$   
 $P.T. STA. = 8+61.40$

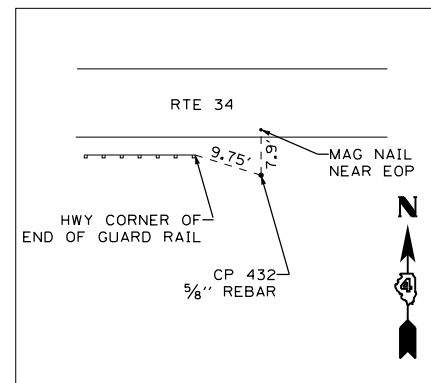
PROP. CURVE BHE-1  
 PI STA. = 5+96.00  
 $\Delta = 37^{\circ} 51' 33''$  (RT)  
 $D = 35^{\circ} 48' 36''$   
 $R = 160.00'$   
 $T = 54.87'$   
 $L = 105.72'$   
 $E = 9.15'$   
 $e =$  -----  
 $T.R. =$  -----  
 $S.E. RUN =$  -----  
 $P.C. STA. = 5+41.13$   
 $P.T. STA. = 6+46.85$



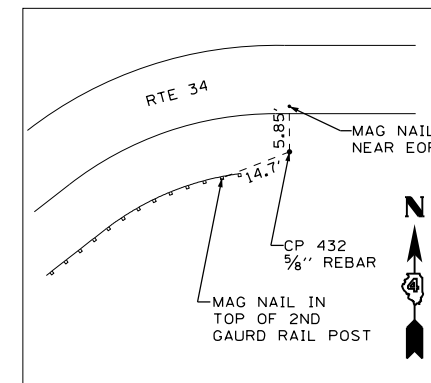
**CONTROL POINT #430**  
 N 1524683.3247, E 2084947.3098, ELEV. 679.86  
 STA. 528+89.90, 80.16' RT (RTE 34)  
 STA. 9+24.30, 25.63' RT (1350 E)



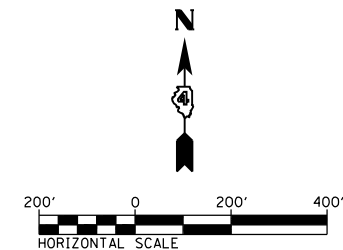
**CONTROL POINT #431**  
 N 1525388.7244, E 2084948.5785, ELEV. 697.06  
 STA. 528+87.55, 625.24' LT (RTE 34)  
 STA. 154+25.10, 14.17' LT (TR-111, 1350E)



**CONTROL POINT #432**  
 N 1524707.2398, E 2084215.1346, ELEV. 677.41  
 STA. 521+57.61, 60.00' RT (RTE 34)



**CONTROL POINT #433**  
 N 1524712.6967, E 2083322.3970, ELEV. 675.63  
 STA. 512+64.86, 59.13' RT (RTE 34)



|                                       |                   |                |           |
|---------------------------------------|-------------------|----------------|-----------|
| FILE NAME =<br>D468409-SHT-ATB-01.dgn | USER NAME = zach1 | DESIGNED - KEF | REVISED - |
|                                       |                   | DRAWN - PSBA   | REVISED - |
|                                       |                   | CHECKED - CSB  | REVISED - |
|                                       |                   | DATE - 10/2012 | REVISED - |

STATE OF ILLINOIS  
 DEPARTMENT OF TRANSPORTATION

| ALIGNMENT TIES AND BENCHMARKS |                         |
|-------------------------------|-------------------------|
| US ROUTE 34                   |                         |
| SCALE: 1" = 200'              | SHEET NO. 1 OF 8 SHEETS |
| STA. 477+51.71                | TO STA. 533+00          |

| F.A.P. RTE.               | SECTION  | COUNTY    | TOTAL SHEETS | SHEET NO. |
|---------------------------|----------|-----------|--------------|-----------|
| 313                       | 7-2; 6-1 | HENDERSON | 976          | 99        |
| CONTRACT NO. 68409        |          |           |              |           |
| ILLINOIS FED. AID PROJECT |          |           |              |           |