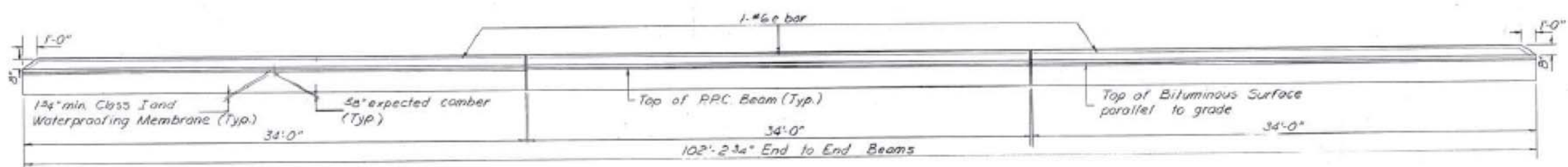
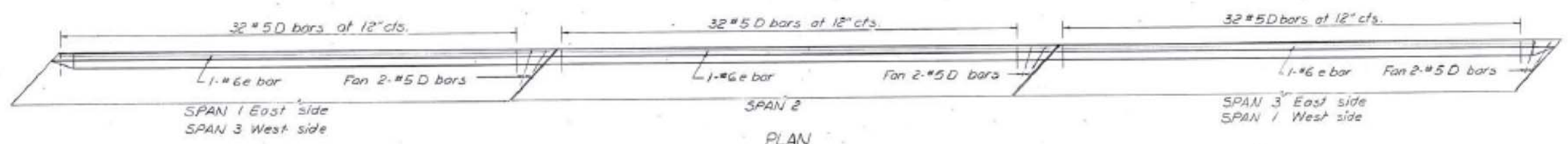


STATE OF ILLINOIS  
DEPARTMENT OF TRANSPORTATION

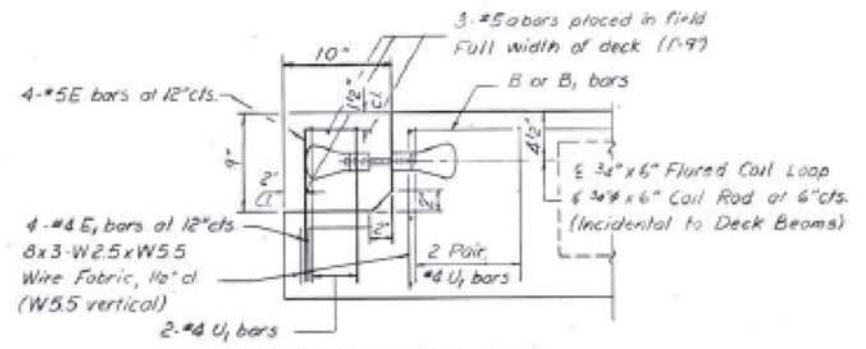
PROJECT NO.	SECTION	COUNTY	TOTAL SHEETS	SHEET NO.
796	106 BR-4	FORD	39	32
SHEETS 10				



**CURB ELEVATION AND BITUMINOUS SURFACE PROFILE**  
showing inside face of curb



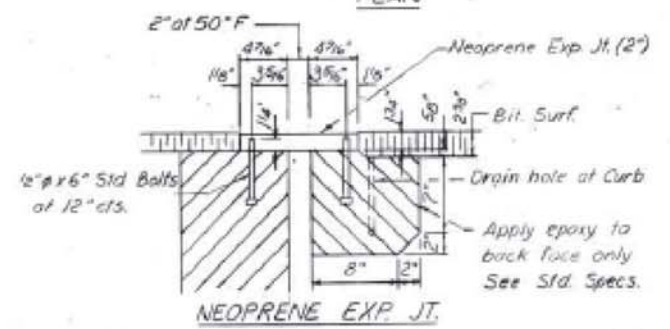
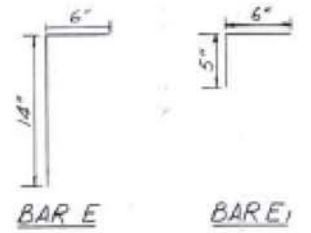
**PLAN**



**END OF BEAM (EXP. END)**

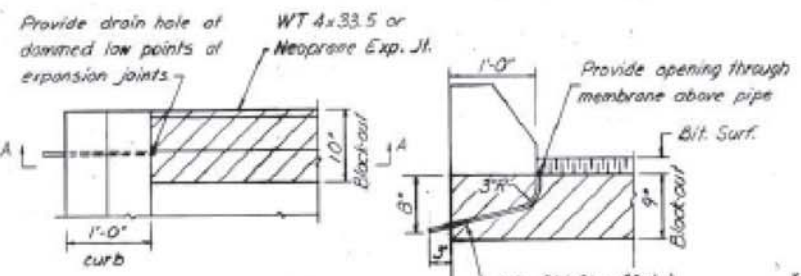
(Dimensions are at right angles)

NOTE: Transverse tie rods are not required at expansion ends of beams.



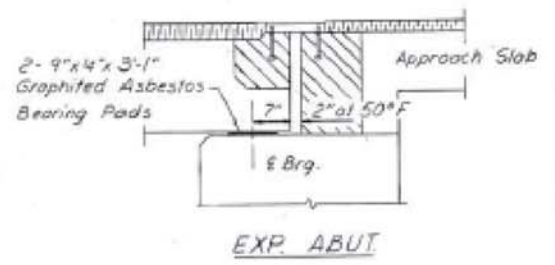
**NEOPRENE EXP. JT.**

NOTE: Ends of beams shall be aligned at the expansion joints. Any linear variation in the beam lengths shall be placed at the fixed joint. Dimensions are at right angles. Hatched areas to be poured after beams have been erected and joints grouted.

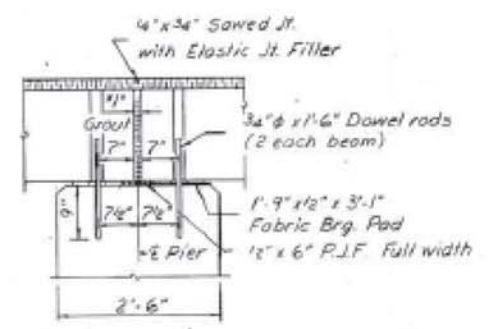


**PLAN**

**SECTION AA**



**EXP. ABUT.**



**FIXED PIER**

\*1" Joint shall be packed with a very dry mix of 2:1 sand and P.C. mortar. 1" Dimension may vary plus or minus to accommodate tolerance in beam lengths.

**FOR INFORMATION ONLY**

**BILL OF MATERIAL**

Bar	No	Size	Length	Shape
a	12	#5	25'-3"	—
D	204	#5	3'-10"	—
e	6	#6	33'-8"	—
Class X Concrete Cu Yd. 7.5				
Reinforcement Bars Pounds 1440				

**SUPERSTRUCTURE DETAILS**  
FA Route 796 over the North Fork Vermilion River  
FA Route 796 Sec. 106 BR-4  
Ford County  
Sta. 1741 +35

DESIGNED	D.A.S.
CHECKED	
DRAWN	P.A.S.
CHECKED	