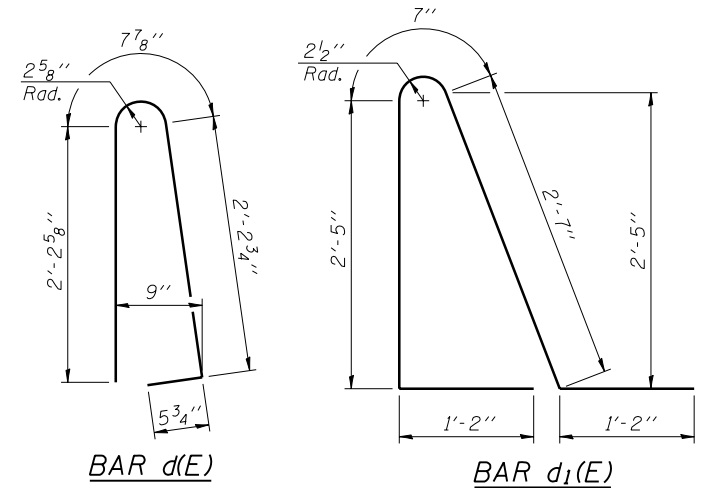
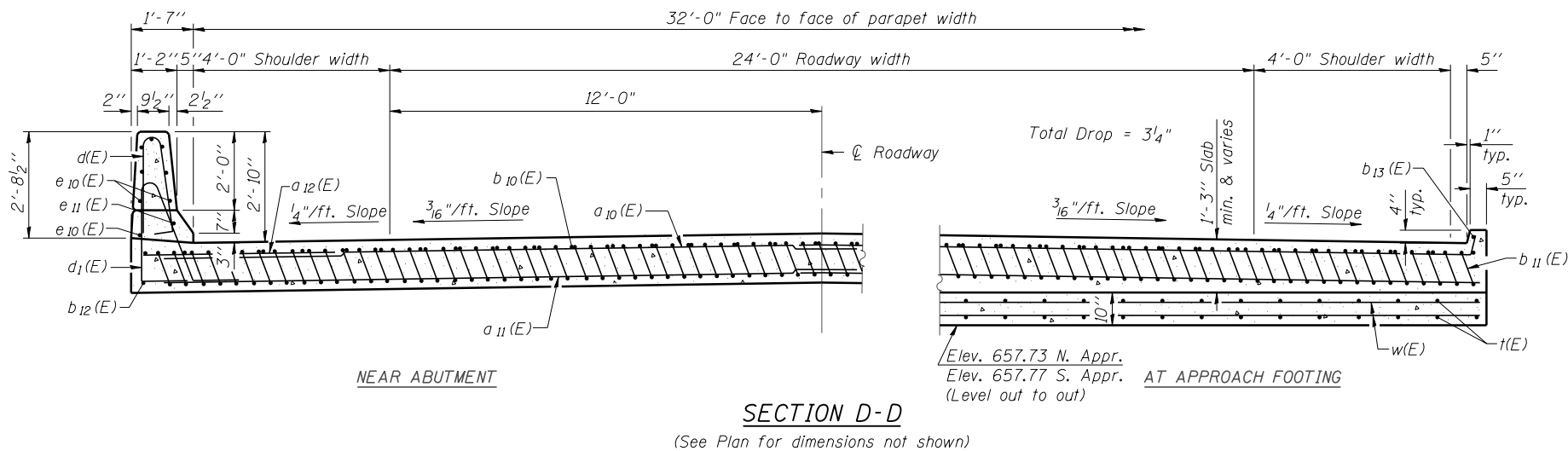


Notes:
 See sheet SA-11 of SA-15 for Detail A and View B-B.
 Approach slab and parapet concrete shall be paid for as Concrete Superstructure.
 Approach footing concrete shall be paid for as Concrete Structures.
 Reinforcement shall be paid for as Reinforcement Bars, Epoxy Coated.
 The approach footing maximum applied service bearing pressure (Qmax) = 2.0 ksf.
 Cost of excavation for approach footing included with Concrete Structures.
 For Porous Granular Embankment (Special) and drainage treatment details, see sheet SA-02 of SA-15.
 For additional parapet details, see sheet SA-07 of SA-15.

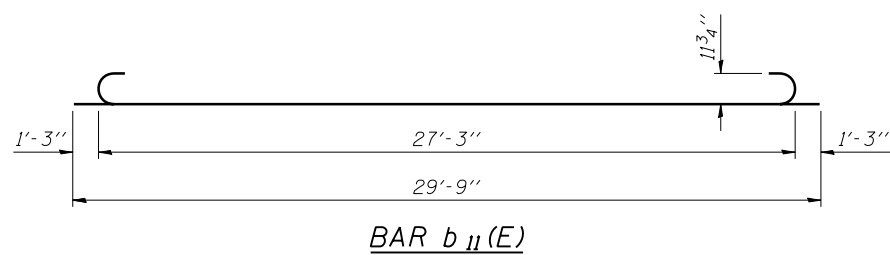
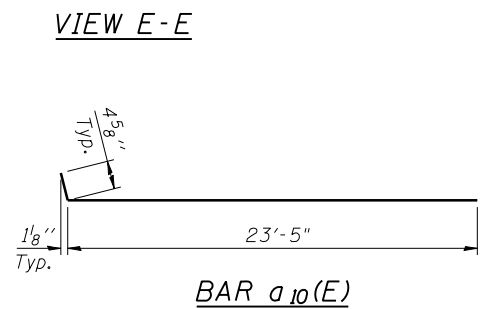
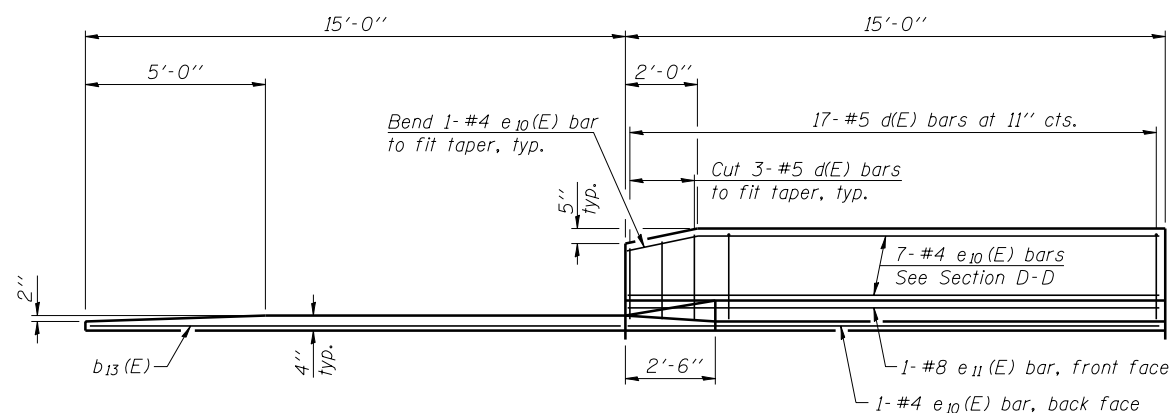


* Tilt #9 b₁₁(E) bars as required to maintain clearance.
 *** Cost included with Concrete Superstructure.



**TWO APPROACHES
 BILL OF MATERIAL**

Bar	No.	Size	Length	Shape
a ₁₀ (E)	100	#4	23'-10"	┌───┐
a ₁₁ (E)	184	#5	25'-2"	┌───┐
a ₁₂ (E)	48	#6	6'-6"	┌───┐
b ₁₀ (E)	56	#4	29'-8"	┌───┐
b ₁₁ (E)	162	#9	29'-9"	┌───┐
b ₁₂ (E)	4	#4	14'-8"	┌───┐
b ₁₃ (E)	4	#4	14'-8"	┌───┐
d(E)	68	#5	5'-7"	┌───┐
d ₁ (E)	68	#5	7'-11"	┌───┐
e ₁₀ (E)	32	#4	14'-8"	┌───┐
e ₁₁ (E)	4	#8	14'-8"	┌───┐
t(E)	140	#4	13'-4"	┌───┐
w(E)	160	#5	24'-3"	┌───┐
Concrete Superstructure		Cu. Yd.	115.0	
Concrete Structures		Cu. Yd.	28.5	
Reinforcement Bars, Epoxy Coated		Pound	31,200	



**BRIDGE APPROACH SLAB DETAILS
 STRUCTURE NO. 027-0072**

(Sheet 2 of 2)

FILE NAME = ...665980-SN0270072-012-Appr-Slab2.dgn

ZROKA engineering
 Zroka Engineering, P.C.
 4216 North Hermitage
 Chicago, IL 60613

USER NAME = SAW	DESIGNED - LAS	REVISED -
PLOT SCALE = 0:2.0000 ' : IN.	CHECKED - DAZ	REVISED -
PLOT DATE = 10/30/2012	DRAWN - SAW	REVISED -
	CHECKED - LAS	REVISED -

**STATE OF ILLINOIS
 DEPARTMENT OF TRANSPORTATION**

**BRIDGE APPROACH SLAB DETAILS
 S.N. 027-0072**

SHEET NO. SA-12 OF SA-15 SHEETS

F.A.P. RTE.	SECTION	COUNTY	TOTAL SHEETS	SHEET NO.
796	(106 BR-1 & BR-4)BR	FORD	78	44
CONTRACT NO. 66980				
ILLINOIS FED. AID PROJECT				