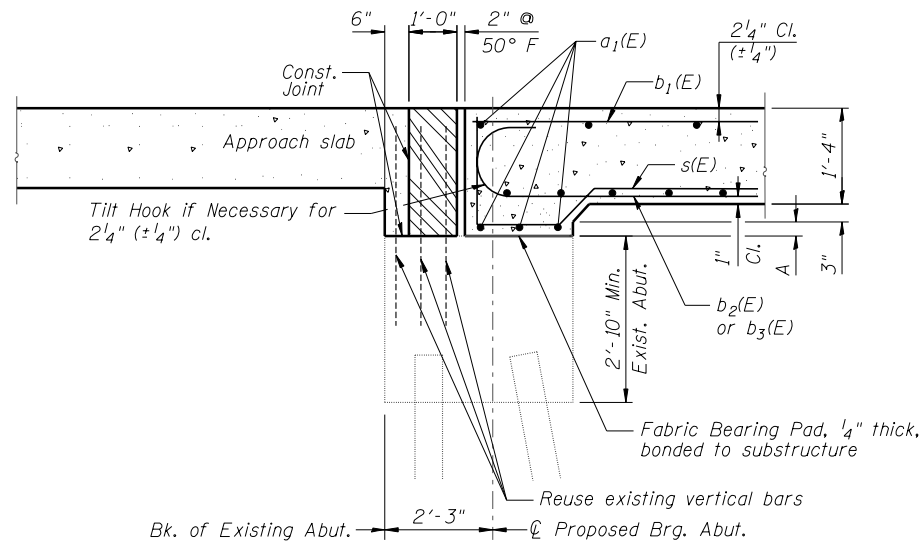


**SUPERSTRUCTURE  
BILL OF MATERIAL**

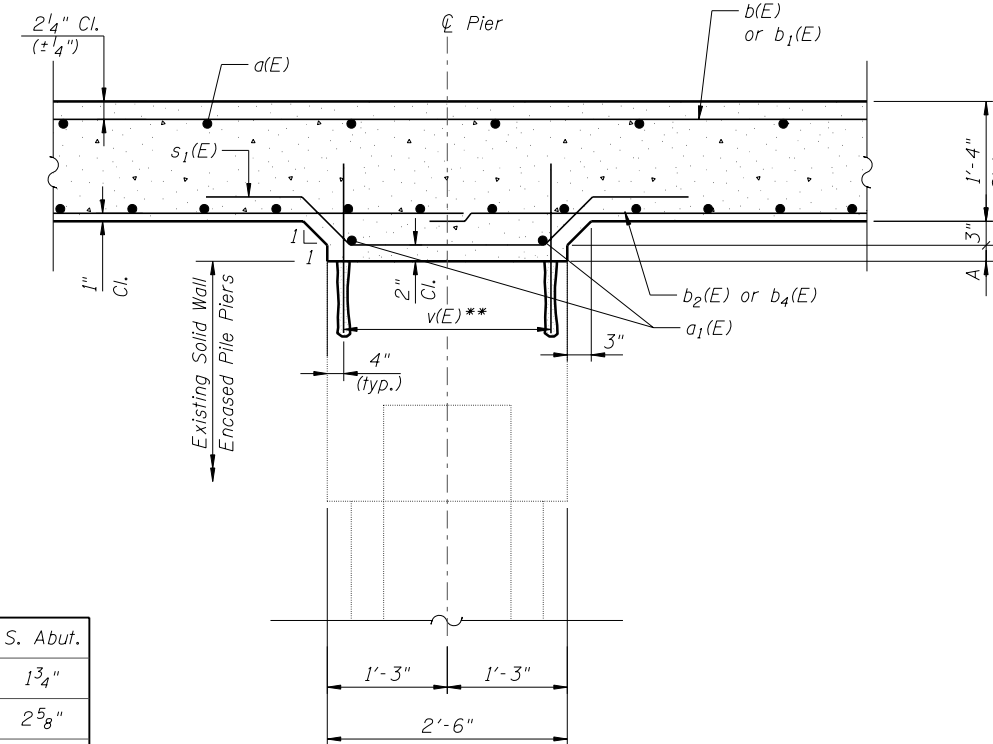
Bar	No.	Size	Length	Shape
a(E)	412	#7	34'-10"	—
a <sub>1</sub> (E)	24	#5	25'-0"	—
b(E)	74	#9	25'-5"	—
b <sub>1</sub> (E)	180	#9	25'-2"	—
b <sub>2</sub> (E)	74	#9	36'-1"	U
b <sub>3</sub> (E)	72	#9	27'-6"	U
b <sub>4</sub> (E)	37	#9	35'-2"	—
b <sub>5</sub> (E)	36	#9	25'-8"	—
d(E)	224	#5	5'-7"	∩
d <sub>1</sub> (E)	224	#5	7'-11"	∩
e(E)	84	#4	16'-8"	—
e <sub>1</sub> (E)	6	#8	37'-6"	—
e <sub>2</sub> (E)	8	#4	27'-1"	—
s(E)	74	#4	6'-3"	U
s <sub>1</sub> (E)	74	#4	7'-1"	U
Reinforcement Bars, Epoxy Coated			Pound	80,630
Concrete Superstructure			Cu. Yds.	210.3



**SECTION A-A**

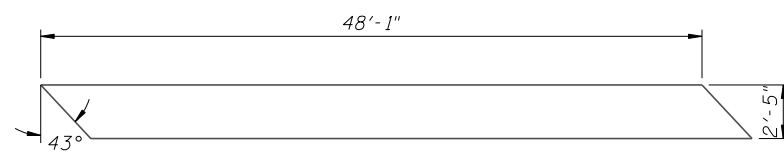
**DIMENSION "A"**

	N. Abut.	Pier 1	Pier 2	S. Abut.
East Edge of Bridge	1 <sup>3</sup> / <sub>8</sub> "	2"	2 <sup>1</sup> / <sub>4</sub> "	1 <sup>3</sup> / <sub>4</sub> "
∅ Roadway & PGL	1 <sup>3</sup> / <sub>4</sub> "	2 <sup>1</sup> / <sub>4</sub> "	2 <sup>5</sup> / <sub>8</sub> "	2 <sup>5</sup> / <sub>8</sub> "
West Edge of Bridge	3 <sup>3</sup> / <sub>4</sub> "	1 <sup>5</sup> / <sub>8</sub> "	1 <sup>3</sup> / <sub>4</sub> "	1 <sup>3</sup> / <sub>4</sub> "



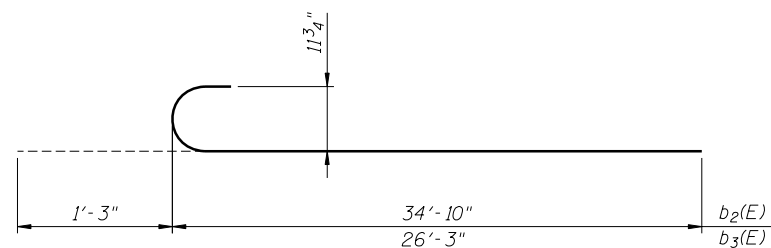
**SECTION B-B**

\*\* v(E) bars filled with pier

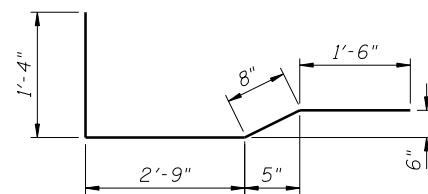


**FABRIC BEARING PAD**

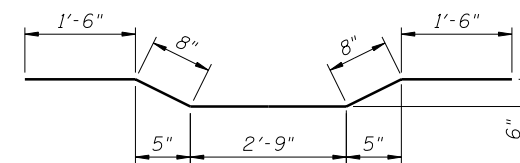
This work shall consist of furnishing and installing expansion bearings pads at the locations shown and as detailed on the plans. The materials shall be according to Section 1082 of the Standard Specifications. The cost of this work shall be included with Concrete Superstructures.



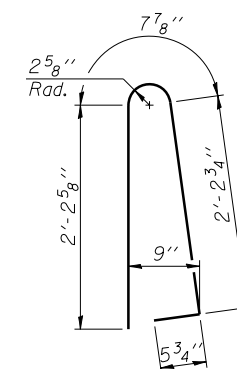
**BARS b<sub>2</sub>(E) & b<sub>3</sub>(E)**



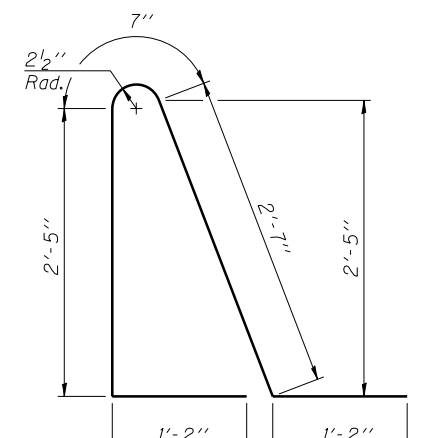
**BAR s(E)**



**BAR s<sub>1</sub>(E)**



**BAR d(E)**



**BAR d<sub>1</sub>(E)**

**SUPERSTRUCTURE DETAILS 2  
STRUCTURE NO. 027-0072**

FILE NAME = ...665980-SN0270072-008-SupDet-2.dgn



Zroka Engineering, P.C.  
4216 North Hermitage  
Chicago, IL 60613

USER NAME = SAW	DESIGNED - LAS	REVISED -
	CHECKED - DAZ	REVISED -
PLOT SCALE = 0:2.0000 ' / IN.	DRAWN - SAW	REVISED -
PLOT DATE = 10/30/2012	CHECKED - LAS	REVISED -

**STATE OF ILLINOIS  
DEPARTMENT OF TRANSPORTATION**

**SUPERSTRUCTURE DETAILS 2  
S.N. 027-0072**

SHEET NO. SA-08 OF SA-15 SHEETS

F.A.P. RTE.	SECTION	COUNTY	TOTAL SHEETS	SHEET NO.
796	(106 BR-1 & BR-4)BR	FORD	78	40
CONTRACT NO. 66980				
ILLINOIS FED. AID PROJECT				