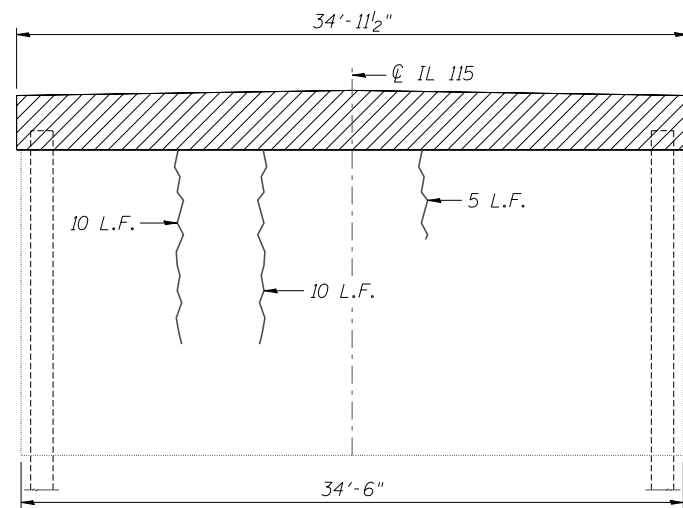
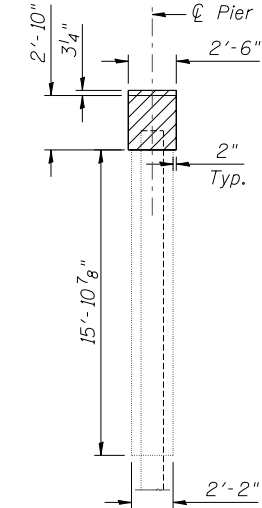


PIER 1 NORTH ELEVATION



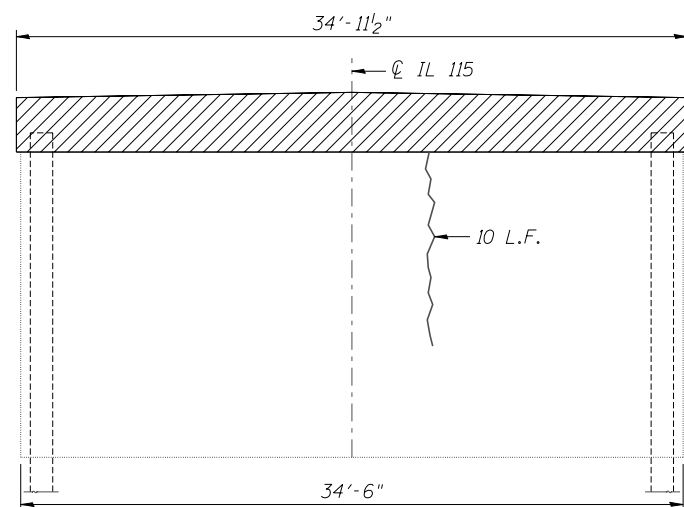
PIER 2 NORTH ELEVATION



TYPICAL END VIEW

TWO PIERS
BILL OF MATERIAL

Bar	No.	Size	Length	Shape
p ₁₀₀ (E)	12	#7	34'-10"	—
s ₁₀₀ (E)	76	#4	10'-1"	□
u ₁₀₀ (E)	12	#6	8'-1"	□
v ₁₀₂ (E)	140	#5	4'-2"	—
Reinforcement Bars, Epoxy Coated		Pound	2,120	
Concrete Removal		Cu. Yd.	19.2	
Concrete Structures		Cu. Yd.	19.4	
Epoxy Crack Injection		Foot	38	



PIER 1 SOUTH ELEVATION

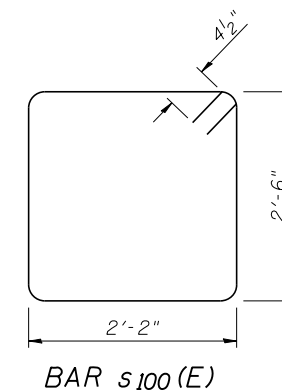
Notes:

Existing reinforcement shall be cleaned and incorporated into the new construction. Cost included with Concrete Removal.

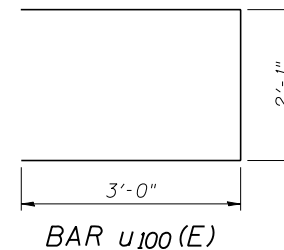
No repairs are required on the south elevation of Pier 2.

Repairs shown are based upon observations performed at the time of plan preparation and are for bidding purposes only. Actual areas to be repaired shall be determined by the Field Engineer at the time of construction.

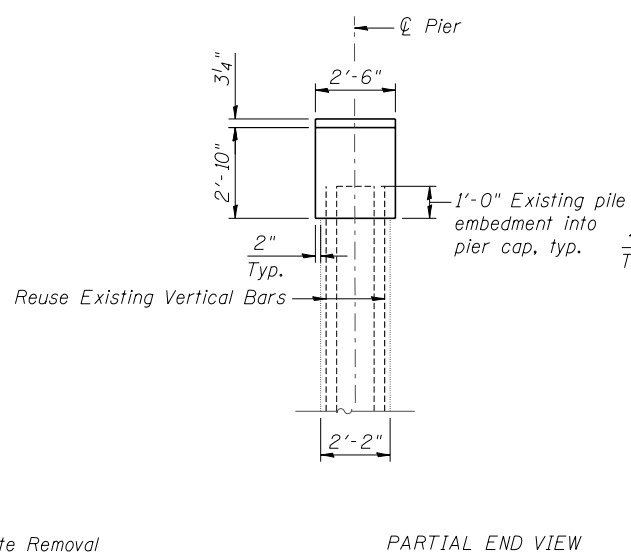
Where existing precast concrete piles are to extend from the remaining portion of the existing structure into new construction, the concrete shall be removed so as to leave the projecting piles clean and undamaged. The newly exposed piles to be incorporated into new concrete shall be blast-cleaned. Cost included with Concrete Removal.



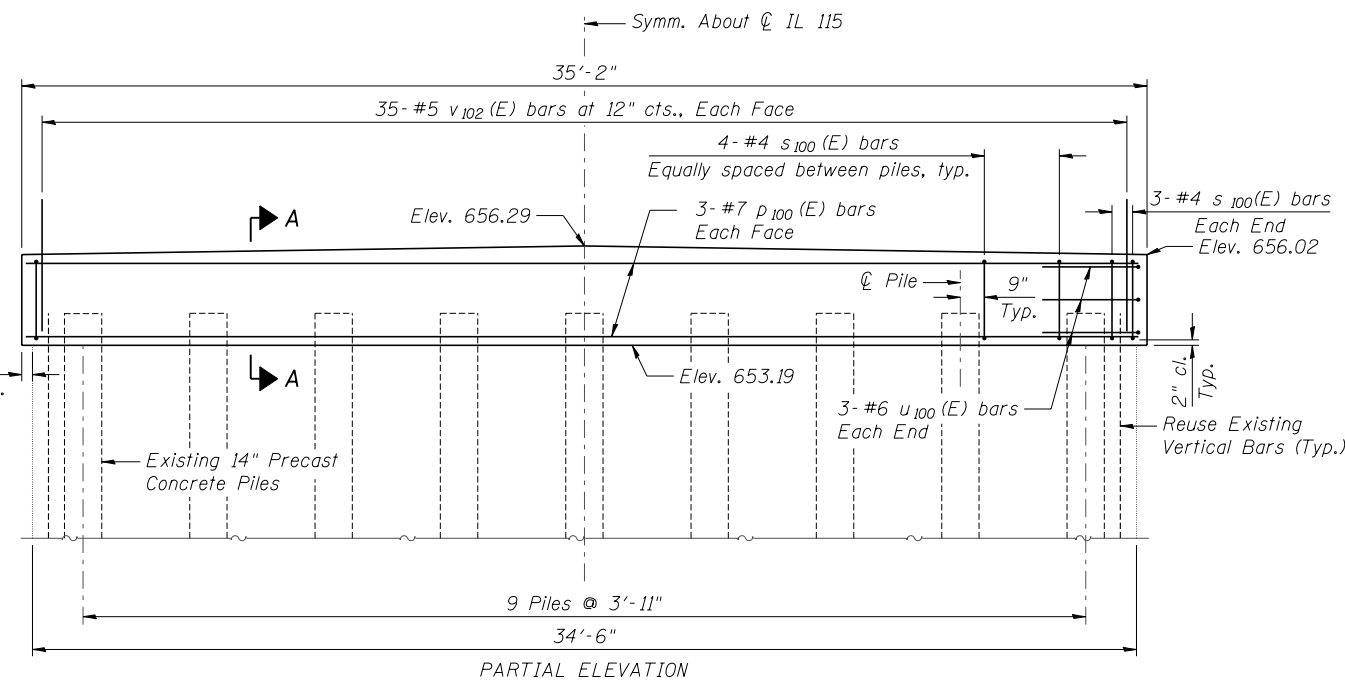
BAR s₁₀₀ (E)



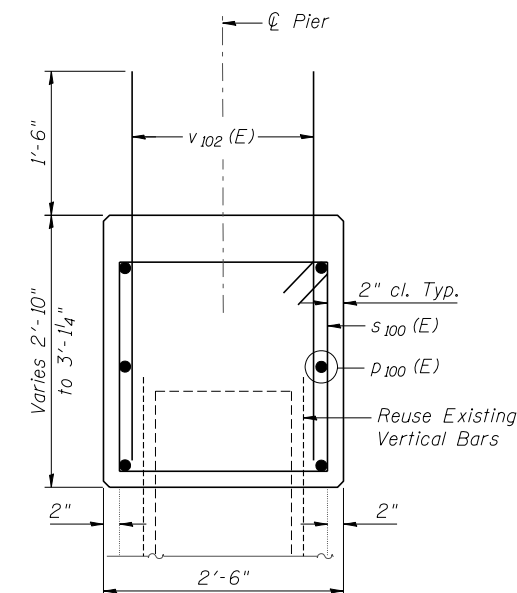
BAR u₁₀₀ (E)



PARTIAL END VIEW



PARTIAL ELEVATION



SECTION A-A

PIER CAP REPLACEMENT, TYP.

LEGEND

- Concrete Removal
- Epoxy Crack Injection

FILE NAME = ...G65980-SN0270073-013-PierRepor-a.dgn



USER NAME = SAW	DESIGNED - PM	REVISED -
PLOT SCALE = 0:2.0000 '1' / IN.	CHECKED - JLA	REVISED -
PLOT DATE = 10/30/2012	DRAWN - SAW	REVISED -
	CHECKED - PM	REVISED -

STATE OF ILLINOIS
DEPARTMENT OF TRANSPORTATION

PIER MODIFICATIONS
S.N. 027-0073

SHEET NO. SB-13 OF SB-13 SHEETS

F.A.P. RTE.	SECTION	COUNTY	TOTAL SHEETS	SHEET NO.
796	(106 BR-1 & BR-4)BR	FORD	78	32
CONTRACT NO. 66980				

ILLINOIS FED. AID PROJECT