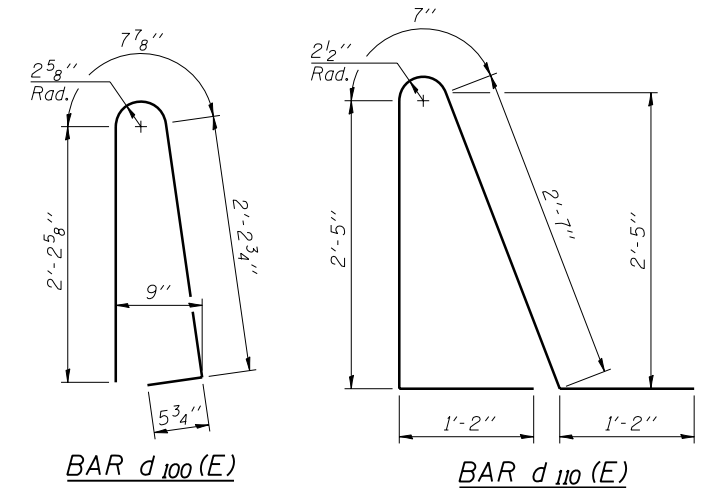


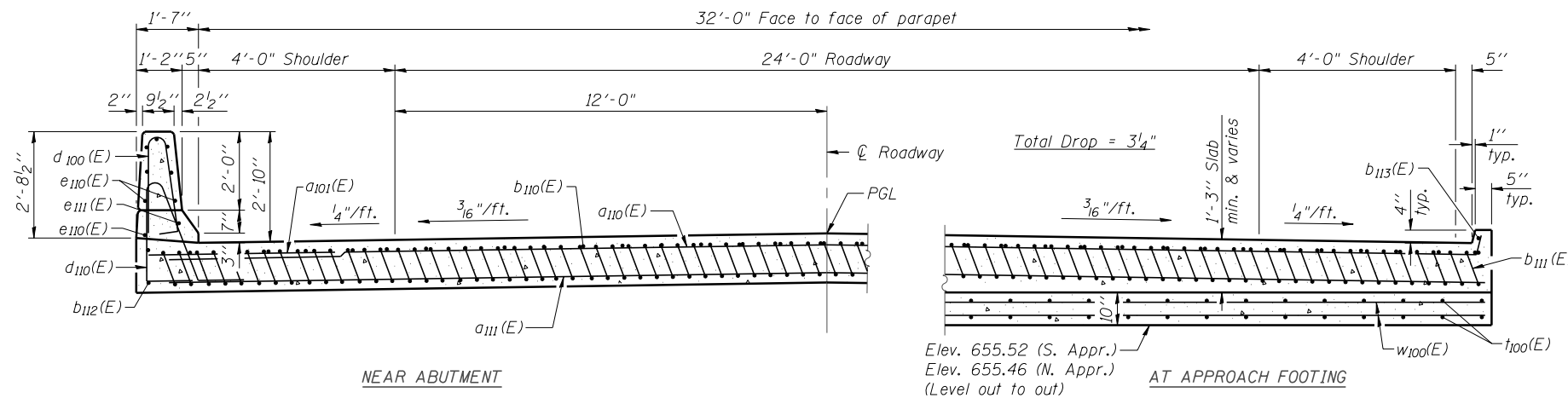
Notes:

See sheet SB-10 of SB-13 for Detail A and View B-B.  
 Approach slab and parapet concrete shall be paid for as Concrete Superstructure.  
 Approach footing concrete shall be paid for as Concrete Structures.  
 Reinforcement shall be paid for as Reinforcement Bars, Epoxy Coated.  
 The approach footing maximum applied service bearing pressure ( $Q_{max}$ ) = 2.0 ksf.  
 Cost of excavation for approach footing included with Concrete Structures.  
 For Porous Granular Embankment (Special) and drainage treatment details, see sheet SB-02 of SB-13.  
 For  $v_{101}(E)$  bar details, see sheet SB-12 of SB-13.

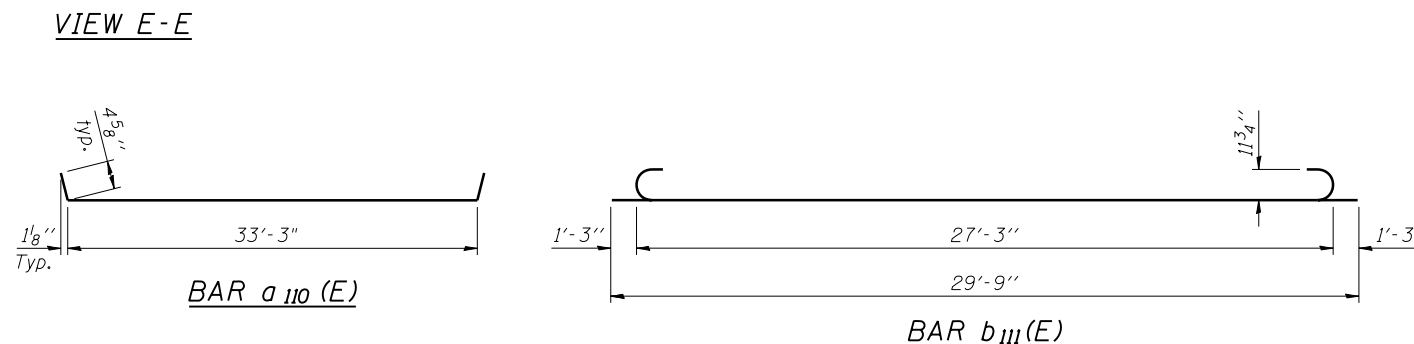
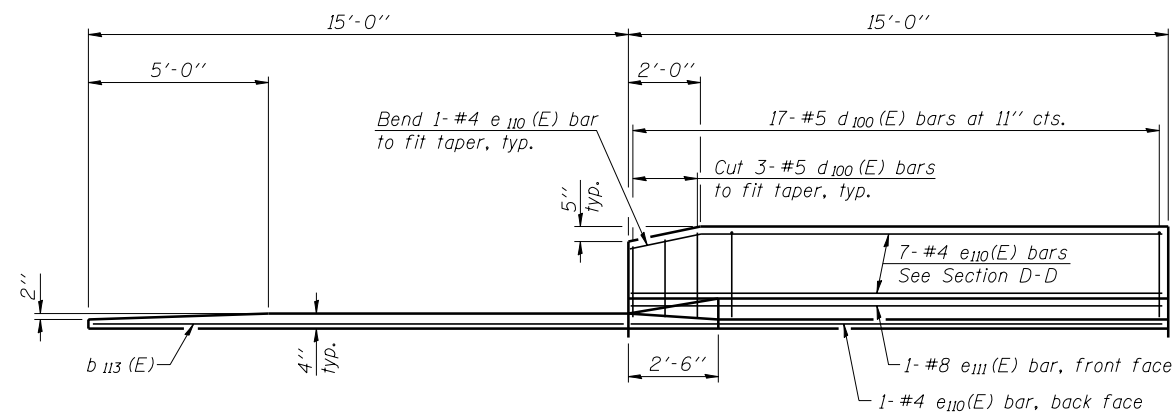


\* Tilt #9  $b_{111}(E)$  bars as required to maintain clearance.

\*\*\* Cost included with Concrete Superstructure.



SECTION D-D  
 (See Plan for dimensions not shown)



TWO APPROACHES  
 BILL OF MATERIAL

Bar	No.	Size	Length	Shape
$a_{101}(E)$	48	#6	6'-6"	—
$a_{110}(E)$	50	#4	34'-1"	—
$a_{111}(E)$	92	#5	33'-6"	—
$b_{110}(E)$	56	#4	29'-8"	—
$b_{111}(E)$	164	#9	29'-9"	—
$b_{112}(E)$	4	#4	14'-8"	—
$b_{113}(E)$	4	#4	14'-8"	—
$d_{100}(E)$	68	#5	5'-7"	—
$d_{110}(E)$	68	#5	7'-11"	—
$e_{110}(E)$	32	#4	14'-8"	—
$e_{111}(E)$	4	#8	14'-8"	—
$t_{100}(E)$	140	#4	9'-8"	—
$w_{100}(E)$	80	#5	33'-6"	—
Concrete Superstructure		Cu. Yd.	110.9	
Concrete Structures		Cu. Yd.	20.9	
Reinforcement Bars, Epoxy Coated		Pound	27,730	

BA-0 7-1-10



USER NAME = SAW	DESIGNED - PM	REVISED -
	CHECKED - JLA	REVISED -
PLOT SCALE = 0:2.0000 ' / IN.	DRAWN - SAW	REVISED -
PLOT DATE = 10/30/2012	CHECKED - PM	REVISED -

STATE OF ILLINOIS  
 DEPARTMENT OF TRANSPORTATION

BRIDGE APPROACH SLAB DETAILS  
 S.N. 027-0073

SHEET NO. SB-11 OF SB-13 SHEETS

F.A.P. RTE.	SECTION	COUNTY	TOTAL SHEETS	SHEET NO.
796	(106 BR-1 & BR-4)BR	FORD	78	30
CONTRACT NO. 66980				
ILLINOIS FED. AID PROJECT				

FILE NAME = ...E65980-SN0270073-011-Appr-Slab2.dgn