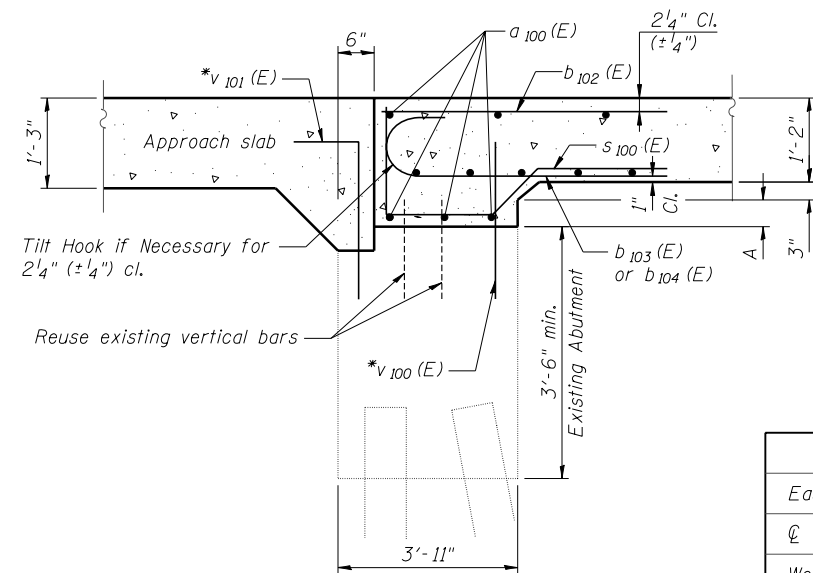


**SUPERSTRUCTURE
BILL OF MATERIAL**

Bar	No.	Size	Length	Shape
a ₁₀₀ (E)	164	#5	34'-11"	—
a ₁₀₁ (E)	100	#6	6'-6"	—
b ₁₀₀ (E)	62	#9	19'-8"	—
b ₁₀₁ (E)	30	#9	49'-1"	—
b ₁₀₂ (E)	60	#5	15'-10"	—
b ₁₀₃ (E)	62	#9	26'-11"	C
b ₁₀₄ (E)	60	#9	21'-0"	C
b ₁₀₅ (E)	31	#9	25'-7"	—
b ₁₀₆ (E)	30	#9	19'-3"	—
d ₁₀₀ (E)	168	#5	5'-7"	D
d ₁₀₁ (E)	168	#5	7'-8"	D
e ₁₀₀ (E)	56	#4	12'-6"	—
e ₁₀₁ (E)	28	#4	12'-0"	—
e ₁₀₂ (E)	6	#8	28'-9"	—
e ₁₀₃ (E)	6	#4	26'-8"	—
s ₁₀₀ (E)	72	#4	6'-4"	S
s ₁₀₁ (E)	72	#4	6'-10"	S
Reinforcement Bars, Epoxy Coated			Pound	35,920
Concrete Superstructure			Cu. Yds.	141.4



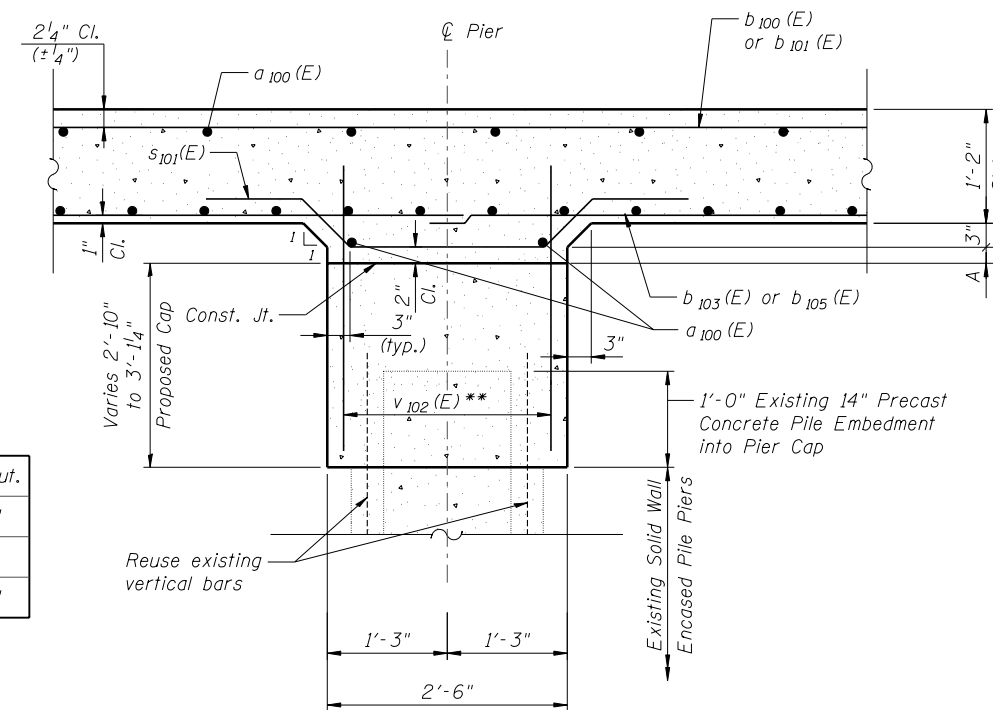
SECTION A-A

* v₁₀₀(E) and v₁₀₁(E) bars billed with Abutments

Note: Existing dowel bars not shown for clarity. See Sheet SB-12.

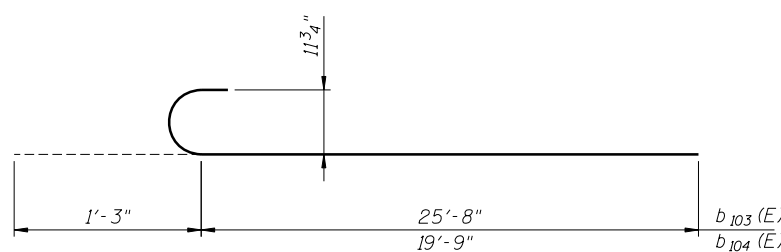
DIMENSION "A"

	N. Abut.	Pier 1	Pier 2	S. Abut.
East Edge of Bridge	3 ¹ / ₄ "	3 ³ / ₄ "	3 ⁷ / ₈ "	3 ³ / ₄ "
℄ Roadway & PGL	3 ⁵ / ₈ "	4 ¹ / ₈ "	4 ¹ / ₈ "	4 ¹ / ₈ "
West Edge of Bridge	3 ¹ / ₄ "	3 ³ / ₄ "	3 ⁷ / ₈ "	3 ³ / ₄ "

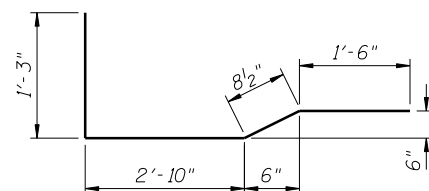


SECTION B-B

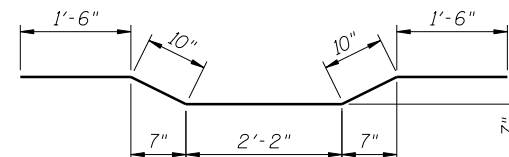
**v₁₀₂(E) bars billed with pier



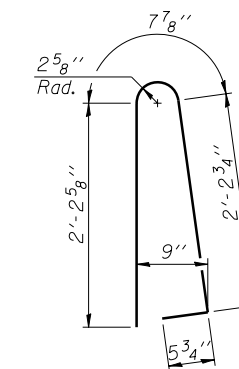
BARS b₁₀₃(E) & b₁₀₄(E)



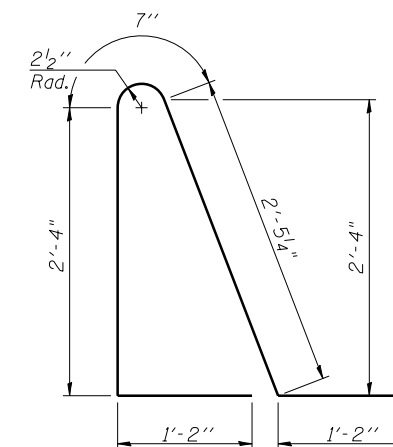
BAR s₁₀₀(E)



BAR s₁₀₁(E)



BAR d₁₀₀(E)



BAR d₁₀₁(E)

FILE NAME = ...665980-SN0270073-008-SupDe-2.dgn



USER NAME = SAW	DESIGNED - PM	REVISED -
PLOT SCALE = 0:2.0000 ' : 1"	CHECKED - JLA	REVISED -
PLOT DATE = 10/30/2012	DRAWN - SAW	REVISED -
	CHECKED - PM	REVISED -

**STATE OF ILLINOIS
DEPARTMENT OF TRANSPORTATION**

**SUPERSTRUCTURE DETAILS
S.N. 027-0073**

SHEET NO. SB-08 OF SB-13 SHEETS

F.A.P. RTE.	SECTION	COUNTY	TOTAL SHEETS	SHEET NO.
796	(106 BR-1 & BR-4)BR	FORD	78	27
CONTRACT NO. 66980				
ILLINOIS FED. AID PROJECT				