



EXIST. CURVE 115-6-1  
 P.I. STA. = 1735+99.99  
 $\Delta = 1^{\circ} 08' 00''$  (LT)  
 $D = 0^{\circ} 08' 30''$   
 $R = 40,442.76'$   
 $T = 400.00'$   
 $L = 799.98'$   
 $E = 1.98'$   
 $\theta =$   
 T.R. =  
 S.E. STA. = 1731+99.99  
 P.T. STA. = 1739+99.96

EXIST ROW VARIES  
 STA 1734+30, 30' TO 1737+54.77, 31.3'

STA 1737+54.77  
 R.O.W. 31.3' LT

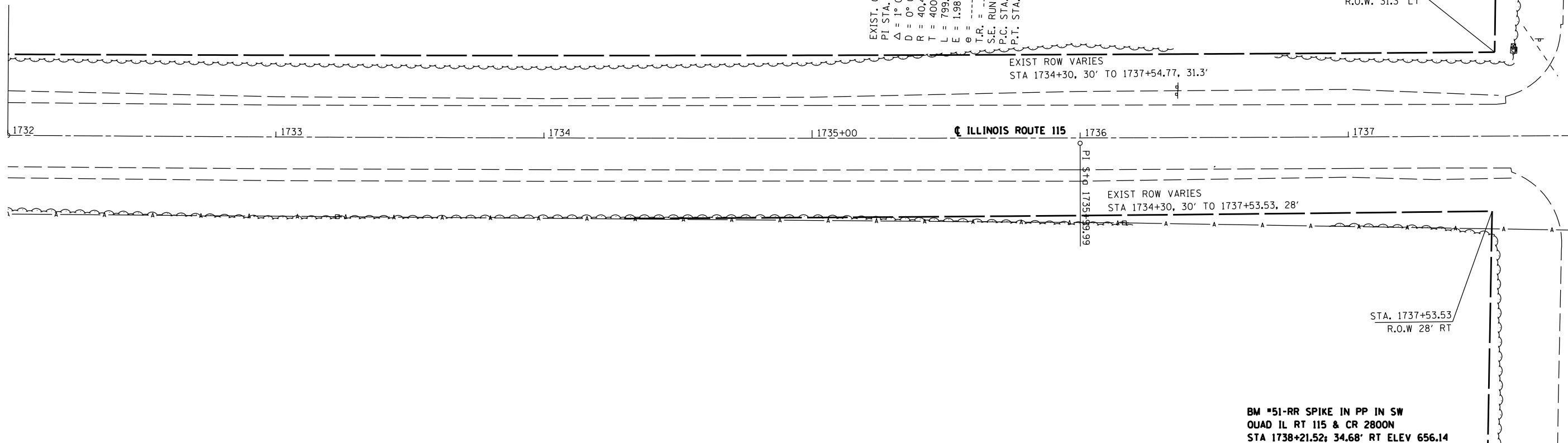
EXIST ROW VARIES  
 STA 1734+30, 30' TO 1737+53.53, 28'

STA. 1737+53.53  
 R.O.W. 28' RT

BM #51-RR SPIKE IN PP IN SW  
 QUAD IL RT 115 & CR 2800N  
 STA 1738+21.52; 34.68' RT ELEV 656.14

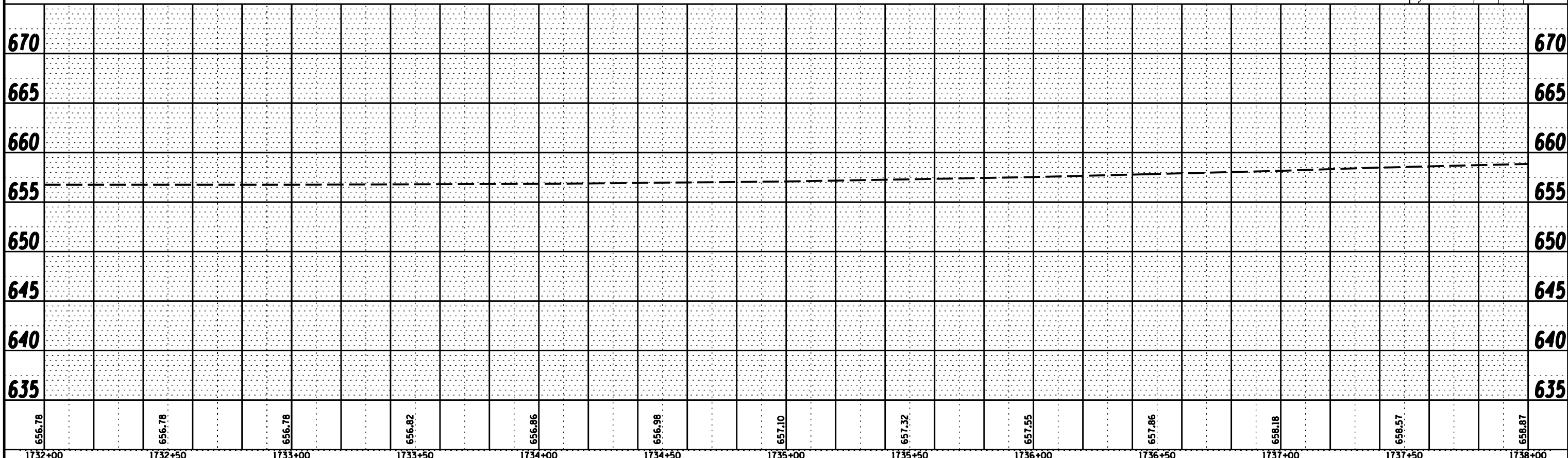
COUNTY ROAD 2800 N

MATCH LINE - STA. 1738 + 00



PLAN	SURVEYED	DATE
	PLOTTED	BY
	GRADES CHECKED	
	STRUCTURE NOTATION CHKD	
NOTE BOOK NO.	CHECKED	
	FILE NAME	

PROFILE	SURVEYED	DATE
	PLOTTED	BY
	GRADES CHECKED	
	STRUCTURE NOTATION CHKD	
NOTE BOOK NO.	CHECKED	
	FILE NAME	



656.78	656.78	656.78	656.82	656.86	656.98	657.10	657.32	657.55	657.86	658.18	658.57	658.87
1732+00	1732+50	1733+00	1733+50	1734+00	1734+50	1735+00	1735+50	1736+00	1736+50	1737+00	1737+50	1738+00

FILE NAME =	USER NAME = *USER*
*FILES*	
PLOT SCALE = *SCALE*	
PLOT DATE = *DATE*	*TIME*

DESIGNED - JMS	7/07/09	REVISED -
DRAWN - JPC	7/07/09	REVISED -
CHECKED - ELH	7/07/09	REVISED -
DATE - 7/07/09		REVISED -

**STATE OF ILLINOIS**  
**DEPARTMENT OF TRANSPORTATION**

**IL ROUTE 115 PLAN AND PROFILE SN 027-0072**

SCALE: AS SHOWN    SHEET NO. 1 OF 3 SHEETS    STA. 1732+00 TO STA. 1738+00

F.A.P. RTE.	SECTION	COUNTY	TOTAL SHEETS	SHEET NO.
796	1061BR-41BR	FORD	78	16
FED. ROAD DIST. NO.		ILLINOIS FED. AID PROJECT		
CONTRACT NO. 66980				