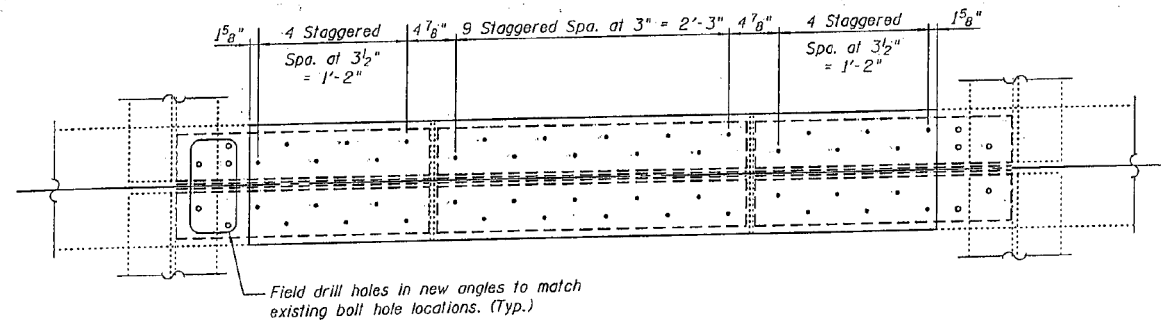
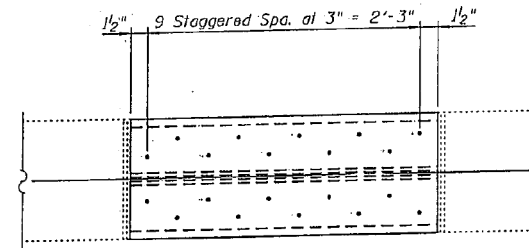


STATE OF ILLINOIS
DEPARTMENT OF TRANSPORTATION



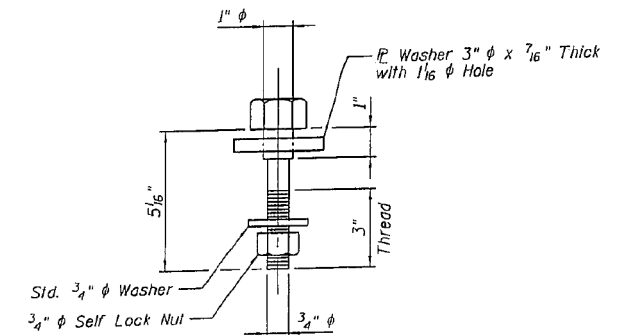
VIEW B-B

Note:
Stringer base plates not shown for clarity.

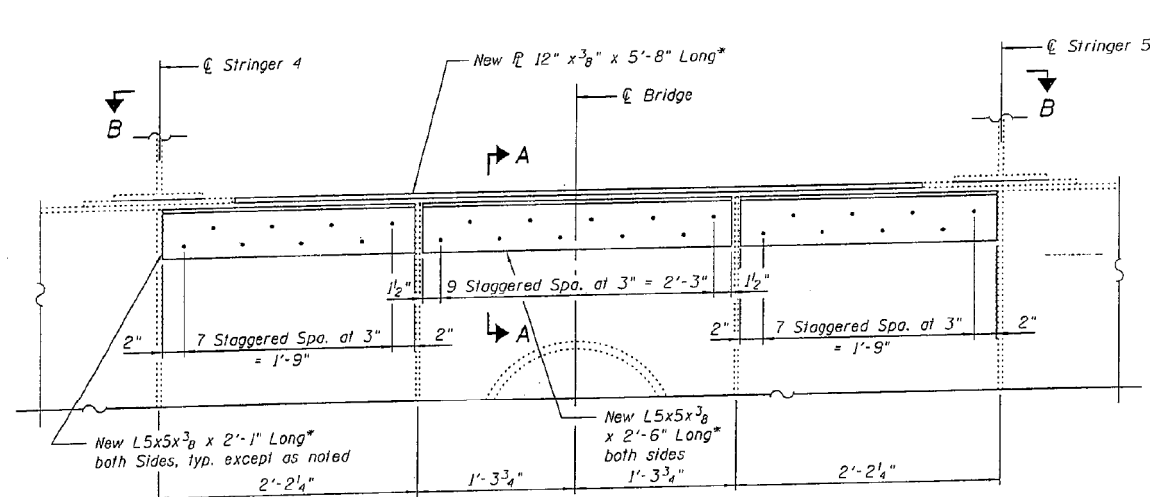


VIEW C-C

Note:
Gaps between the existing steel and the new steel angles and/or cover plates shall be sealed with an approval polyurethane sealant. The sealant shall be compatible with the proposed paint system and shall be submitted to the Engineer for approval prior to use. All costs associated with the installation of the sealant shall be included with the cost for Structural Steel Repair.

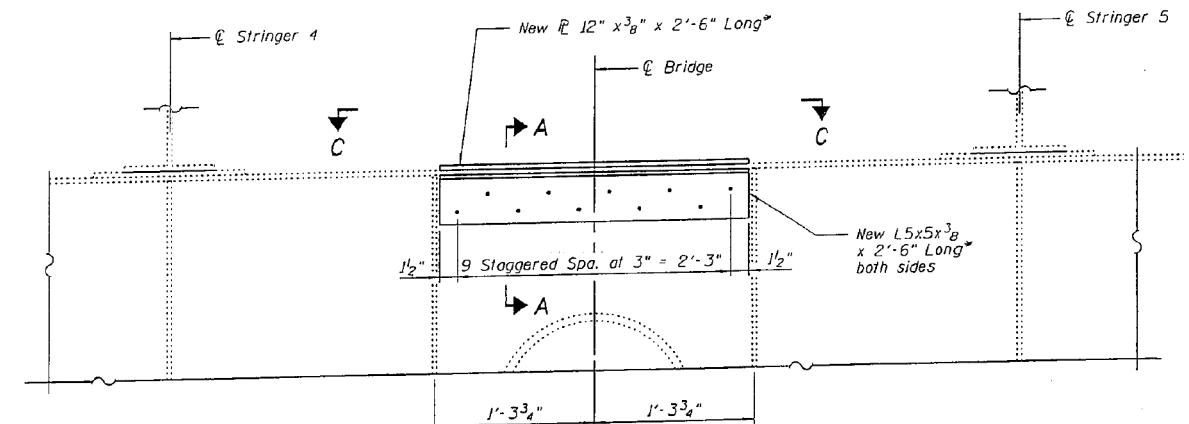


NEW SHOULDER BOLTS TO ACCOMODATE REPAIR ANGLE
AT EXPANSION SIDE STRINGER CONNECTIONS
AT SPAN 18, FLOORBEAM 6
(2 Required)



STRUCTURAL STEEL REPAIR C
SPAN 18, FLOORBEAM 6
(Looking South)

* Fabricate new plates and angles for top flange repairs to match existing top flange profile. See Floorbeam Top Flange Profile detail.



STRUCTURAL STEEL REPAIR D
SPAN 19, FLOORBEAM 3
(Looking South)

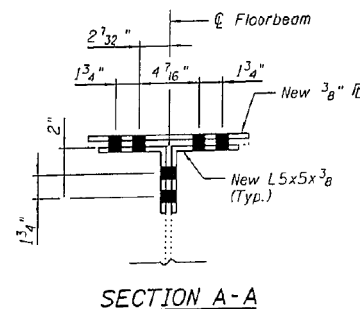
Notes:
Grind heels of angles as required for installation.
Field drill holes in existing floorbeams and new plates using new angles as templates.

BILL OF MATERIAL

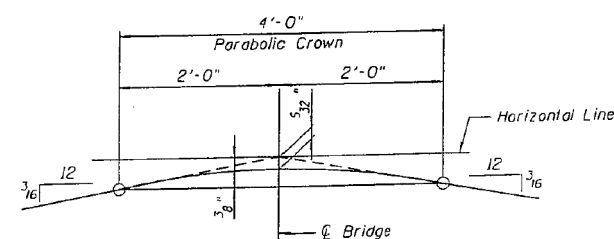
Item	Unit	Total
Structural Steel Repair	Pound	450

MISCELLANEOUS STEEL
REPAIR DETAILS - 3
I-80 OVER
MISSISSIPPI RIVER
STRUCTURE NO. 081-0011

DESIGNED RLM
CHECKED DWP
DRAWN AEC
CHECKED RLM
09/17/09



SECTION A-A



FLOORBEAM TOP FLANGE PROFILE

SHEET NO.	F.A.J. RTE.	SECTION	COUNTY	TOTAL SHEETS	SHEET NO.
19	80	(81-18)M-4	ROCK ISLAND	46	38
33 SHEETS		SN 081-0011		CONTRACT NO. 64F31	
		FED. ROAD DIST. NO. 7	ILLINOIS	FED. AID PROJECT	

DESIGNED VHV
CHECKED DAB
DRAWN baliva
CHECKED VHV DAB

EXAMINED
PASSED
ACTING ENGINEER OF STRUCTURAL SERVICES
ACTING ENGINEER OF BRIDGES AND STRUCTURES

DATE - OCTOBER 12, 2012

STATE OF ILLINOIS
DEPARTMENT OF TRANSPORTATION

FOR INFORMATION ONLY
SN 081-0011

SHEET 34 OF 42 SHEETS

F.A. RTE. SECTION COUNTY TOTAL SHEETS SHEET NO.
80 D2 BRIDGE PAINTING 2012-2 ROCK ISLAND 46 38
CONTRACT NO. 64H81
ILLINOIS FED. AID PROJECT