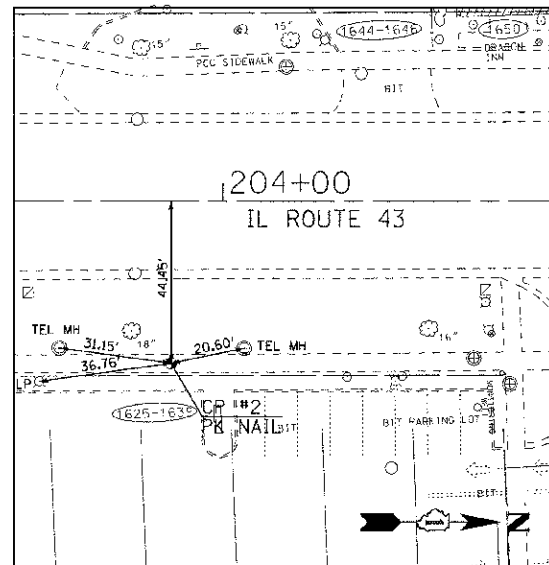
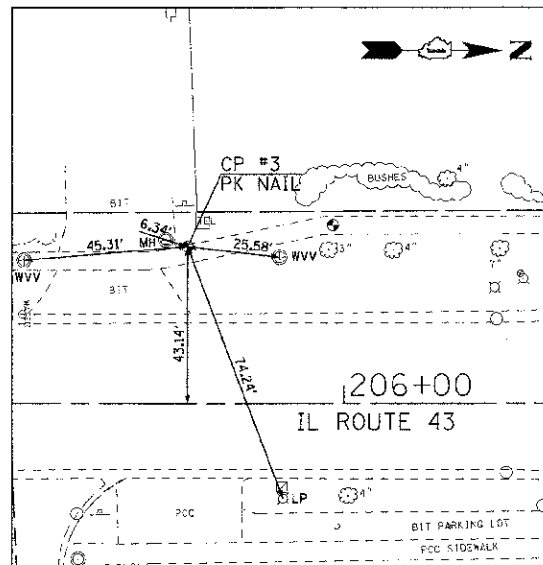


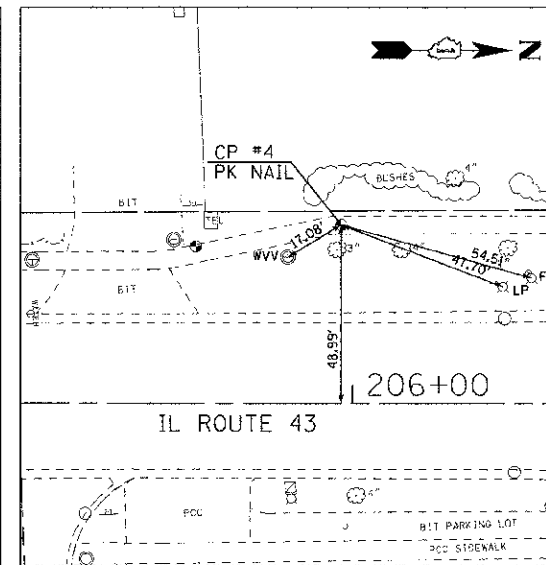
CP #1 STA 202+25.7, 45.05' RT
EL. 640.05
N=8707.298515 E=9939.710379



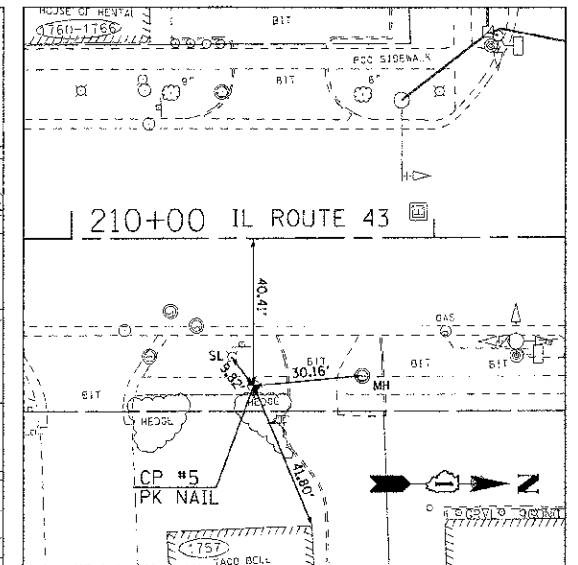
CP #2 STA 203+85.7, 44.45' RT
EL 640.75
N=8867.189634 E=9946.260393



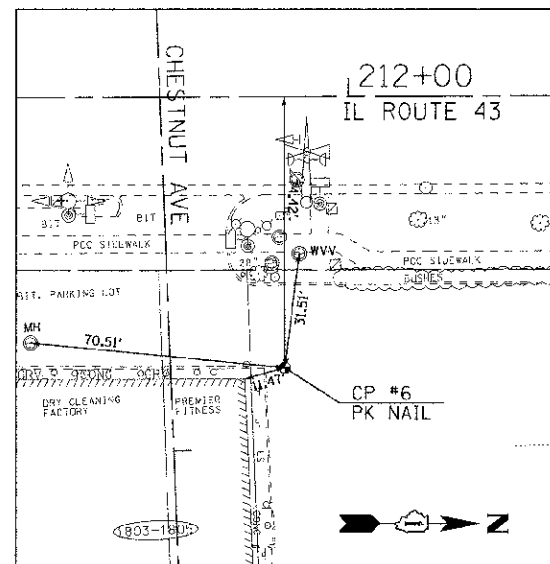
CP #3 STA 205+56.8, 43.14' LT
EL 639.05
N=9042.038584 E=9866.553833



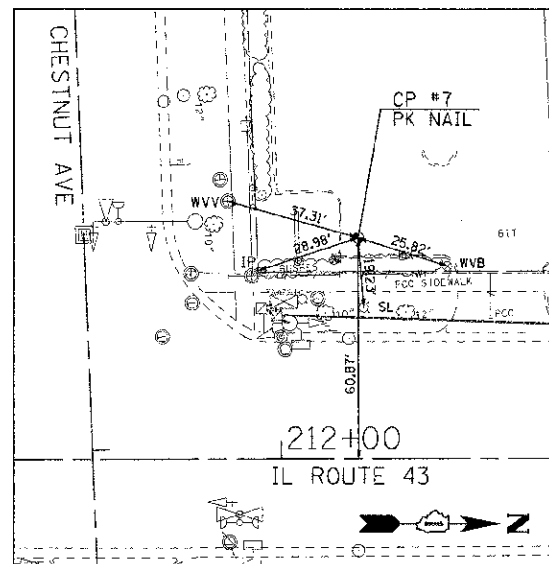
CP #4 STA 205+96.9, 48.99' LT
EL 639.38
N=9082.351365 E=9862.535425



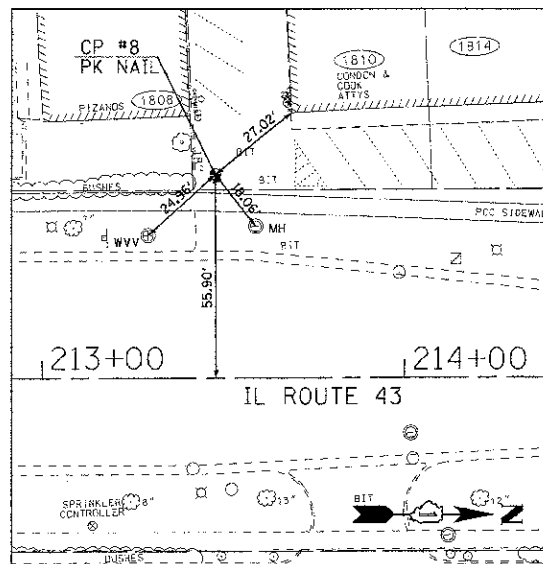
CP #5 STA 210+50.3, 40.41' RT
EL 642.27
N=9531.280163 E=9970.942342



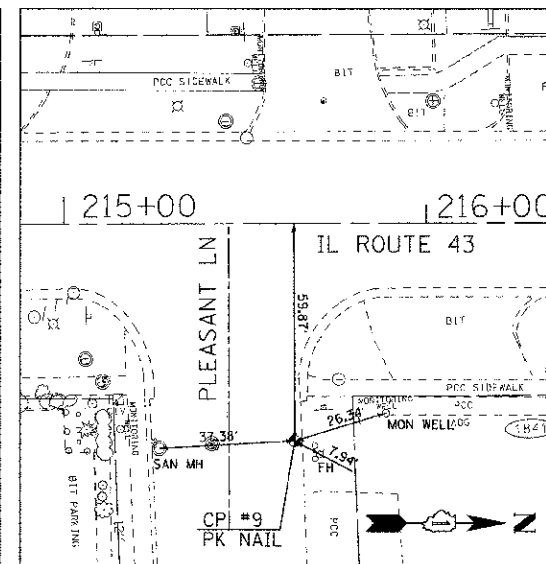
CP #6 STA 211+82.5, 28.40' RT
EL 642.18
N=9661.857458 E=10010.455312



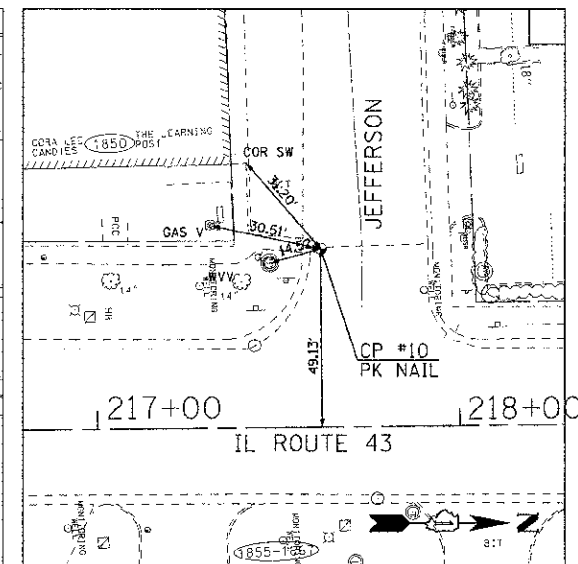
CP #7 STA 212+21.2, 60.87' RT
EL 641.81
N=9706.656498 E=9876.926638



CP #8 STA 213+47.8, 55.90' LT
EL 642.21
N 8392.744882 E 9838.183909



CP #9 STA 215+63.7, 59.87' RT
EL 641.79
N=10043.359488 E=10011.547766



CP #10 STA 217+61.5, 49.13' LT
EL 641.52
N=10245.972803 E=9910.189808

CONSULT & PLOT BY: BAXTER & WOODMAN, INC.
 SCALE: 1" = 40' (AS SHOWN)
 LISTED NO. 384 UNCL. - LICENSED PROFESSIONAL ENGINEER
 STATE OF ILLINOIS - LICENSE NO. 023/2012
 2/28/2012

	DESIGNED - DSH	REVISED -
	DRAWN - MAC	REVISED -
	CHECKED - TLH	REVISED -
	DATE - 8/23/12	FILE - 110025-12-ALIGN&TIES.sht

VILLAGE GLENVIEW, ILLINOIS
WAUKEGAN ROAD (IL ROUTE 43) AND CHESTNUT AVENUE
INTERSECTION IMPROVEMENTS

ALIGNMENT AND TIES
 SCALE: NONE STA. TO STA.

F.A.P./F.A.U. RTE.	SECTION	COUNTY	TOTAL SHEETS	SHEET NO.
0348/1352	05-00160-00-CH	COOK	109	19
C-91-070-06		CONTRACT NO. 63756		
FED. ROAD DIST. NO. 1 (ILLINOIS)		FED. AID PROJECT F-0348(35)		