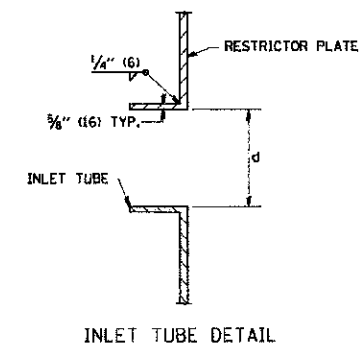
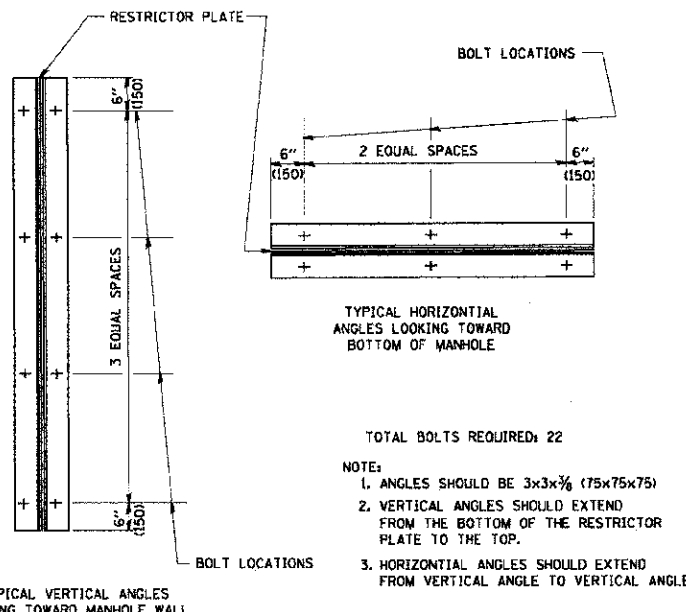


NOTES:

1. ALL STEEL ANGLES AND PLATES TO BE GALVANIZED AFTER FABRICATION.
2. ALL RESTRICTOR PLATES, ANGLES AND HARDWARE TO BE INCLUDED IN THE COST OF THE MANHOLE.
3. BASIS OF PAYMENT: "MANHOLES, TYPE A, 6 FT. (1.8 m) DIAMETER, TYPE I FRAME, CLOSED LID, RESTRICTOR PLATE" EACH



STATION	MANHOLE DIAMETER	FRAME AND GRATE	RESTRICTOR TYPE	INSIDE RESTRICTOR TYPE DIAMETER In. (mm)	INVERT OF RESTRICTOR TYPE	ELEVATION OF TOP OF PLATE OVERFLOW
105+25.0, 55.0' RT	6'	TIF CL	SHARP EDGED	7.375	661.38	664.55



RESTRICTOR TYPE					
1	2	3	4	5	6
RE-ENTRANT TUBE	SHARP EDGED	SQUARE EDGED	RE-ENTRANT TUBE	SQUARE EDGED	ROUNDED
LENGTH 1/2 TO 1 DIA.		STREAM CLEARS SIDES	LENGTH: 2-1/2 DIA.	LENGTH: 2-1/2 DIA.	
C=.52	C=.61	C=.61	C=.73	C=.82	C=.98

VALUES OF "C" FOR CIRCULAR AND SQUARE ORIFICES

ALL DIMENSIONS ARE IN INCHES (MILLIMETERS) UNLESS OTHERWISE SHOWN.

FILE NAME = W:\atstsd\22x34\bd12.dgn	USER NAME = ggliercbt	DESIGNED - R. SHAH	REVISED - R. SHAH 10-25-94	STATE OF ILLINOIS DEPARTMENT OF TRANSPORTATION	MANHOLE WITH RESTRICTOR PLATE	F.A.U. RTE. 3545	SECTION 09-00170-00-CH	COUNTY DUPAGE	TOTAL SHEETS 108	SHEET NO. 73
	PLOT SCALE = 5/8" = 1' IN.	DRAWN -	REVISED - E. GOMEZ 08-28-00		SCALE: NONE	SHEET NO. 1 OF 1 SHEETS	CONTRACT NO. 63742			
	PLOT DATE = 1/4/2000	CHECKED -	REVISED - M. GOMEZ 01-08-01		STA. TO STA.		FED. ROAD DIST. NO. 1 (ILLINOIS) FED. AID PROJECT			
		DATE - 09-09-94	REVISED -							