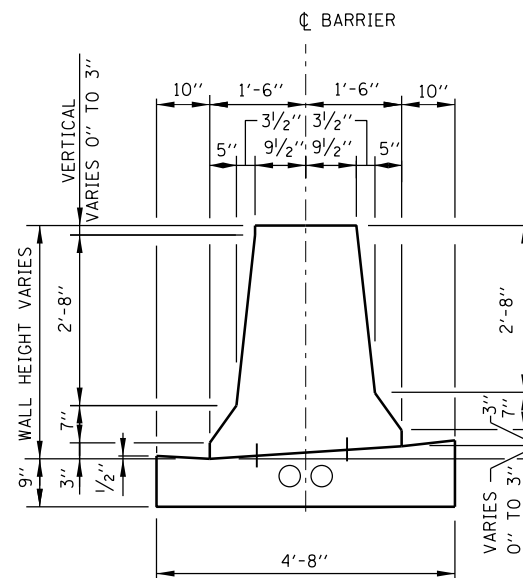
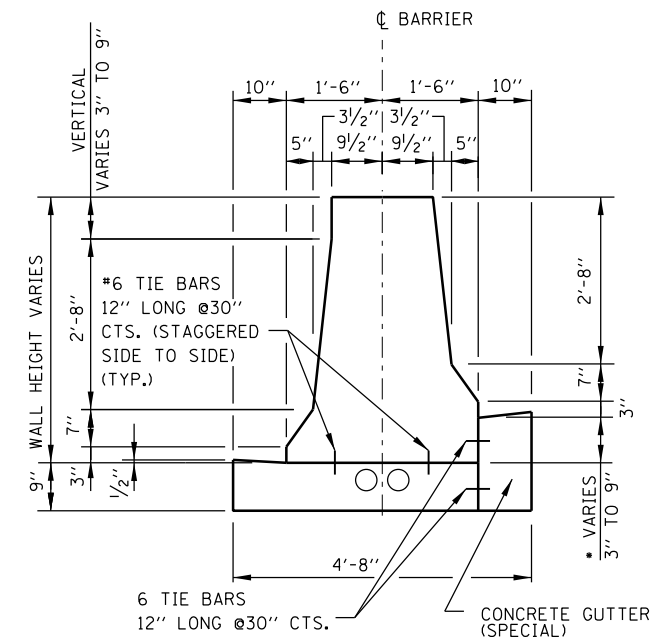


CONCRETE BARRIER, DOUBLE FACE, 42"
CONCRETE BARRIER BASE



DETAIL A



DETAIL B

* WHEN 6" OR GREATER ADD TOP TIE BAR.

CONCRETE BARRIER,
DOUBLE FACE, VARIABLE HEIGHT
CONCRETE BARRIER BASE, VARIABLE HEIGHT

NOTES:

- 1" DEEP CONTRACTION JOINTS SHALL BE CONSTRUCTED IN THE CONCRETE BARRIER WALL AND IN THE CONCRETE BARRIER BASE. CONTRACTION JOINTS SHALL ALSO BE CONSTRUCTED AT BOTH SIDES OF ALL DRAINAGE STRUCTURES. MAXIMUM JOINT SPACING SHALL BE 30'
- THE FORMING OF CONTRACTION JOINTS SHALL BE DONE WITH AN APPROVED FINISHING TOOL AT THE DISCRETION OF THE ENGINEER SUBJECT TO THE SATISFACTORY CONTROL OF CRACKING. THE SAWING OF CONTRACTION JOINTS IN THE CONCRETE BARRIER WALL SHALL NOT BE PERMITTED.
- GUTTER PROFILE IN THE VICINITY OF SAG VERTICAL CURVES, ALONG FLAT GRADES AND AT THE MEETING OF PROPOSED AND EXISTING GUTTER, SHALL BE CAREFULLY CONTROLLED AND FIELD ADJUSTED IF NECESSARY TO ENSURE POSITIVE DRAINAGE AND AVOID PONDING.
- IN AREAS OF RELATIVELY FLAT LONGITUDINAL PROFILE GRADES, THE 3" VERTICAL DIMENSION AT THE BOTTOM OF THE BARRIER CAN VARY FROM 2" TO 3 1/4" TO CREATE AN ACCEPTABLE LONGITUDINAL GRADE IN THE GUTTER.
- TIE BARS ARE INCIDENTAL TO THE VARIOUS BARRIER & GUTTER ITEMS AND SHALL BE EPOXY COATED.
- TWO CONDUITS SHALL BE INSTALLED IN THE BARRIER BASE WHETHER ELECTRICAL OR ITS ELEMENTS ARE INCLUDED FOR FUTURE USE.
- WHEN VARIABLE HEIGHT VERTICAL DIFFERENTIAL EXCEEDS 9" SEE CONSTRUCTION PLANS FOR DETAILS.

CONTRACT 60I31 SHEET 906 OF 963



APPROVED *Paul Kovacs* CHIEF ENGINEER DATE 2-7-2012

DATE	REVISIONS
2-7-2012	ADDED CONDUITS TO BARRIER BASE.

CONCRETE BARRIER BASE AND
CONCRETE BARRIER, DOUBLE FACE,
42" AND VARIABLE HEIGHT
STANDARD C5-01