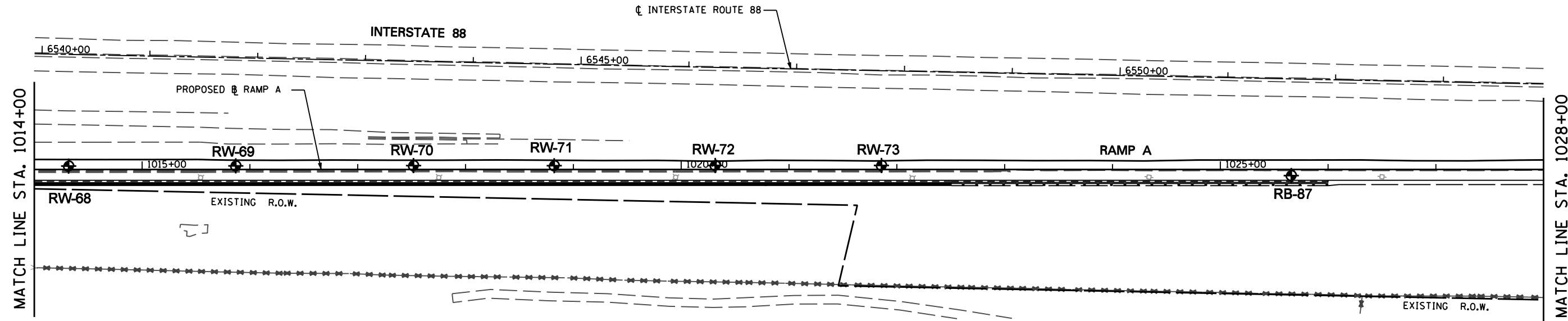
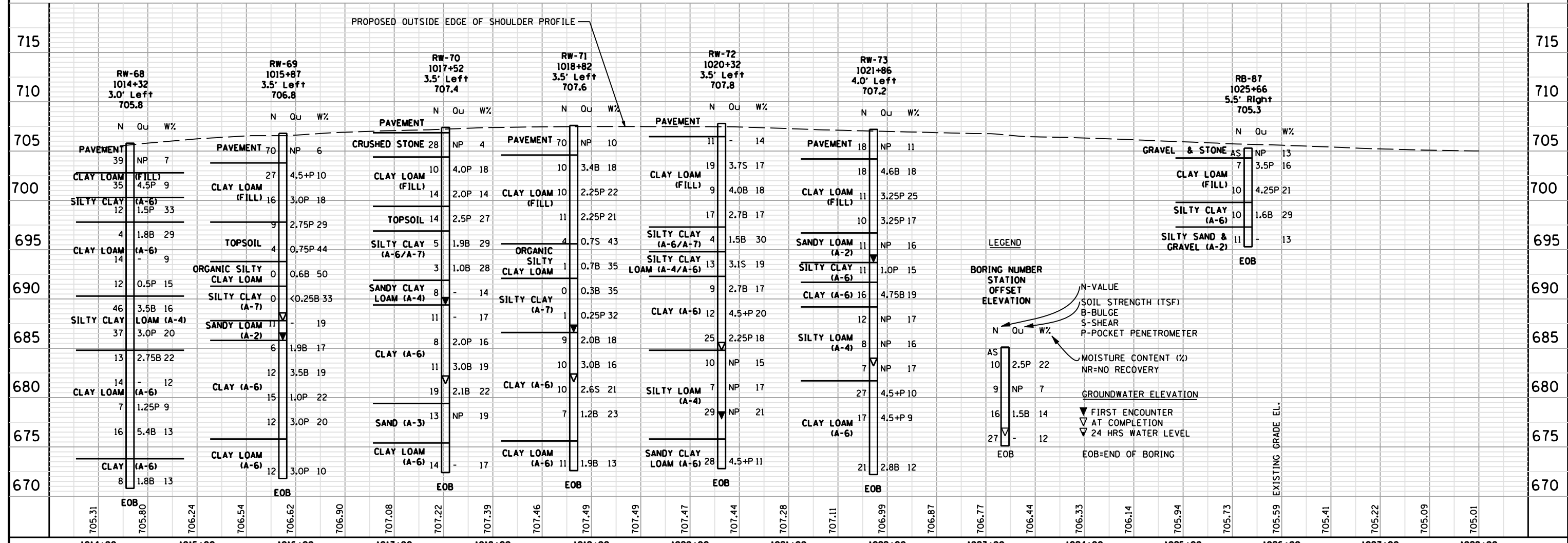




PLAN	SURVEYED	DATE
	PLOTTED	
	GRADES CHECKED	
	STRUCTURE NOTATIONS OK'D	
	NOTE BOOK NO.	
	FILE NAME	



PROFILE	SURVEYED	DATE
	PLOTTED	
	GRADES CHECKED	
	STRUCTURE NOTATIONS OK'D	
	NOTE BOOK NO.	
	FILE NAME	



1014+00	1015+00	1016+00	1017+00	1018+00	1019+00	1020+00	1021+00	1022+00	1023+00	1024+00	1025+00	1026+00	1027+00	1028+00		
Geo Services, Inc. Geotechnical, Environmental & Civil Engineering 805 Anthony Court, Suite 204 Naperville, Illinois 60565 (630) 355-2836												USER NAME : DESIGNED - RWC DRAWN - RWC CHECKED - AJP DATE - 5/17/2012	DESIGNED - RWC REVISED - 7/11/2012 REVISED - REVISED - REVISED -	STATE OF ILLINOIS DEPARTMENT OF TRANSPORTATION	SOIL BORING PLAN / PROFILE - RAMP A SCALE: AS SHOWN SHEET NO. 2 OF 3 SHEETS STA. 1014+00 TO STA. 1028+00	F.A.P. RTE. SECTION COUNTY TOTAL SHEETS SHEET NO. 338/IL 59 (112 & 113) WRS-5 DUPAGE 963 693 CONTRACT NO. 60131