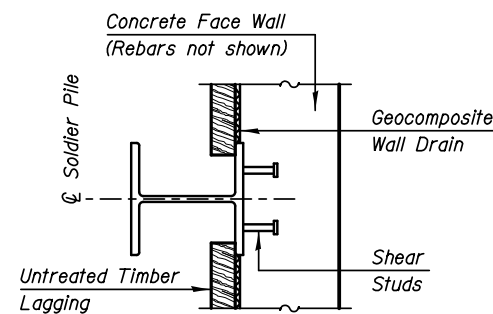
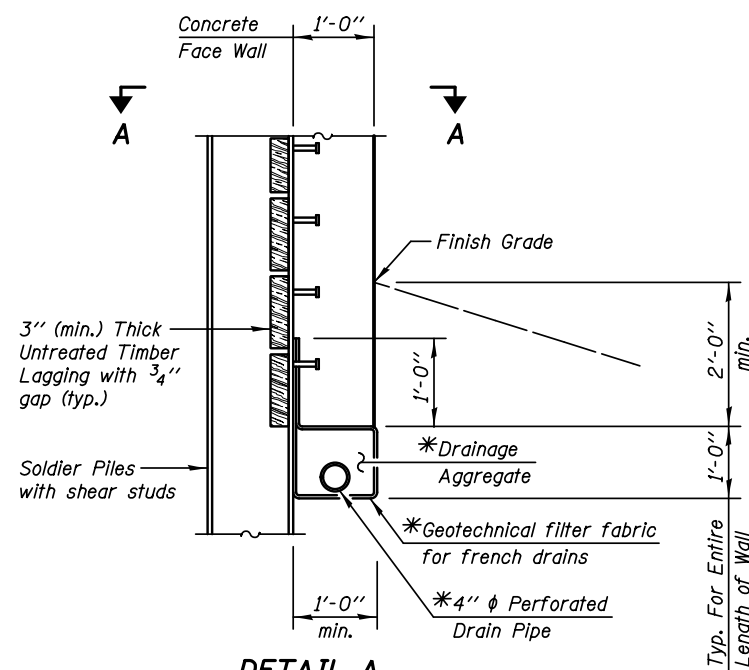


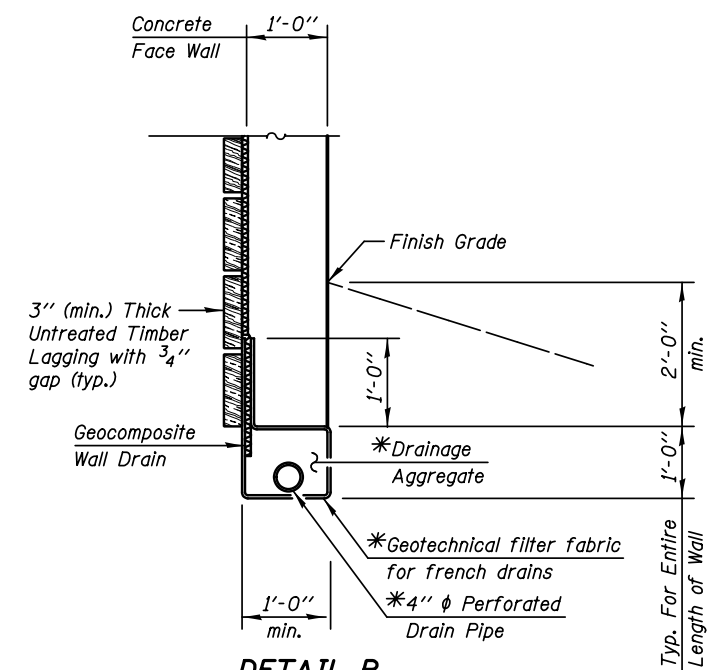
TYPICAL WALL SECTION
(For Details See Sheet SF-4)



SECTION A-A - PLAN



DETAIL A
(At Soldier Piles)



DETAIL B
(Between Soldier Piles)

GENERAL NOTES

All structural steel shall conform to the requirements of AASHTO M 270 Grade 50 except as noted on plans.

Reinforcement bars designated (E) shall be epoxy coated.

The Contractor is responsible for the design and performance of the timber lagging using no less than a 3 in. nominal rough-sawn thickness and timber with a minimum allowable bending stress of 1000 psi.

Concrete Sealer shall be applied to exposed surfaces of the front face, top face and back face of wall.

UNDERDRAIN DETAIL

*Cost Included with "Pipe Underdrains for Structures"

KNIGHT
Engineers & Architects

DESIGNED - TB	REVISION
CHECKED - WPM	REVISION
DRAWN - TB	REVISION
CHECKED - WPM	REVISION
SCALE - NONE	
DATE - 10/15/2012	

STATE OF ILLINOIS
DEPARTMENT OF TRANSPORTATION

TYPICAL WALL SECTION AND DETAILS
STRUCTURE NUMBER 022-W067 TOLLWAY WALL EW123.5R,EB(R)

SHEET NO. SF-2 OF 5 SHEETS

F.A.P. RTE.	SECTION	COUNTY	TOTAL SHEETS	SHEET NO.
338	(112 & 113) WRS-5	DUPAGE	963	685
CONTRACT NO. 60131				

ILLINOIS FED. AID PROJECT