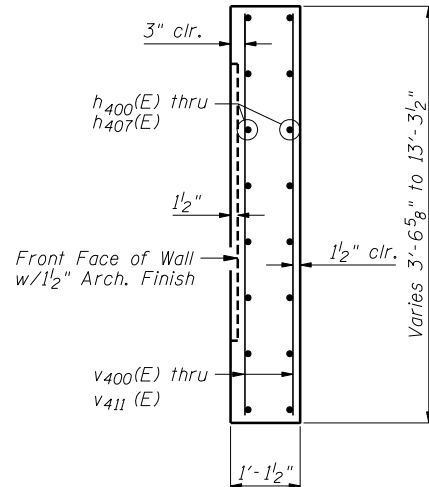
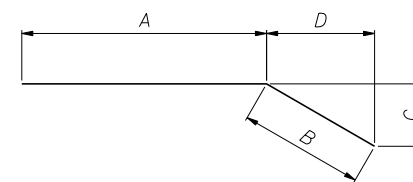


**CUTTING DIAGRAM**

Bar	A	B	C	D
V 400 (E)	4'-4"	5'-8"	10'-0"	16
V 401 (E)	5'-8"	8'-1"	13'-9"	26
V 402 (E)	8'-1"	10'-6"	18'-7"	26
V 403 (E)	10'-6"	13'-0"	23'-6"	27
V 404 (E)	13'-0"	11'-7"	24'-7"	27
V 405 (E)	11'-7"	10'-3"	21'-10"	27
V 406 (E)	10'-3"	9'-1"	19'-4"	27
V 407 (E)	9'-1"	7'-11"	17'-0"	27
V 408 (E)	7'-11"	6'-9"	14'-8"	27
V 409 (E)	6'-9"	5'-7"	12'-4"	27
V 410 (E)	5'-7"	4'-5"	10'-0"	27
V 411 (E)	4'-5"	3'-3"	7'-8"	27



**SECTION THRU CONCRETE FACING**



**h400(E), h401(E), h404(E) & h405(E) BARS**

**BAR BEND TABLE**

Bar	A	B	C	D
h400 (E)	14'-5"	3'-10"	1'-10"	3'-4"
h401 (E)	14'-8"	3'-10"	1'-10"	3'-4"
h404 (E)	25'-5"	3'-10"	2'-1"	3'-2 1/2"
h405 (E)	25'-8"	3'-10"	2'-1"	3'-2 1/2"

**BILL OF MATERIAL**

Bar	No.	Size	Length	Shape
h400 (E)	8	#5	18'-3"	—
h401 (E)	8	#5	18'-6"	—
h402 (E)	30	#5	29'-0"	—
h403 (E)	30	#5	24'-8"	—
h404 (E)	17	#5	29'-3"	—
h405 (E)	17	#5	29'-6"	—
h406 (E)	130	#5	30'-0"	—
h407 (E)	82	#5	26'-0"	—
V 400 (E)	30	#5	10'-0"	—
V 401 (E)	26	#5	13'-9"	—
V 402 (E)	26	#5	18'-7"	—
V 403 (E)	27	#5	23'-6"	—
V 404 (E)	27	#5	24'-7"	—
V 405 (E)	27	#5	21'-10"	—
V 406 (E)	27	#5	19'-4"	—
V 407 (E)	27	#5	17'-0"	—
V 408 (E)	27	#5	14'-8"	—
V 409 (E)	27	#5	12'-4"	—
V 410 (E)	27	#5	10'-0"	—
V 411 (E)	27	#5	7'-8"	—
Item			Unit	Quantity
Concrete Structures			Cu. Yd.	105.8
Reinforcement Bars, Epoxy Coated			Pound	14,760
Pipe Underdrains for Structures, 4"			Foot	601
Geocomposite Wall Drain			Sq. Yd.	137

**CONCRETE FACING DETAILS  
SN 022-W066**

FILE NAME = ...E0131-W066-008-ConFacingDetails.dgn



Zroka Engineering, P.C.  
4216 North Hermitage  
Chicago, IL 60613

USER NAME = SAW	DESIGNED - LAS	REVISED -
	CHECKED - DAZ	REVISED -
PLOT SCALE = 8.0000' / IN.	DRAWN - SAW	REVISED -
PLOT DATE = 10/9/2012	CHECKED - JLA	REVISED -

**STATE OF ILLINOIS  
DEPARTMENT OF TRANSPORTATION**

**CONCRETE FACING DETAILS  
STRUCTURE NUMBER 022-W066**

SHEET NO. SE-8 OF SE-11 SHEETS

F.A.P. RTE.	SECTION	COUNTY	TOTAL SHEETS	SHEET NO.
338/1L 59	(112 & 113) WRS-5	DUPAGE	963	680
			CONTRACT NO. 60131	
ILLINOIS FED. AID PROJECT				