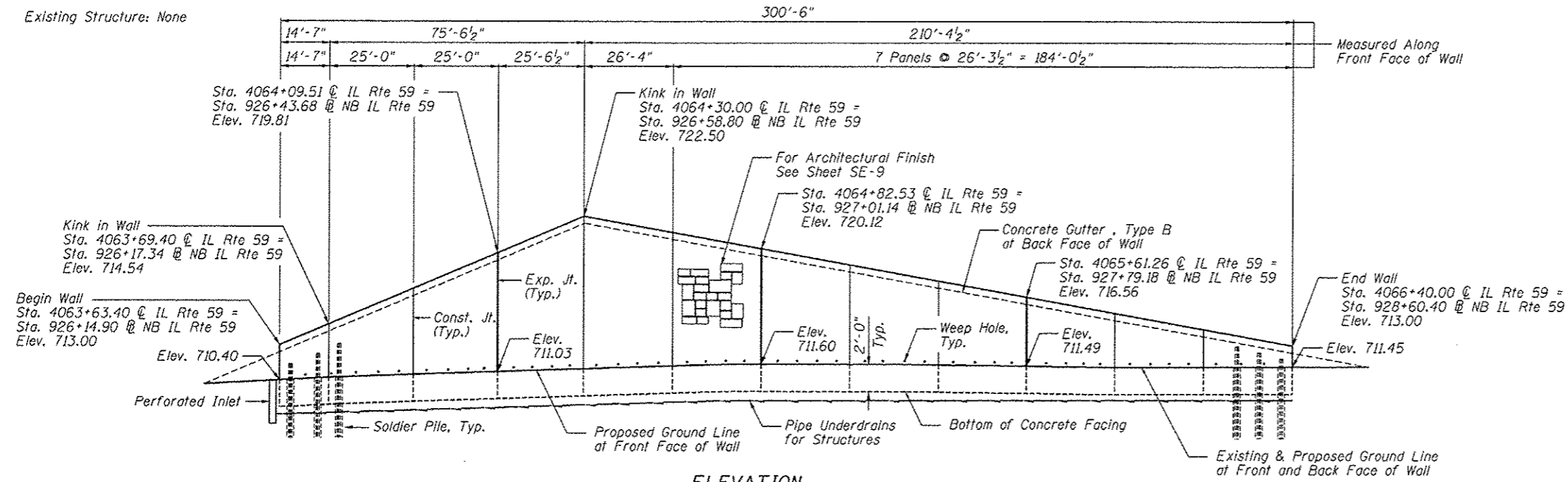
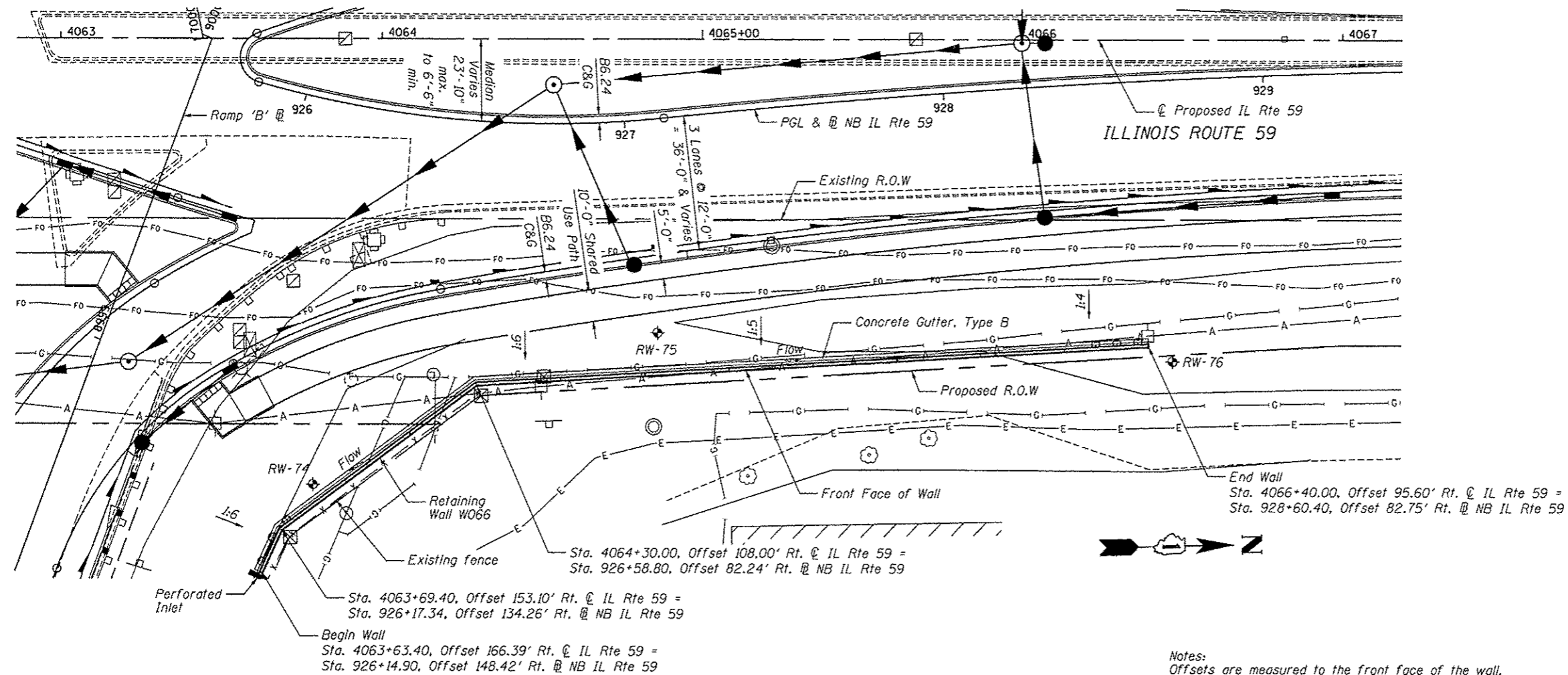


Bench Mark: DuPage County survey disk at north end of the west bridge wall,
IL Rte 59 over Interstate Route 88, Elev. 731.43

Existing Structure: None



ELEVATION



PLAN

Notes:
Offsets are measured to the front face of the wall.

Existing utilities including gas, fiber optic and electric aerial lines to be adjusted or relocated as required.

INDEX OF SHEETS

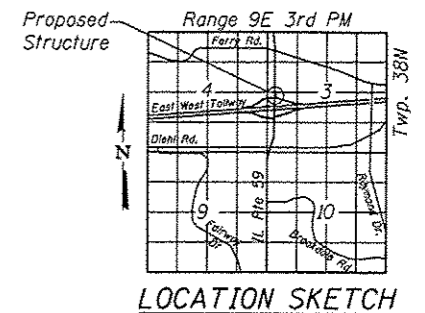
- SE-1. General Plan
- SE-2. General Notes & Bill of Material
- SE-3. Soldier Pile Layout
- SE-4. Typical Section
- SE-5. Details
- SE-6. Concrete Facing 1
- SE-7. Concrete Facing 2
- SE-8. Concrete Facing Details
- SE-9. Pile Splice Details
- SE-10. Architectural Finish Details
- SE-11. Boring Logs



Signature: *D. Carl Perry* Date: 10-15-12
November 30, 2014 Expires

APPROVED
For Structural Adequacy Only

D. Carl Perry
Engineer of Bridges & Structures



GENERAL PLAN
IL RTE 59 FAP RTE 338
SECTION (112 & 113) WRS-5

DUPAGE COUNTY
STA. 4063+63.40 TO STA. 4066+40.00
SN 022-W066



Zroka Engineering, P.C.
4216 North Hermitage
Chicago, IL 60613

USER NAME = #USER#	DESIGNED - LAS	REVISED
PLBT SCALE = #SCALE#	CHECKED - DAZ	REVISED
DATE = 10/15/2012	DRAWN - SAW	REVISED
	CHECKED - JLA	REVISED

STATE OF ILLINOIS
DEPARTMENT OF TRANSPORTATION

GENERAL PLAN
STRUCTURE NUMBER 022-W066

SHEET NO. SE-1 OF SE-11 SHEETS

F.A.P. RTE.	SECTION	COUNTY	TOTAL SHEETS	SHEET NO.
338/IL 59	(112 & 113) WRS-5	DUPAGE	963	673
CONTRACT NO. 60131			ILLINOIS FED. AID PROJECT	