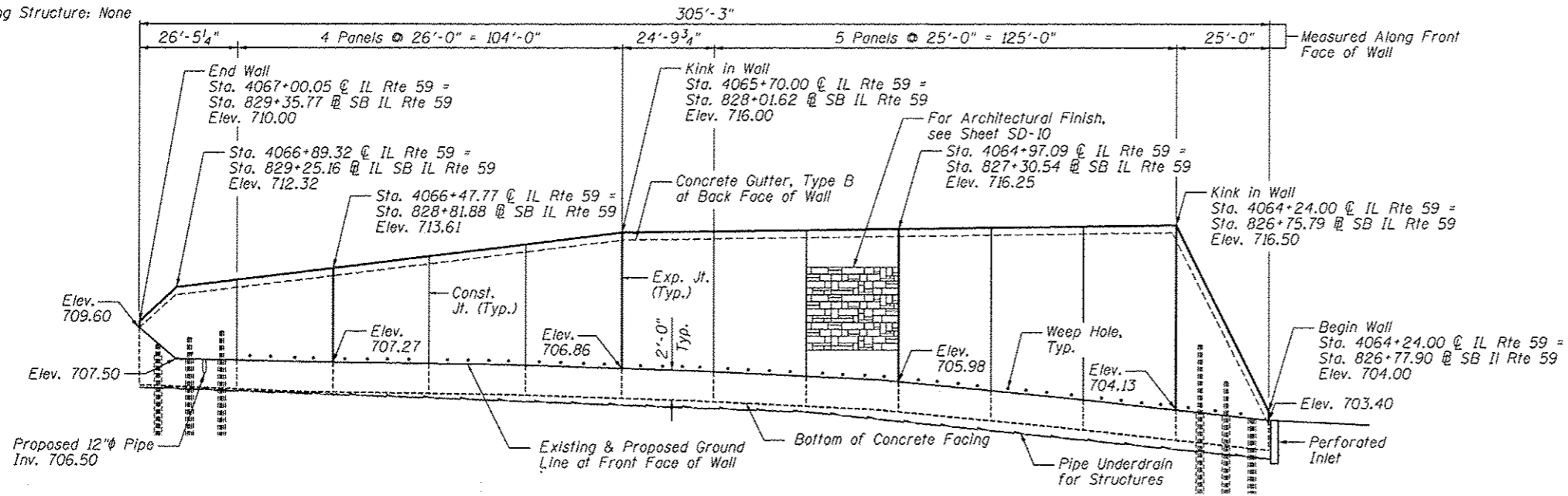


Bench Mark: DuPage County survey disk at north end of the west bridge wall,
IL Rte 59 over Interstate Route 88, Elev. 731.43

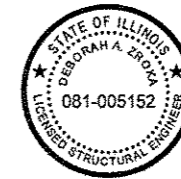
Existing Structure: None



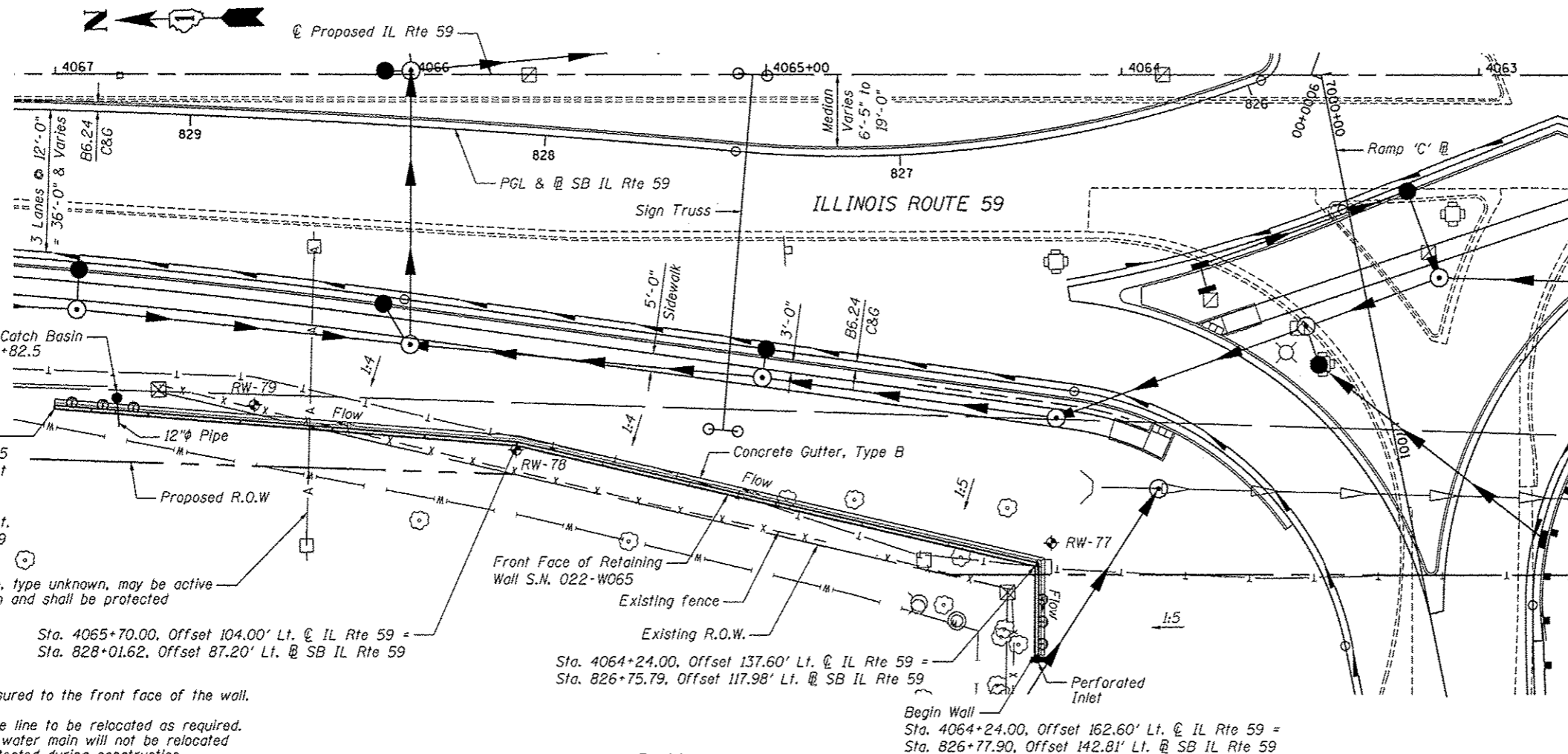
ELEVATION

INDEX OF SHEETS

- SD-1. General Plan
- SD-2. General Notes & Bill of Material
- SD-3. Soldier Pile Layout
- SD-4. Typical Section
- SD-5. Details
- SD-6. Concrete Facing 1
- SD-7. Concrete Facing 2
- SD-8. Concrete Facing & Details
- SD-9. Pile Splice Details
- SD-10. Architectural Finish Details
- SD-11. Boring Logs



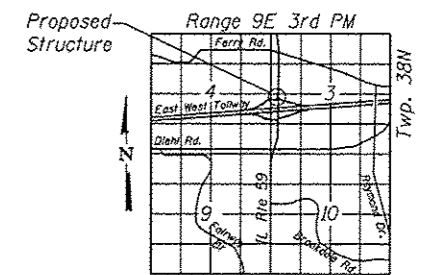
P. Cal Purney 10-13-12
Signature Date
November 30, 2014
Expires



PLAN

APPROVED
For Structural Adequacy Only

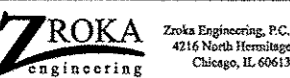
P. Cal Purney Esq.
Engineer of Bridges & Structures



LOCATION SKETCH

GENERAL PLAN
IL RTE 59 FAP RTE 338
SECTION (112 & 113) WRS-5
DUPAGE COUNTY

STA. 4064+24.00 TO STA. 4067+00.05
SN 022-W065



USER NAME = #USER#	DESIGNED - LAS	REVISED
CHECKED - DAZ	REVISED	
DRAWN - SAW	REVISED	
CHECKED - JLA	REVISED	
DATE = 10/15/2012		

STATE OF ILLINOIS
DEPARTMENT OF TRANSPORTATION

GENERAL PLAN
STRUCTURE NUMBER 022-W065

SHEET NO. SD-1 OF SD-11 SHEETS

F.A.P. RTE.	SECTION	COUNTY	TOTAL SHEETS	SHEET NO.
338/IL 59	(112 & 113) WRS-5	DUPAGE	963	662
			CONTRACT NO. 60131	

ILLINOIS FED. AID PROJECT