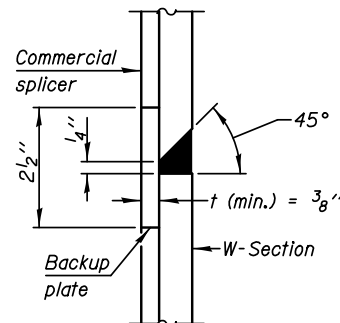
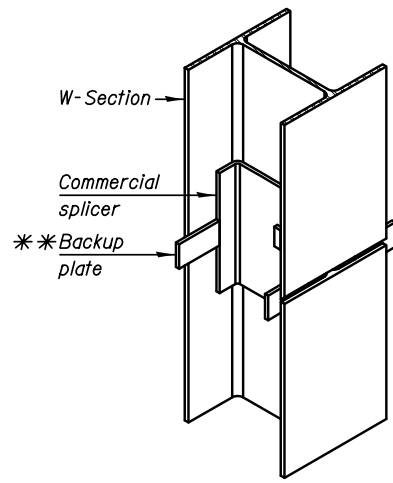


**ELEVATION**

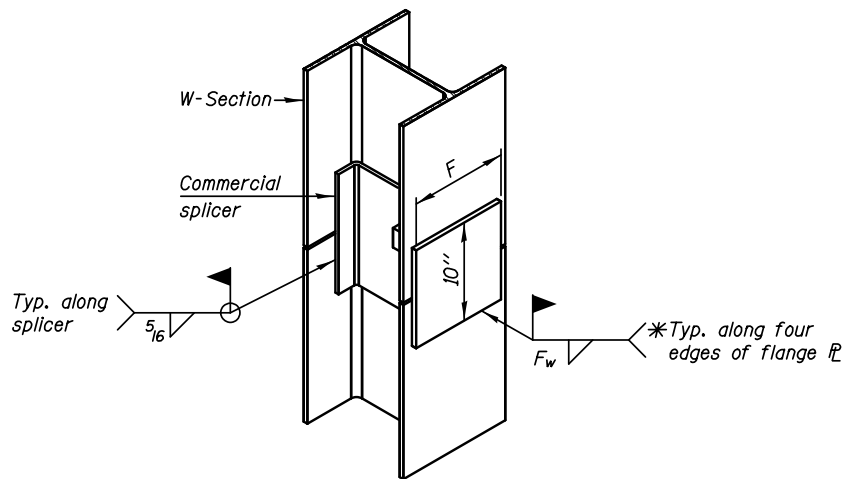


**DETAIL B**



**ISOMETRIC VIEW**

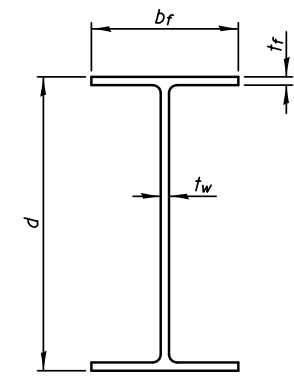
**WELDED COMMERCIAL SPLICE**



**ISOMETRIC VIEW**

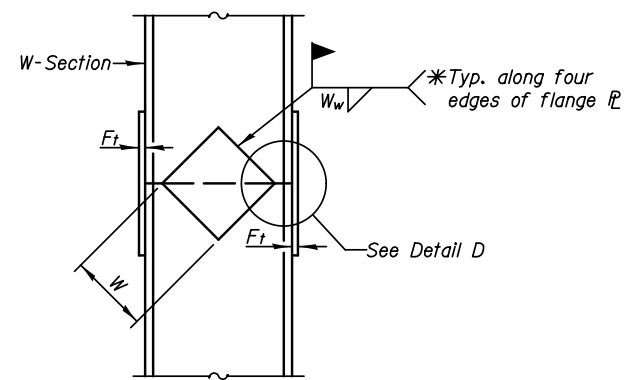
**WELDED COMMERCIAL SPLICE ALTERNATE**

- \* Interrupt welds 1/4" from end of web and/or each flange.
- \*\* Remove portions of backup plates that extend outside the flanges.
- \*\*\* Weld size per pile shoe manufacturer (5/16" min.).

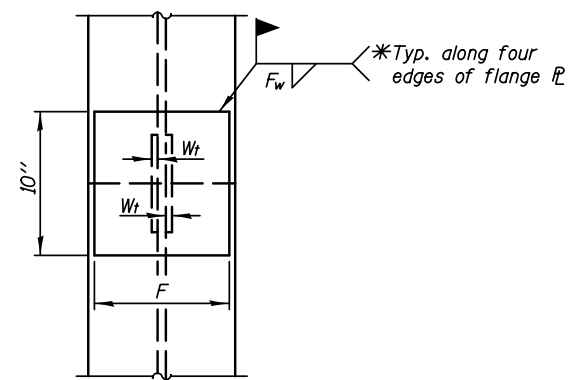


**STEEL PILE**

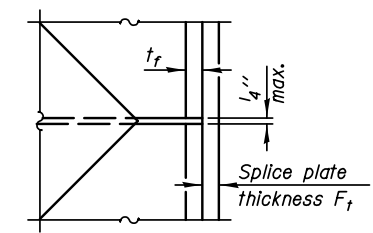
Designation	Depth d	Flange width b <sub>f</sub>	Flange thickness t <sub>f</sub>	Web thickness t <sub>w</sub>	Encasement diameter A
HP 14x73	13 <sup>5</sup> / <sub>8</sub> "	14 <sup>5</sup> / <sub>8</sub> "	1/2"	1/2"	30"
W24x68	23 <sup>3</sup> / <sub>4</sub> "	9"	9/16"	7/16"	36"
x117	24 <sup>1</sup> / <sub>4</sub> "	12 <sup>3</sup> / <sub>4</sub> "	7/8"	9/16"	36"



**ELEVATION**



**END VIEW**



**DETAIL D**

Designation	F	F <sub>t</sub>	F <sub>w</sub>	W	W <sub>t</sub>	W <sub>w</sub>
HP 14x73	12 <sup>1</sup> / <sub>2</sub> "	5 <sup>5</sup> / <sub>8</sub> "	9/16"	7 <sup>3</sup> / <sub>4</sub> "	5 <sup>5</sup> / <sub>8</sub> "	1/2"
W24x68	8"	3 <sup>3</sup> / <sub>4</sub> "	9/16"	15"	1/2"	3/8"
x117	10"	1 <sup>1</sup> / <sub>8</sub> "	15/16"	15"	1/2"	3/8"

**WELDED PLATE FIELD SPLICE**

**Notes:**  
The steel W-Section shall be according to AASHTO M270 Grade 50.