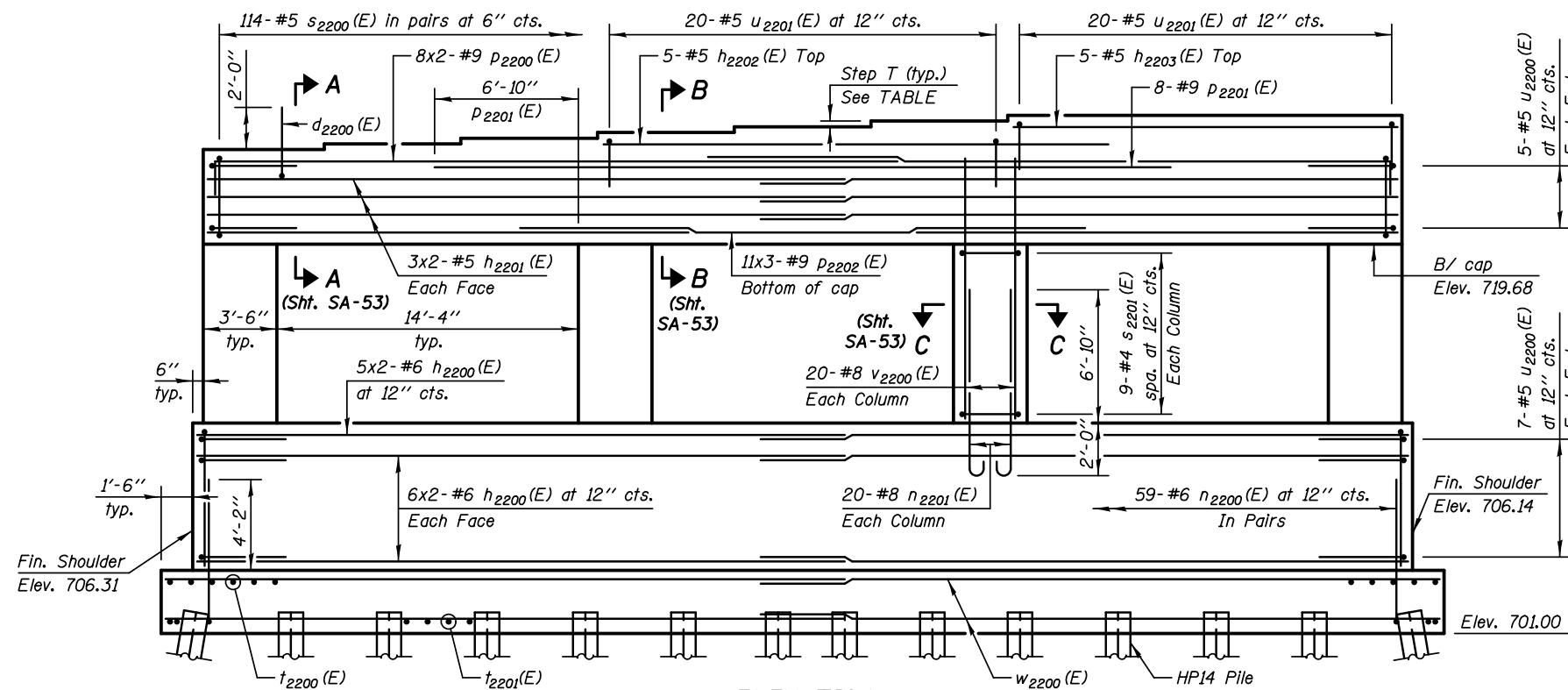
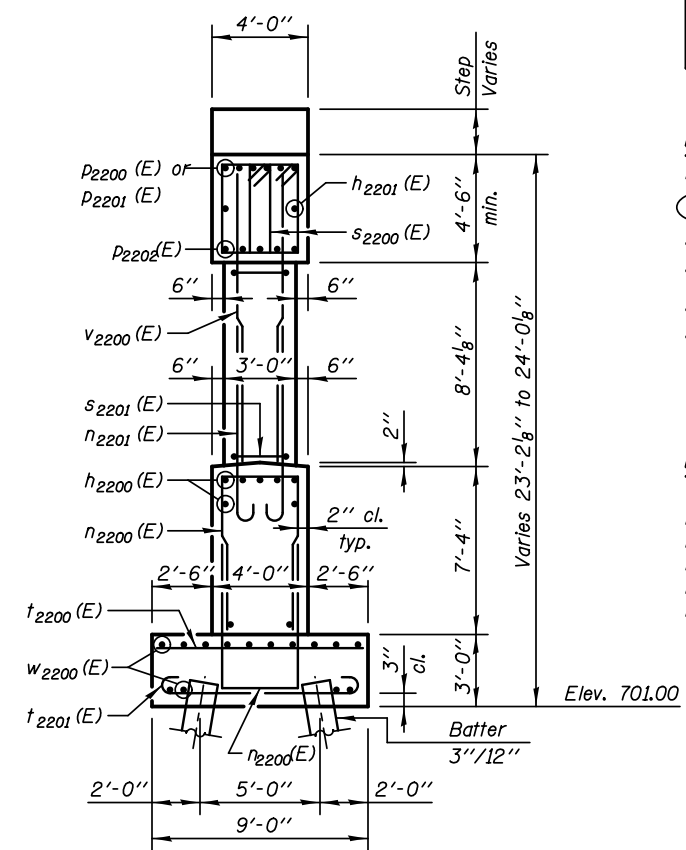


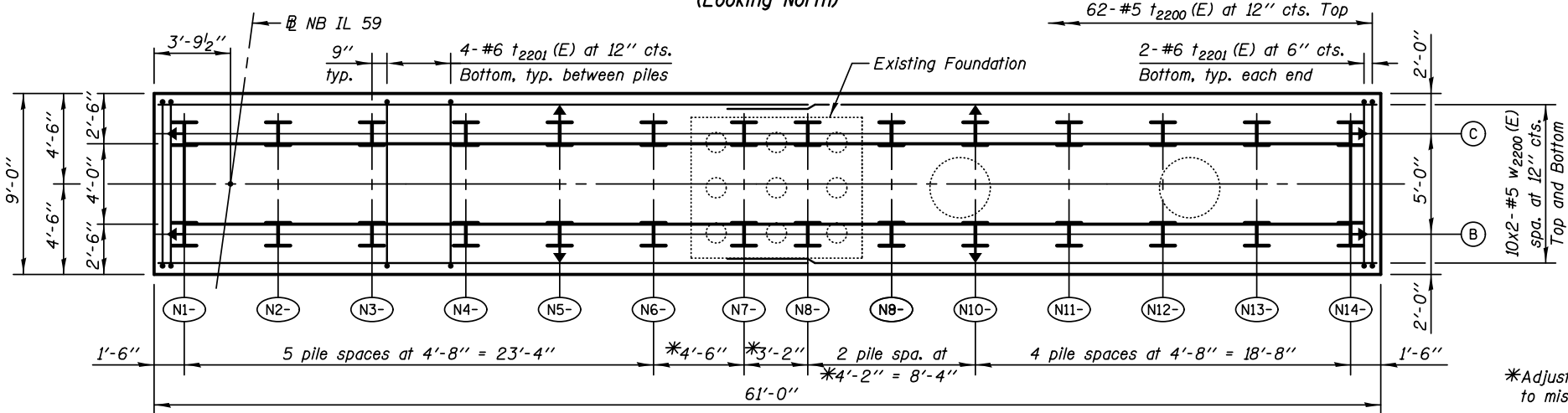
TOP PLAN



ELEVATION
(Looking North)



END VIEW



FOOTING PLAN

BEARING SEAT ELEVATIONS

BEAM	BRG. SEAT ELEVATION	STEP T- inch
1	724.18	
2	724.32	1 5/8"
3	724.45	1 5/8"
4	724.59	1 5/8"
5	724.73	1 3/4"
6	724.87	1 5/8"
7	725.01	1 3/4"
8	725.01	
9	725.01	

LEGEND

- E.F. Each Face
- (NIB) Pile Number
- Vertical Pile
- Battered Pile

PILE DATA

Type & Size: Steel HP 14x73
 Nominal Required Bearing: 504 Kips
 Factored Resistance Available: 277 Kips
 Est. Length: 58 ft
 No. Production Piles: 27
 No. Test Piles: 1

NOTES

- Four steps monolithically with cap.
- Bars indicated thus 20x3-#15 indicates 20 lines of bars with 3 lengths per line.
- See Sheet SA-04 for additional Pile Layout details.
- See Sheet SA-53 for Section A-A, B-B & C-C, details and Bill of Material.

MIN. BAR LAP

Vertical Bars #5 - 2'-7"
 Horizontal Bars #5 - 2'-11"
 #7 - 4'-8"

*Adjust pile spacing, as required, to miss existing piles.

KNIGHT
 Engineers & Architects

DESIGNED - WPM	REVISIONS
CHECKED - TB	REVISIONS
DRAWN - TB	REVISIONS
CHECKED - WPM	REVISIONS

STATE OF ILLINOIS
DEPARTMENT OF TRANSPORTATION

PIER (NB)
 S.N. 022-2029 (SB) TOLLWAY B.N. 826
 S.N. 022-2030 (NB) TOLLWAY B.N. 825

F.A.P. RTE.	SECTION	COUNTY	TOTAL SHEETS	SHEET NO.
338	(112 & 113) WRS-5	DUPAGE	963	636
CONTRACT NO. 60131				

SHEET NO. SA-52 OF 63 SHEETS

ILLINOIS FED. AID PROJECT