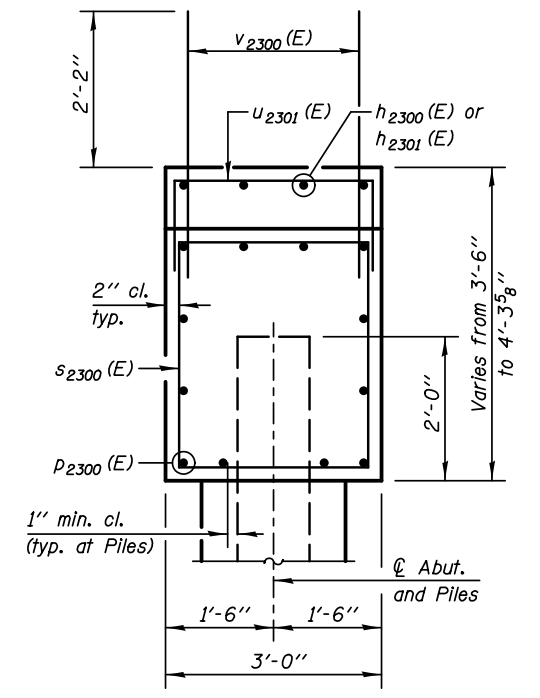
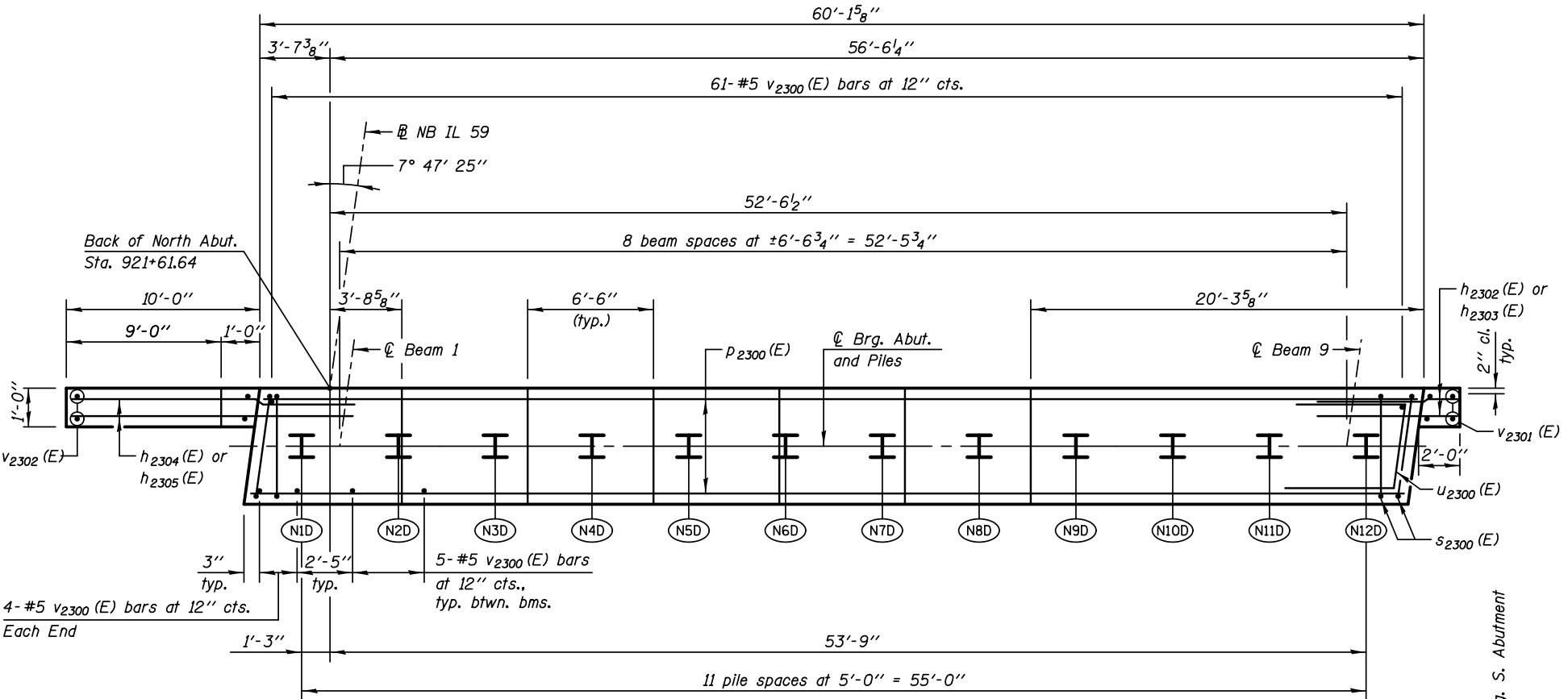


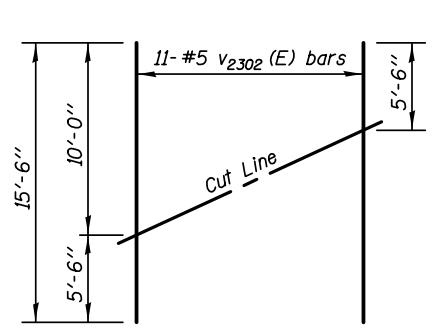
**ELEVATION**  
(Looking North)



**SEC. THRU ABUT.**



**PLAN - NORTH ABUTMENT**  
(NB Bridge)

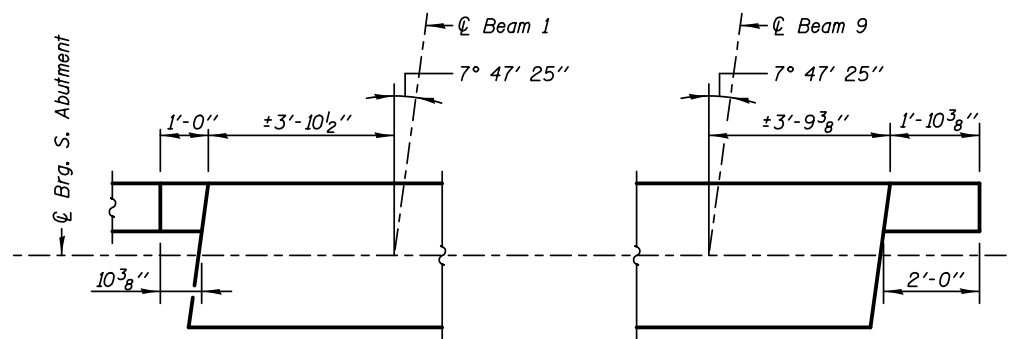


**FIELD CUTTING DIAGRAM**

Order v2302 (E) full length. Cut as shown and use remainder of bars in opposite face.

**BEARING SEAT ELEVATIONS**

BEAM	BRG. SEAT ELEVATION	STEP T- inch
1	724.43	1 1/2"
2	724.56	1 5/8"
3	724.69	1 5/8"
4	724.83	1 5/8"
5	724.96	1 5/8"
6	725.10	1 5/8"
7	725.23	1 5/8"
8	725.23	
9	725.23	



**ABUTMENT CORNER DETAILS**

**PILE DATA**

Type & Size: Steel HP 14x73  
Nominal Required Bearing: 567 Kips  
Factored Resistance Available: 312 Kips  
Est. Length: 65 ft  
No. Production Piles: 11  
No. Test Piles: 1

**NOTES**

Pour steps monolithically with cap.  
Bars indicated thus 20x3-#15 indicates 20 lines of bars with 3 lengths per line.  
See Sheet SA-04 for additional Pile Layout details.  
See Sheet SA-48 for details and Bill of Material.

See Sheet SA-50 for Chain Link Fence post spacing.  
See Roadway Plans for additional Chain Link Fence details.

**LEGEND**

E.F. Each Face  
N1D Pile Number

**MIN. BAR LAP**

Vertical Bars #5 - 2'-7"  
Horizontal Bars #5 - 2'-11"  
#7 - 4'-8"

**KNIGHT**  
Engineers & Architects

DESIGNED - WPM	REVISIONS
CHECKED - TB	REVISIONS
DRAWN - TB	REVISIONS
CHECKED - WPM	REVISIONS

STATE OF ILLINOIS  
DEPARTMENT OF TRANSPORTATION

**NORTH ABUTMENT (NB)**  
S.N. 022-2029 (SB) TOLLWAY B.N. 826  
S.N. 022-2030 (NB) TOLLWAY B.N. 825  
SHEET NO. SA-47 OF 63 SHEETS

F.A.P. RTE.	SECTION	COUNTY	TOTAL SHEETS	SHEET NO.
338	(112 & 113) WRS-5	DUPAGE	963	631
CONTRACT NO. 60131				
ILLINOIS FED. AID PROJECT				