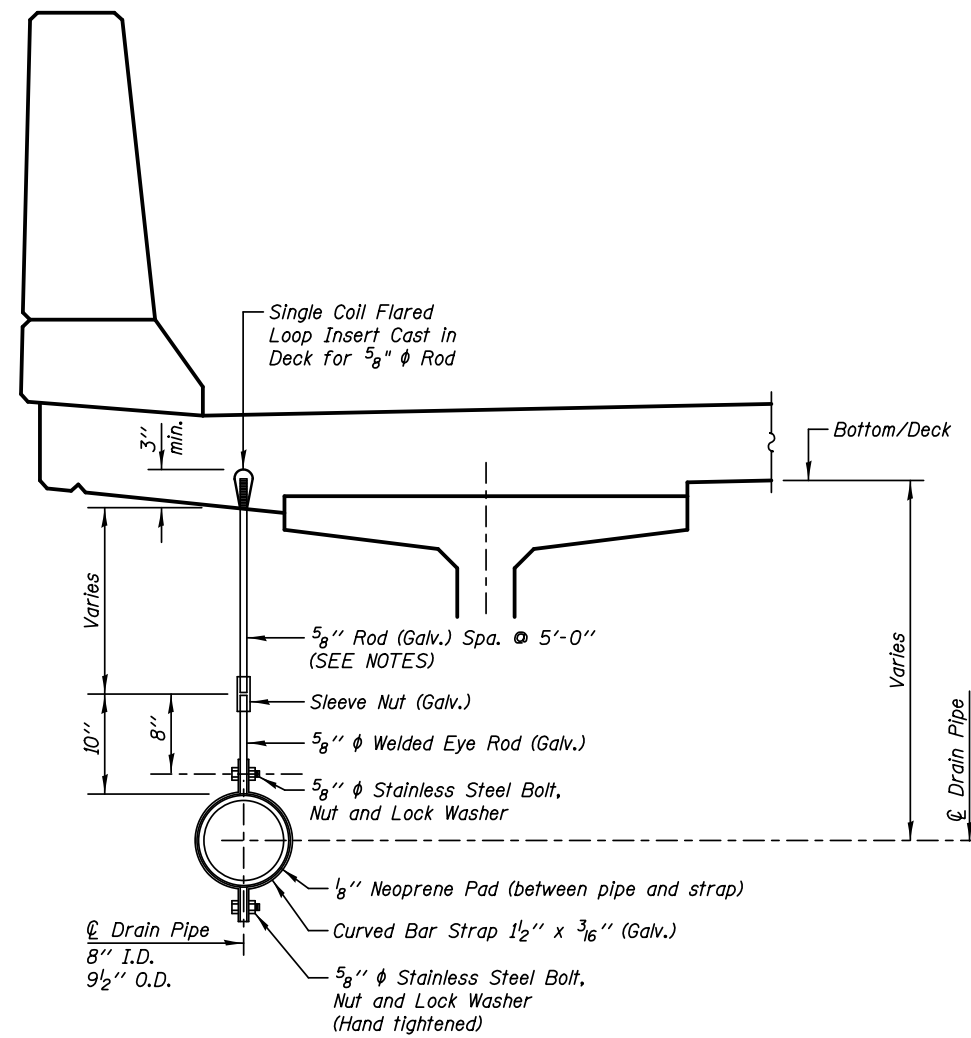


DECK DRAINAGE SYSTEM

SB Bridge shown (Drainage System, No. 1)
 NB Bridge opposite hand (Drainage System, No. 2)



**LONGITUDINAL PIPE
 SUPPORT DETAIL**

NOTES

See Sheet SA-20 and SA-25 for Drainage Scupper spacing.

All Pipe Hangers, Supports and Hardware shall be hot-dipped galvanized in accordance with AASHTO M232 (ASTM A153). All bolts, nuts and washers shall be stainless steel.

Pipe hangers shall be provided on all horizontal pipes at each tee, elbow or change in direction and at intermediate points as specified by the manufacturer, but not to exceed 5'-0" on centers. Pipe hangers shall have a load capacity of not less than 500 lbs.

The Deck Drainage System for the SB Bridge (022-2029) will be paid for as Drainage System, No. 1.

The Deck Drainage System for the NB Bridge (022-2030) will be paid for as Drainage System, No. 2.

BILL OF MATERIAL

| Item | Unit | Quantity |
|------------------------|------|----------|
| Drainage System, No. 1 | Each | 1 |
| Drainage System, No. 2 | Each | 1 |