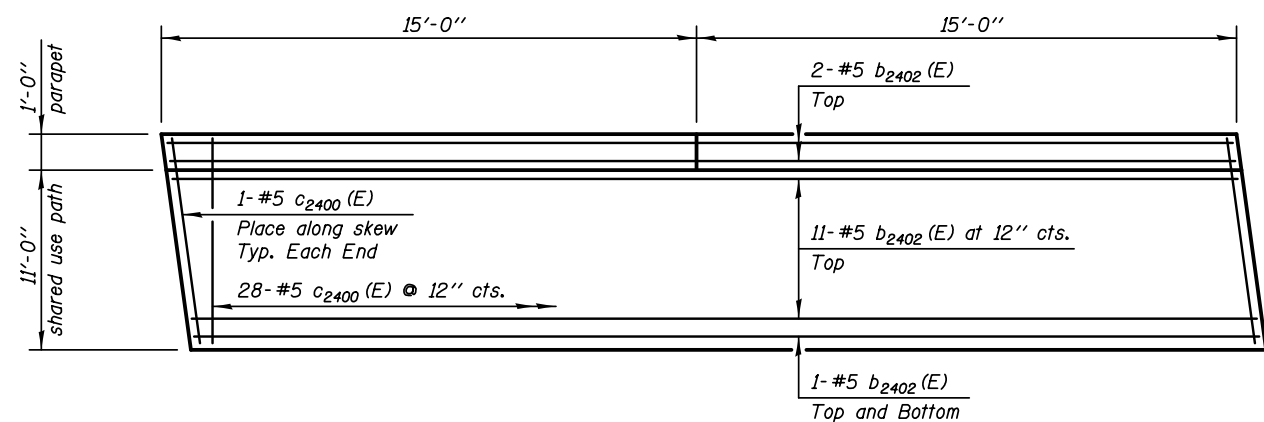
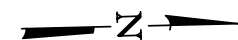


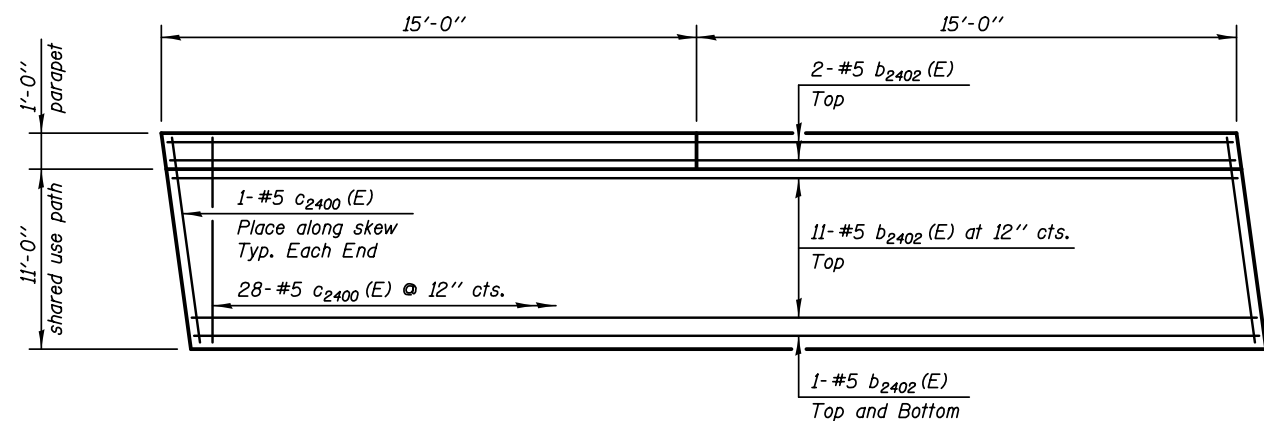
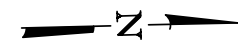
VIEW F-F

Dimensions along roadway face of parapet
South Approach parapet shown, North Approach parapet opposite hand



SHARED USE PATH - PARTIAL PLAN

South Approach Slab (SB)



SHARED USE PATH - PARTIAL PLAN

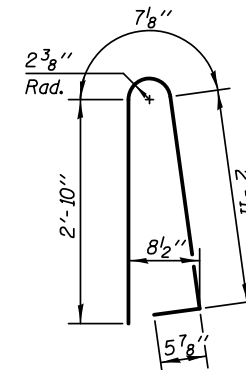
North Approach Slab (SB)

**BILL OF MATERIAL
SOUTH APPROACH SLAB**

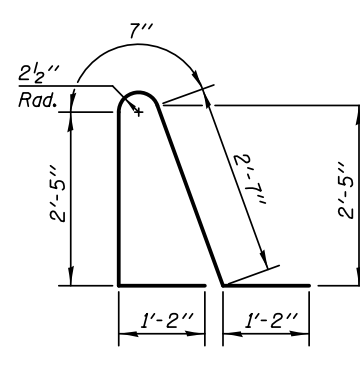
BAR	NO.	SIZE	LENGTH	SHAPE
a2400(E)	50	#4	31'-3"	—
a2401(E)	92	#5	31'-9"	—
a2402(E)	24	#6	6'-6"	—
b2400(E)	48	#4	29'-8"	—
b2401(E)	141	#9	29'-9"	U
b2402(E)	15	#5	29'-7"	—
c2400(E)	30	#5	11'-8"	—
d2400(E)	34	#5	6'-10"	⌋
d2401(E)	34	#5	7'-11"	⌋
d2402(E)	68	#5	4'-10"	⌋
d2403(E)	8	#4	2'-2"	⌋
d2404(E)	4	#6	4'-4"	⌋
e2400(E)	26	#4	14'-8"	—
e2401(E)	1	#8	29'-8"	—
e2402(E)	1	#4	29'-8"	—
f2400(E)	120	#4	9'-9"	—
w2400(E)	80	#5	31'-9"	—
Reinforcement Bars, Epoxy Coated			LB	25060
Concrete Superstructure			Cu. Yd.	115.0
Concrete Structures			Cu. Yd.	20.0
Bridge Deck Grooving			Sq. Yd.	147.0
Protective Coat			Sq. Yd.	226.0

**BILL OF MATERIAL
NORTH APPROACH SLAB**

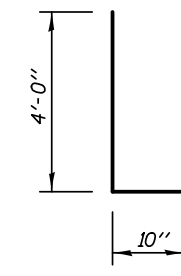
BAR	NO.	SIZE	LENGTH	SHAPE
a2400(E)	50	#4	31'-3"	—
a2401(E)	92	#5	31'-9"	—
a2402(E)	24	#6	6'-6"	—
b2400(E)	48	#4	29'-8"	—
b2401(E)	141	#9	29'-9"	U
b2402(E)	15	#5	29'-7"	—
c2400(E)	30	#5	11'-8"	—
d2400(E)	34	#5	6'-10"	⌋
d2401(E)	34	#5	7'-11"	⌋
d2402(E)	68	#5	4'-10"	⌋
d2403(E)	8	#4	2'-2"	⌋
d2404(E)	4	#6	4'-4"	⌋
e2400(E)	26	#4	14'-8"	—
e2401(E)	1	#8	29'-8"	—
e2402(E)	1	#4	29'-8"	—
f2400(E)	120	#4	9'-9"	—
w2400(E)	80	#5	31'-9"	—
Reinforcement Bars, Epoxy Coated			LB	25060
Concrete Superstructure			Cu. Yd.	115.0
Concrete Structures			Cu. Yd.	20.0
Bridge Deck Grooving			Sq. Yd.	147.0
Protective Coat			Sq. Yd.	226.0



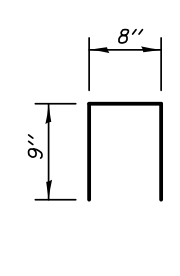
BAR d₂₄₀₀(E)



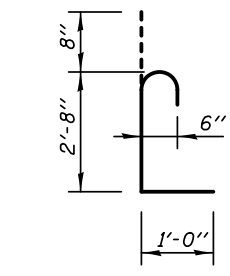
BAR d₂₄₀₁(E)



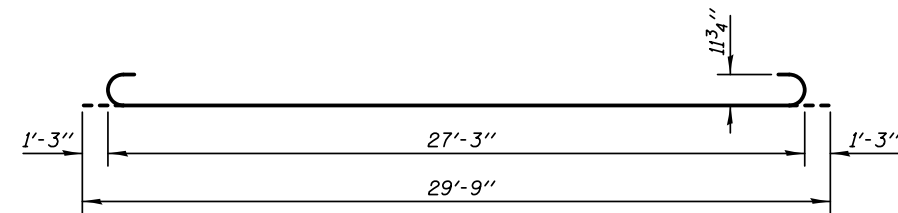
BAR d₂₄₀₂(E)



BAR d₂₄₀₃(E)



BAR d₂₄₀₄(E)



BAR b₂₄₀₁(E)

Notes:

Approach slab and parapet concrete shall be paid for as Concrete Superstructure.

Approach footing concrete shall be paid for as Concrete Structures.

Reinforcement shall be paid for as Reinforcement Bars, Epoxy Coated.

Cost of excavation for approach footing included with Concrete Structures.

See Sheet SA-26 for additional shared use path and parapet details.

See Sheet SA-29 for Parapet Joint Details.