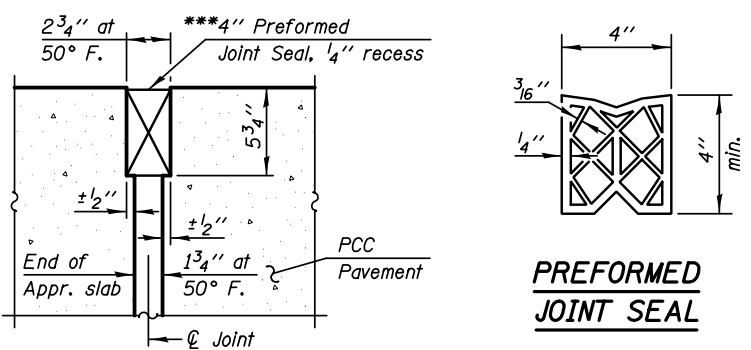
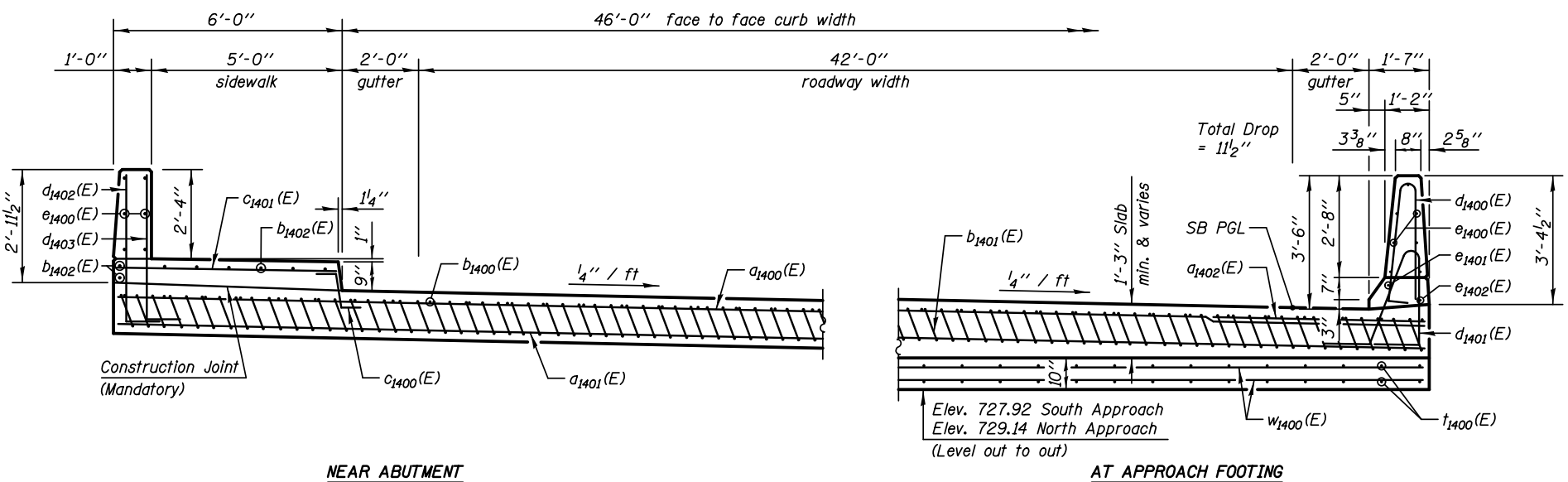


SECTION C-C



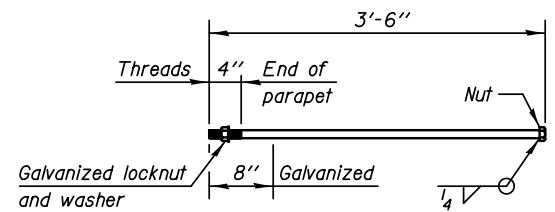
PREFORMED JOINT SEAL

*Tilt #9 b1401(E) bars as required to maintain clearance.
 ***Cost included with Concrete Superstructure.

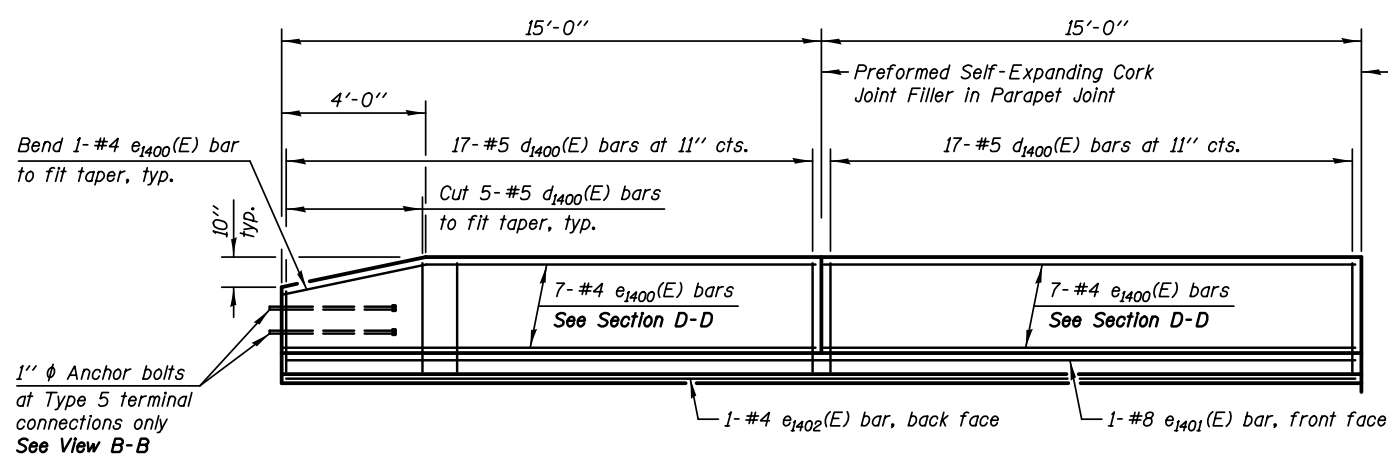


SECTION D-D

(See Plan for dimensions not shown)

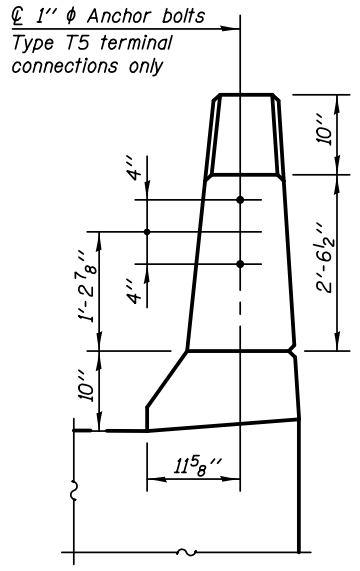


1" ANCHOR BOLT
 (Cost included with Concrete Superstructure)



VIEW E-E

Dimensions along inside face of parapet
 North Approach parapet shown, South Approach parapet opposite hand



VIEW B-B

Notes:
 The approach footing maximum applied service bearing pressure (Q_{max}) = 2.0 ksf.
 See Sheet SA-24 for v1000(E) bar details
 See Sheet SA-55 for bar splicer details.
 See Sheet SA-03 for Granular Backfill for Structures and drainage treatment details.
 See Sheet SA-22 for Parapet Joint Details and additional parapet details.

DESIGNED - WPM	REVISIONS
CHECKED - TB	REVISIONS
SCALE - NONE	REVISIONS
DATE - 10/15/2012	REVISIONS

F.A.P. RTE.	SECTION	COUNTY	TOTAL SHEETS	SHEET NO.
338	(112 & 113) WRS-5	DUPAGE	963	615
CONTRACT NO. 60131				